

---

# ROAD SAFETY OUTCOMES

Supplement to the NZ Transport Agency's  
*Quarterly results and insights*

---

1 July to 30 September 2015

**Q1** 2015/16



## This quarterly summary of road safety outcomes shows:

- an overall picture of fatal and serious casualties in road crashes over the past five years
- a set of intermediate outcome measures for each of the *Safer Journeys* areas of concern, **by financial year**
- the trend in a representative headline measure over the past five years for each of the *Safer Journeys* areas of concern
- trends in eight of the high and medium priority *Safer Journeys* areas of concern over the past five years in each Transport Agency Region
- Local Government Region and Police District comparisons against a representative headline outcome measure for each of the *Safer Journeys* areas of concern.

Outcome measures are provided for the most recently available quarter, to September 2015 in some cases but usually to June 2015. Some measures are only available on an annual basis.

A new measure has been included (page 7) to show the number of overseas-licensed drivers who are involved in fatal and serious injury crashes each year.

In some cases, the national outcome measures are not available at Regional or Police District level, and alternative headline measures are presented in the relevant charts. In the Regional and Police District charts, some measures are shown on an averaged three-yearly basis where the numbers are too small to give meaningful single year comparisons.

---

Cover picture: From 1 December the drink-driving limit for drivers over the age of 20 years was lowered to 250 micrograms of alcohol per litre of breath or 50 milligrams of alcohol per 100 millilitres of blood. To support the change, the latest instalment of the drink-driving advertising campaign reminds ordinary people who may have driven for years believing they're 'safe to drive' after a few drinks, that a lower limit is in place. The advertising aims to encourage these drivers to reassess their personal drinking limits if they are driving, and to think twice about the risk of getting caught now.

## Key results for the quarter

- fatality numbers continue to increase, and with **326 killed in the 12 months to September** the annual total has reached the highest level in the past 5 years
- the trend in alcohol- and drug-related deaths and serious injuries is decreasing, and is on track to achieve the 2016 indicator for Safe Use (page 8)
- regionally, young driver casualties have been increasing in the NZTA **Auckland/Northland** and **Central** regions, and decreasing elsewhere
- fatal/serious crashes with excessive speed as a contributing factor increased rapidly in the 12 months to June, to 478 crashes with 97 deaths and 481 serious injuries.

## Who's seriously injured in road crashes

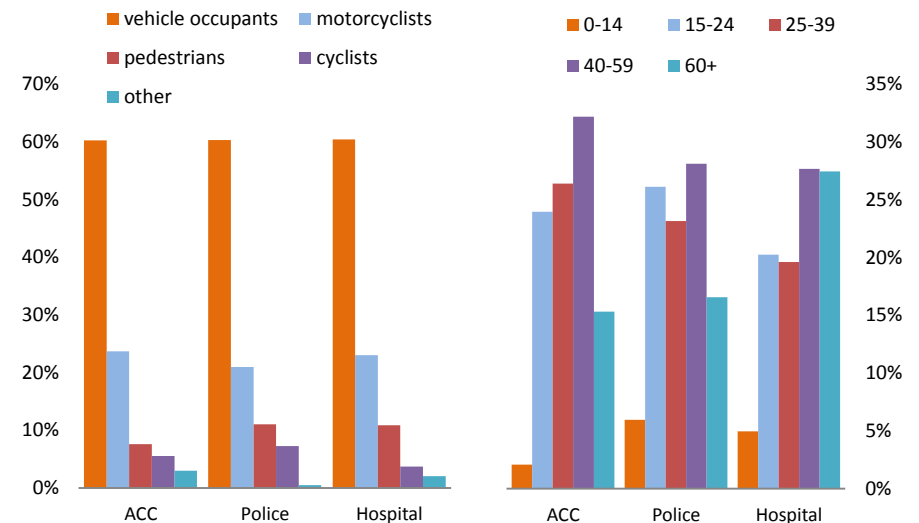
Three sources of information are regularly used to show the scope and distribution of road crash injuries in New Zealand: crash reports from NZ Police, ACC injury claims, and hospitalisations. Each source provides a slightly different picture of road crash injury, reflecting the needs and limitations of the respective agency. For example, Police cannot attend every crash, and not all people with serious injury are admitted to hospital (some can be treated in the emergency department and discharged).

In the 12 months to June 2015, Police reported 2034 people seriously injured in road crashes, 2575 hospitalised road crash casualties were discharged after a stay of more than one day, and ACC processed 4709 entitlement claims for motor vehicle crash injuries.

During this period:

- pedestrians accounted for 11% of reported serious injuries and 8% of ACC claims
- people aged 60 years or more made up 15% of ACC claims and 17% of reported serious injuries but 27% of hospital stays
- conversely, children made up 6% of reported serious injuries and 5% of hospital stays but only 2% of ACC claims.

Percentage of casualties by user type, age and reporting agency



## More information ...

Published 31 October 2015

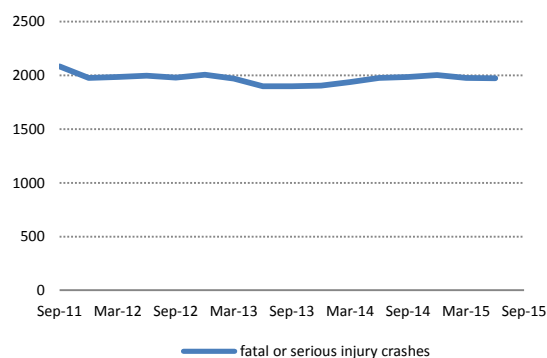
NZ Transport Agency  
Private Bag 6995  
Wellington 6141

This document and its regional time series data are available on the Transport Agency's website at <http://www.nzta.govt.nz/resources/road-safety-outcomes/>.

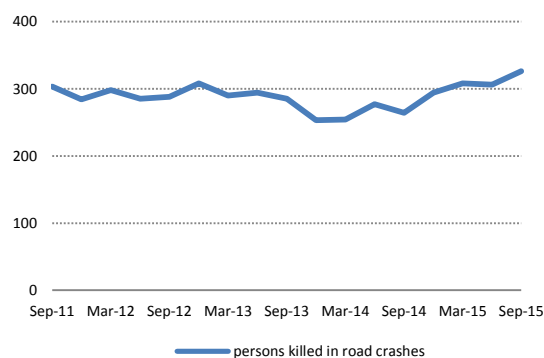
## ROAD SAFETY OUTCOME TRENDS 2011-2015 (12 month rolling figures)

Road safety outcome measures in the following charts and tables are provided for the last five years, up to the most recently available quarter. The measures are obtained from the Transport Agency's Crash Analysis System, ACC entitlement claims, Ministry of Health hospital discharge data, Ministry of Transport speed, restraint and public attitude surveys, Statistics NZ population data, and new vehicle registration figures.

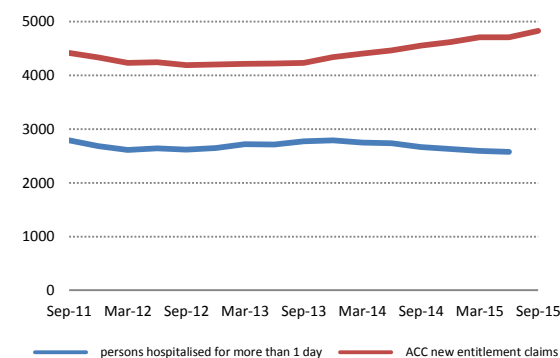
**Overall outcomes: crashes**



**Overall outcomes: fatalities**



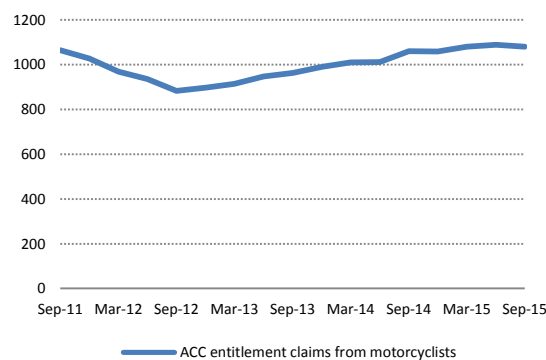
**Overall outcomes: injuries**



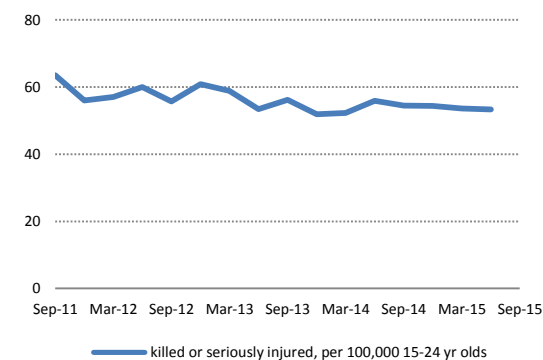
**Alcohol and drugs**

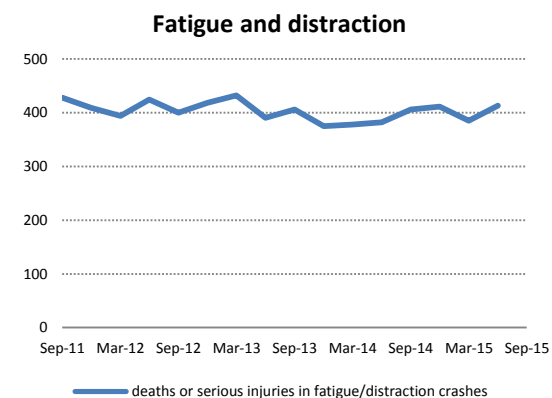
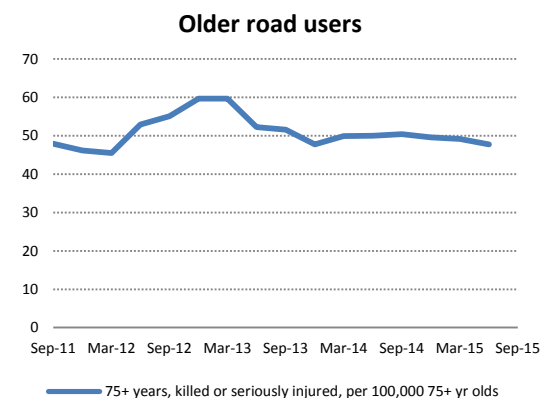
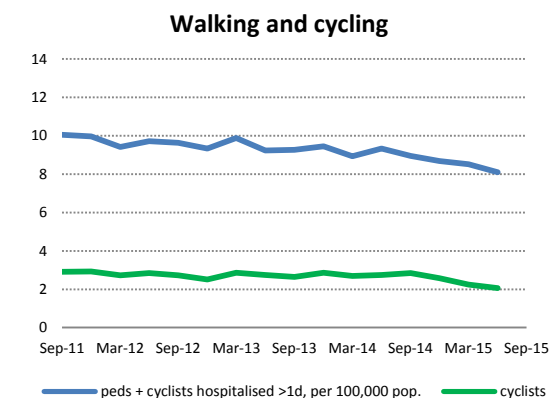
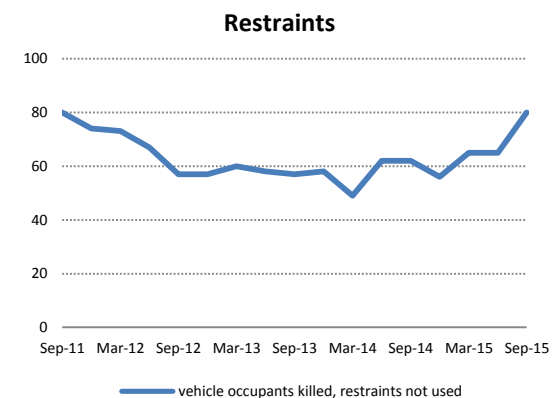
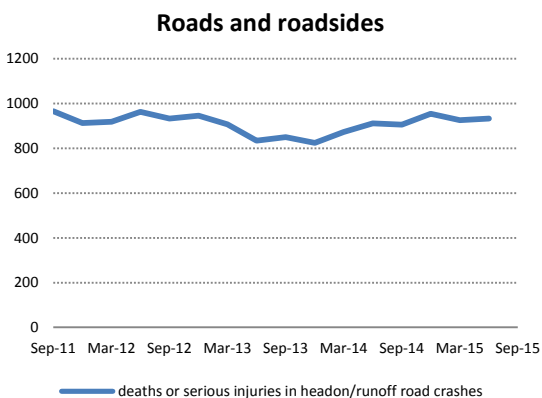
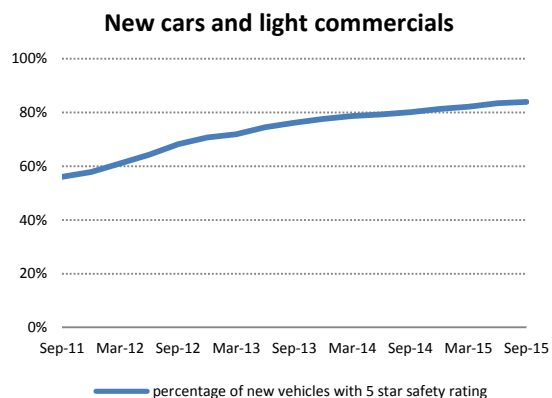
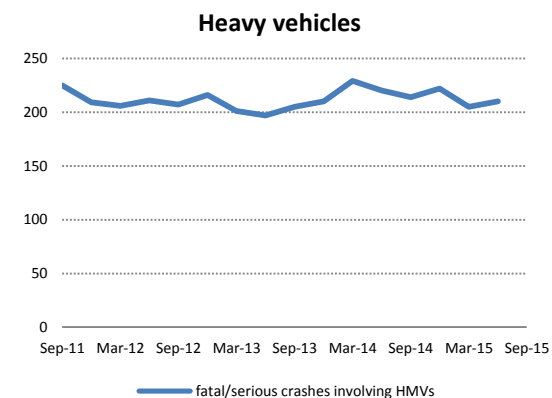
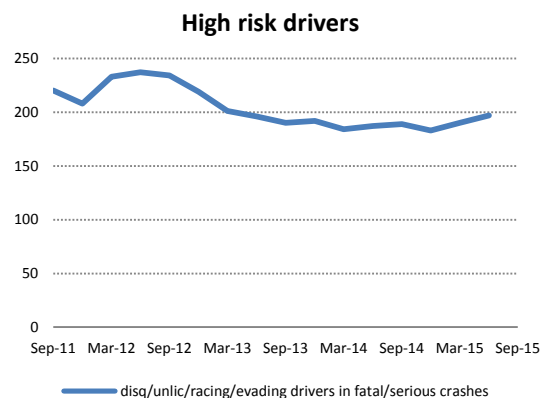
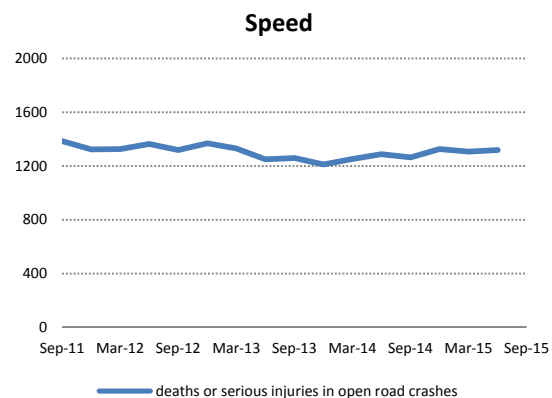


**Motorcycling**



**Young drivers**





NATIONAL ROAD SAFETY OUTCOMES IN DETAIL	LATEST FIGURES			LAST FIVE CALENDAR YEARS				
	latest quarter	latest 12 months	as at	2010/11	2011/12	2012/13	2013/14	2014/15
<b>Overall outcomes</b>								
<b>persons killed or seriously injured in road crashes</b>	553	2340	Jun 2015	2506	2379	2268	2332	2340
fatal or serious injury crashes	467	1971	Jun 2015	2094	1997	1899	1974	1971
persons killed in road crashes	68	326	Sep 2015	315	285	294	277	326
persons killed in road crashes, per 100,000 population, per year	5.9	7.1	Sep 2015	7.2	6.4	6.6	6.1	7.1
persons killed or seriously injured, per 100,000 population, per year	48	51	Jun 2015	57	54	51	52	51
persons killed or seriously injured, per 100 million vehicle km travelled	5.2	5.5	Jun 2015	6.0	5.8	5.4	5.5	5.5
persons hospitalised for more than 1 day (>1d), non-fatal	629	2575	Jun 2015	2771	2642	2712	2734	2575
ACC new entitlement claims	1266	4827	Sep 2015	4326	4243	4221	4461	4827
<b>Alcohol and drugs</b>								
<b>fatal or serious injuries in alcohol/drug crashes, per 100,000 population, per year</b>	8.6	10.6	Jun 2015	14.1	12.8	12.1	11.2	10.6
drivers killed with excess alcohol	9	40	Mar 2015	54	55	48	31	
% think high probability being stopped at CBT checkpoint	-	50%	2014	56%	52%	53%	50%	
% admit driven while affected by prescription or other drugs	-	10%	2014	-	-	-	10%	
<b>Young drivers</b>								
<b>young drivers killed or seriously injured, per 100,000 15-24 year olds, per year</b>	55	53	Jun 2015	61	58	52	56	53
young drivers (15-24 years) hospitalised >1d, per 100,000 15-24 year olds, per year	41	40	Jun 2015	54	46	49	47	40
young drivers (15-24 years) killed, per 100,000 15-24 year olds, per year	3.0	6.8	Sep 2015	7.6	6.4	5.4	6.1	6.8
young drivers (15-24 years) killed with excess alcohol, per 100,000 15-24 yr olds, per year	0.6	1.8	Mar 2015	3.3	2.2	2.2	2.2	
% youth believe will be stopped for non-alcohol/speed traffic offences	-	49%	2014	39%	42%	45%	49%	
drivers on GDL primary contributor in fatal/serious crashes	58	251	Jun 2015	272	231	199	240	251
fatal and serious crashes involving 15-19 year old drivers	64	250	Jun 2015	319	290	212	238	250
<b>Speed</b>								
<b>deaths or serious injuries in all open road crashes, 80-100 km/h roads</b>	292	1317	Jun 2015	1344	1364	1249	1287	1317
% vehicles exceeding 100 km/h limits	-	22%	2014	29%	31%	25%	25%	22%
% vehicles exceeding 50 km/h limits	-	52%	2014	58%	59%	53%	56%	52%
fatal/serious speed-related crashes	119	478	Jun 2015	451	394	397	408	478
% disagree probability being detected speeding is small	-	57%	2014	51%	55%	56%	57%	
mean rural speed (km/h)	-	95.1	2014	96.2	96.5	95.6	95.7	95.1
mean urban speed (km/h)	-	50.8	2014	52.0	52.0	51.3	51.7	50.8
<b>Motorcycling</b>								
<b>ACC entitlement claims from motorcyclists</b>	235	1079	Sep 2015	1058	935	946	1011	1088
motorcycle and moped riders killed, per 100,000 population, per year	0.8	1.0	Sep 2015	0.9	0.7	1.1	1.0	0.9
% of motorcycles in crashes with non-current WoFs	23%	24%	Jun 2015	25%	26%	27%	27%	24%
motorcyclists hospitalised >1d, per 100,000 population, per year <sup>(1)</sup>	12.3	12.8	Mar 2015	14.0	12.6	12.9	12.1	12.8
<b>Roads and roadsides</b>								
<b>fatal or serious injuries in head-on* and run off road crashes, 80-100 km/h roads</b>	204	932	Jun 2015	963	962	834	911	932
fatal or serious injuries in head-on (* not overtaking) crashes, 80-100 km/h roads	64	290	Jun 2015	292	318	243	298	290
fatal or serious injuries in run-off road crashes, 80-100 km/h roads	140	642	Jun 2015	671	644	591	613	642
fatal or serious injuries in intersection crashes	149	691	Jun 2015	749	717	731	647	691
fatal or serious injuries in pedestrian/cyclist crashes	99	412	Jun 2015	469	439	411	456	412
fatal or serious injuries in all crashes on SH network	201	920	Jun 2015	935	954	876	900	920

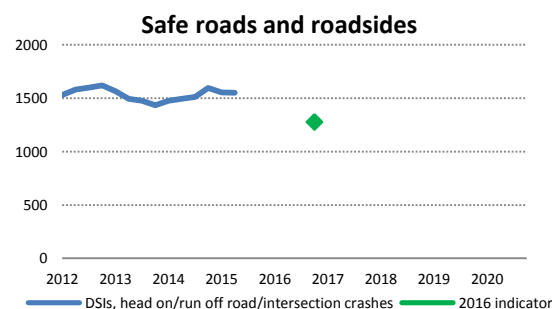
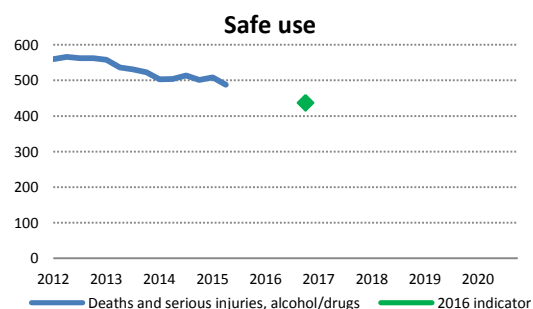
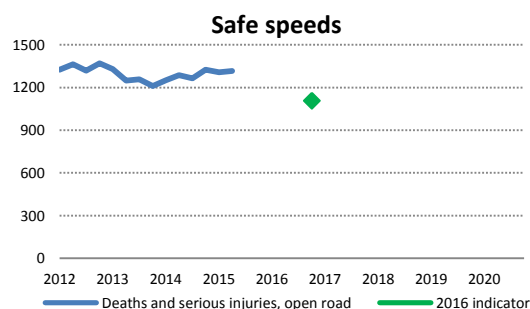
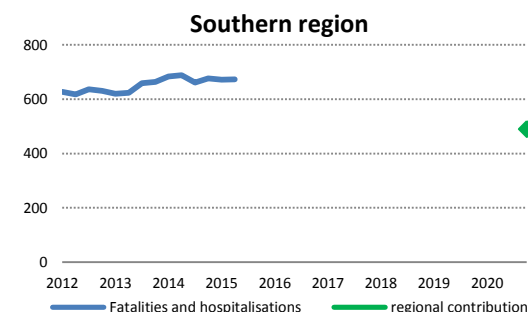
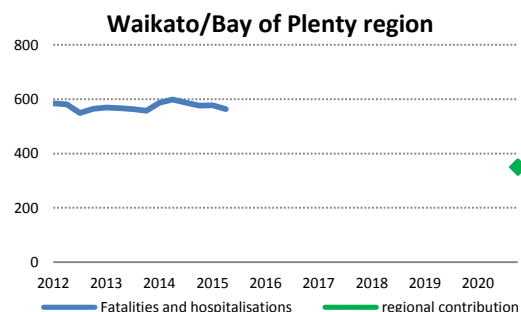
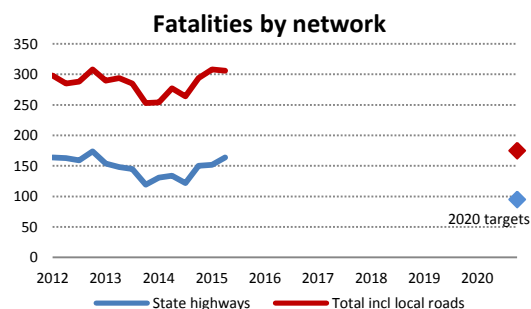
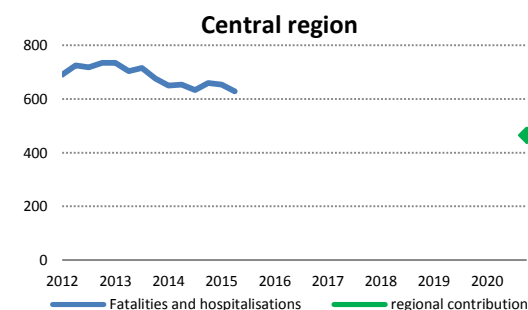
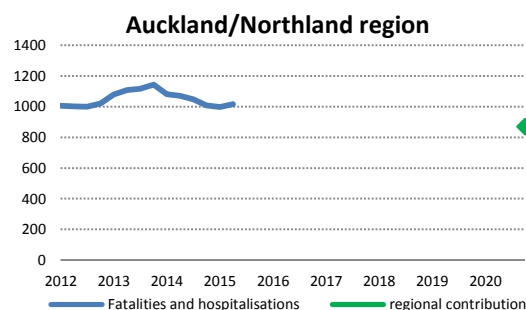
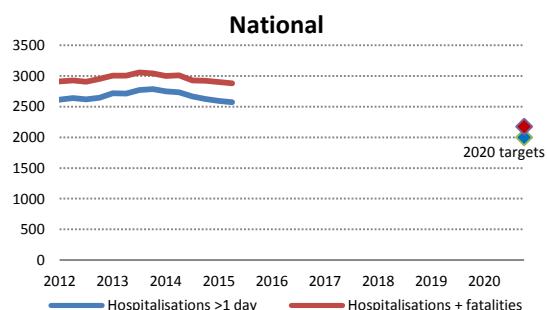
NATIONAL ROAD SAFETY OUTCOMES IN DETAIL	LATEST FIGURES			LAST FIVE FINANCIAL YEARS				
	latest quarter	latest 12 months	as at	2010/11	2011/12	2012/13	2013/14	2014/15
<b>High risk drivers</b>								
<b>high risk drivers<sup>(2)</sup> in fatal or serious injury crashes</b>	50	185	Jun 2015	235	237	196	187	197
disqualified drivers detected driving	1750	7408	Jun 2015	9396	8899	8251	8179	7408
notices issued for 3 <sup>rd</sup> or subsequent drunk/drugged driving offences	1039	4614	Jun 2015	6728	6526	5993	5299	4614
disqualified or unlicensed drivers involved in fatal/serious crash	46	169	Jun 2015	195	200	168	168	182
<b>Light vehicles</b>								
<b>% of new vehicles with 5-star safety rating</b>	84%	84%	Sep 2015	55%	64%	75%	79%	84%
% of vehicles in fatal/serious crashes with non-current WOFs <sup>(1)</sup>	12%	10%	Jun 2015	13%	12%	12%	10%	10%
% of fatal/serious injuries in crashes with contributing vehicle faults	2.7%	2.4%	Jun 2015	4.2%	4.2%	3.3%	3.2%	2.4%
average (median) age of light vehicle fleet (years)	-	14.1	2014	13.8	14.0	14.1	14.1	
<b>Fatigue and distraction</b>								
<b>fatal or serious injuries in fatigue/distraction crashes</b>	103	413	Jun 2015	415	424	390	382	413
fatal/serious injuries in crashes with contributing driver fatigue	36	192	Jun 2015	171	197	187	175	192
fatal/serious injuries in crashes with contributing driver distraction	69	230	Jun 2015	250	239	207	220	230
<b>Heavy vehicles</b>								
<b>fatal/serious crashes involving HMVs</b>	50	201	Jun 2015	220	211	197	220	210
fatal/serious injuries in HMV crashes	52	265	Jun 2015	256	264	229	247	265
% of fatal/serious HMV crashes where HMV was primary contributor	50%	47%	Jun 2015	47%	45%	46%	46%	50%
% of HMV drivers exceeding 90 km/h speed limit	-	31%	2014	44%	39%	32%	31%	
<b>Walking and cycling</b>								
<b>pedestrians and cyclists hospitalised &gt;1d, per 100,000 population, per year</b>	9.1	8.1	Jun 2015	10.0	9.7	9.2	9.3	8.1
pedestrians hospitalised >1 day, per 100,000 population, per year	6.8	6.0	Jun 2015	7.3	6.9	6.5	6.6	6.0
pedestrians and cyclists killed, per 100,000 population, per year	0.5	0.8	Sep 2015	1.1	0.8	1.1	0.9	0.9
fatal or serious injuries to school age (5-17) cyclists and pedestrians	16	75	Jun 2015	93	87	63	92	68
cyclists killed or hospitalised >1 day	27	102	Jun 2015	129	129	134	131	102
% cyclists wearing helmets	-	94%	2015	93%	92%	-	-	94%
<b>Older road users</b>								
<b>persons 75+ yrs killed or seriously injured in crashes, per 100,000 75+ yr olds, per year</b>	42	49	Jun 2015	47	53	52	50	48
persons 75+ years killed in road crashes	7	32	Sep 2015	28	33	43	37	29
persons 75+ years hospitalised >1d	73	318	Jun 2015	302	351	366	354	318
persons 75+ years, ACC claims, per 100,000 75+ year olds, per year	86	77	Sep 2015	75	66	74	73	75
<b>Restraints</b>								
<b>vehicle occupant deaths where restraints not worn</b>	26	80	Sep 2015	81	67	58	62	65
% of children (5-9 years) in booster seats or child restraints	-	21%	2013	-	23%	-	21%	-
% front seat adult vehicle occupants restrained	-	97%	2014	96%	96%	96%	97%	
% child (0-4 years) vehicle occupants restrained	-	93%	2014	93%	-	92%	-	93%
% drivers think highly likely to be stopped for non-compliance	-	43%	2014	41%	40%	40%	41%	43%
Overseas-licensed drivers involved in fatal/serious crash	21	127	Jun 2015	94	136	107	107	127

(1) National headline measure not available at regional/district level, this measure used instead for local government region and police district charts

(2) High risk driver = disqualified, unlicensed, illegal street racing, evading enforcement

# PROGRESS TOWARDS NZ TRANSPORT AGENCY TARGET

In 2013 the Transport Agency developed a set of lead indicators and national targets by extrapolating existing trends out to 2020 and adding some stretch, to help focus its efforts, in conjunction with partner agencies, to significantly reduce deaths and serious injuries. They do not predict future performance, but indicate the need for sustained efforts to maintain current gains and for innovations to make new gains. The **Safe Vehicles** indicator is 90% of new vehicles rated 5-star by 2016.

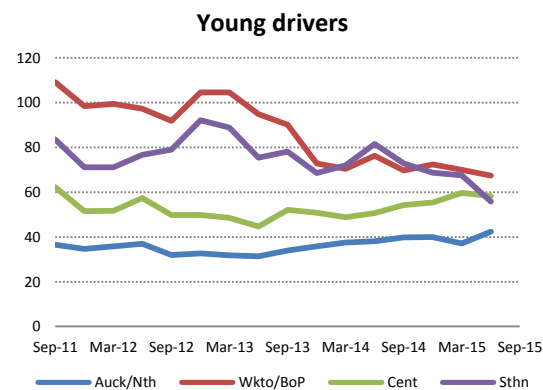
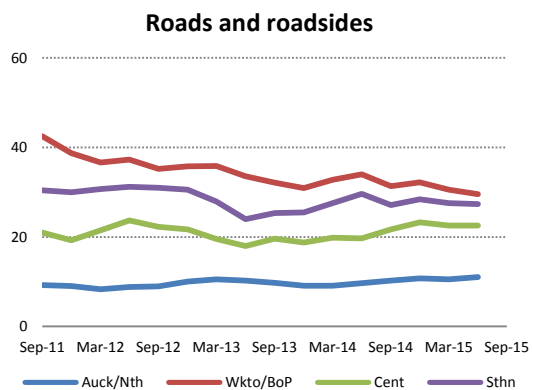
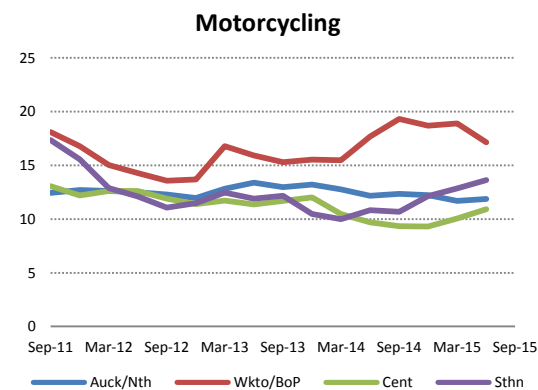
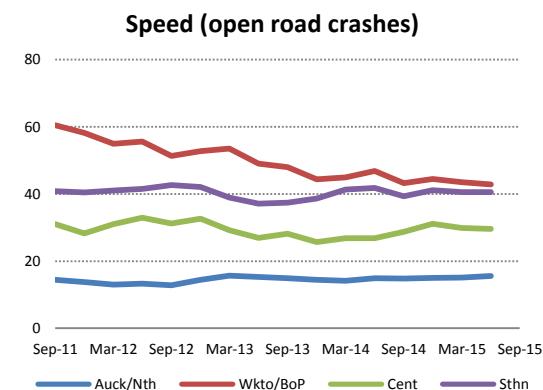
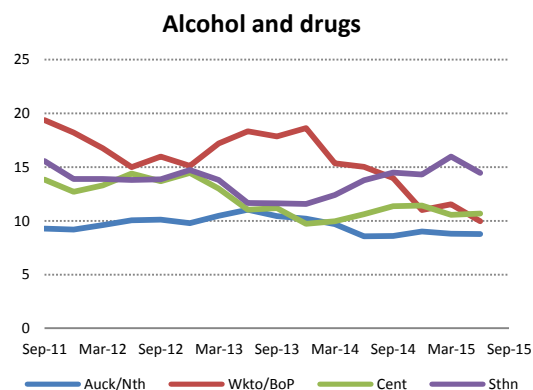
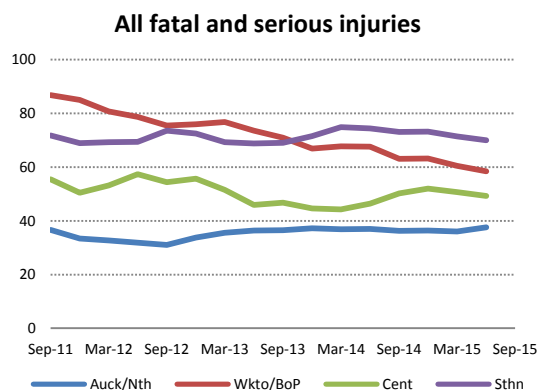




## NZTA REGIONAL COMPARISONS 2011-2015 (12-month rolling figures)

The following charts compare per capita trends over the past 5 years in the four NZ Transport Agency regions for the *Safer Journeys* high priority road safety concerns. The values in each chart are the injury rates per 100,000 population for the preceding 12 months, allowing comparisons across years, regions and priority areas.

### Fatal and serious injuries\* in crashes, per 100,000 population



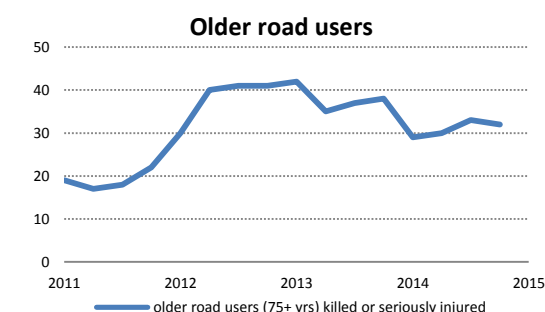
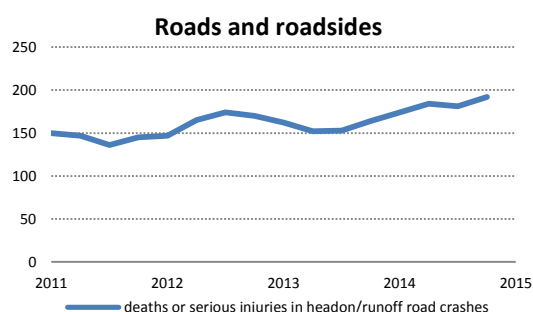
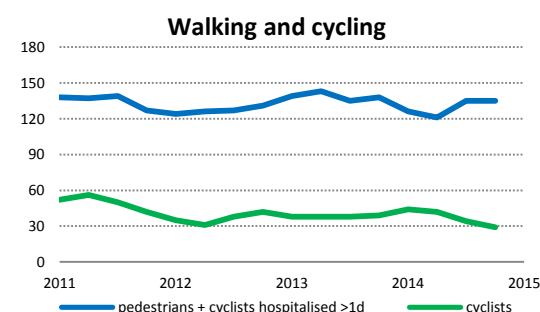
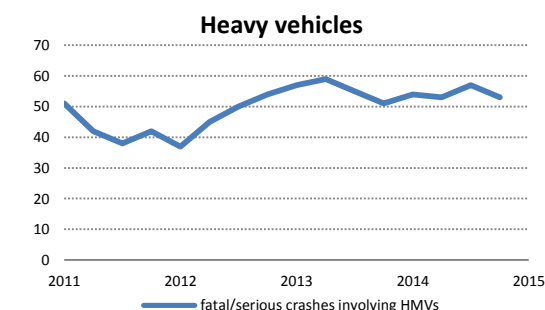
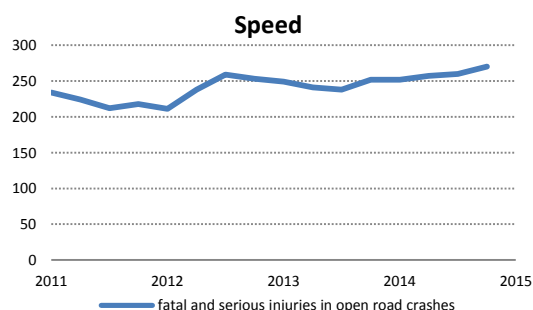
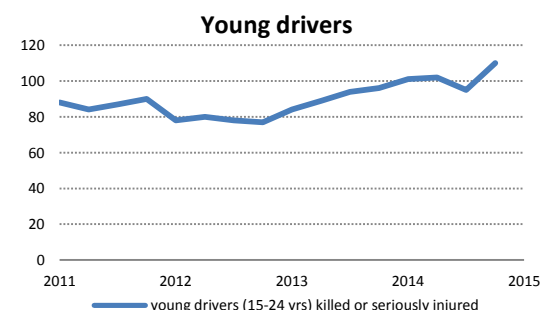
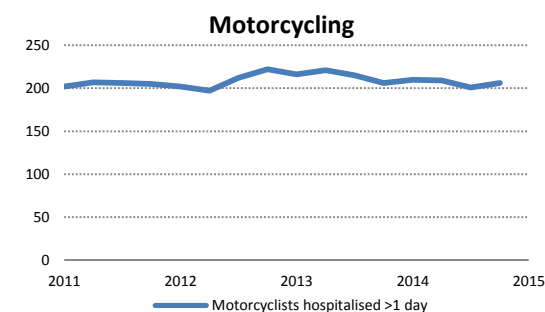
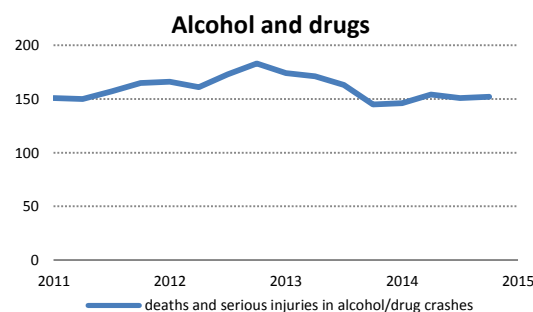
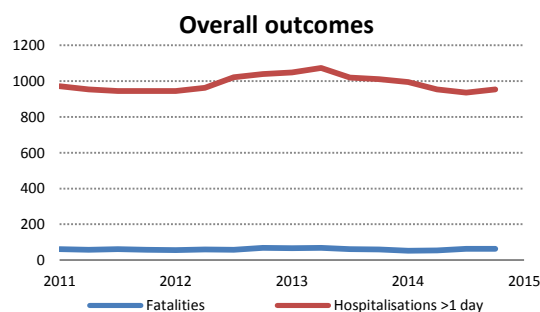
\* Motorcycle casualties = hospitalisations for more than 1 day; head-on and run-off road crashes are open road crashes (80-100 km/h); young driver rates expressed per 100,000 15-24 year olds.

NZ TRANSPORT AGENCY REGIONS - OUTCOMES		LAST FIVE YEARS				
		2011	2012	2013	2014	latest 12 months, to Jun 2015
<b>Overall outcomes</b>						
<b>fatal or serious injuries in all crashes, per 100,000 population</b>	<b>NZ =</b>	53	54	50	52	51
Northland and Auckland region		33	34	37	36	38
Waikato and Bay of Plenty region		86	76	67	63	58
Central region		50	56	44	52	49
Southern region		69	73	71	73	70
<b>Alcohol and drugs</b>						
<b>fatal or serious injuries in alcohol/drug crashes, per 100,000 population</b>	<b>NZ =</b>	13	13	12	11	11
Northland and Auckland region		9	10	10	9	9
Waikato and Bay of Plenty region		18	15	19	11	10
Central region		13	14	10	11	11
Southern region		14	15	12	14	14
<b>Young drivers</b>						
<b>young drivers killed or seriously injured, per 100,000 total population</b>	<b>NZ =</b>	8	8	7	8	8
Northland and Auckland region		5	5	5	6	6
Waikato and Bay of Plenty region		13	13	13	13	12
Central region		7	7	8	8	7
Southern region		10	10	11	11	11
<b>young drivers killed or seriously injured, per 100,000 15-24 year olds</b>	<b>NZ =</b>	56	60	52	55	53
Northland and Auckland region		35	33	36	40	42
Waikato and Bay of Plenty region		98	105	73	72	67
Central region		52	50	51	55	58
Southern region		71	92	68	69	56
<b>Speed</b>						
<b>fatal or serious injuries in open road (80-100km/h) crashes, per 100,000 population</b>	<b>NZ =</b>	30	31	27	29	29
Northland and Auckland region		14	14	14	15	16
Waikato and Bay of Plenty region		58	53	44	44	43
Central region		28	33	25	31	30
Southern region		40	42	39	41	41
<b>Motorcycling</b>						
<b>motorcyclists hospitalised &gt;1d from road crashes, per 100,000 population</b>	<b>NZ =</b>	14	12	13	12	13
Northland and Auckland region		13	12	13	12	12
Waikato and Bay of Plenty region		17	14	16	19	17
Central region		12	11	12	9	11
Southern region		16	11	11	12	14
<b>Roads and roadsides</b>						
<b>fatal or serious injuries in head-on* and run off road crashes, per 100,000 population</b>	<b>NZ =</b>	21	21	18	21	21
Northland and Auckland region		12	9	10	9	11
Waikato and Bay of Plenty region		40	39	36	31	32
Central region		26	19	22	19	23
Southern region		30	30	31	25	28

NZ TRANSPORT AGENCY REGIONS - OUTCOMES		LAST FIVE YEARS				
		2011	2012	2013	2014	latest 12 months, to Jun 2015
<b>High risk drivers</b>						
<b>high risk drivers in fatal or serious crashes, per 100,000 population</b>	NZ =	4.7	4.9	4.3	4.0	4.3
Northland and Auckland region		5.1	5.7	5.1	4.5	5.5
Waikato and Bay of Plenty region		4.3	4.8	4.3	2.9	3.2
Central region		4.2	5.2	3.8	4.3	4.3
Southern region		4.2	3.0	3.0	3.6	3.4
<b>Light vehicles</b>						
<b>percentage of light vehicles in fatal/serious crashes without current WOF</b>	NZ =	12%	12%	12%	9%	10%
Northland and Auckland region		11%	14%	9%	9%	10%
Waikato and Bay of Plenty region		11%	11%	15%	9%	11%
Central region		12%	15%	15%	10%	10%
Southern region		14%	10%	10%	8%	9%
<b>Fatigue and distraction</b>						
<b>fatal or serious injuries in fatigue/distraction crashes, per 100,000 population</b>	NZ =	9	9	8	9	9
Northland and Auckland region		5	5	5	6	6
Waikato and Bay of Plenty region		15	17	14	13	13
Central region		10	10	9	10	10
Southern region		12	11	10	11	11
<b>Heavy vehicles</b>						
<b>fatal or serious HMV crashes, per billion vkt (all vehicles)</b>	NZ =	5.1	5.2	5.0	5.2	4.9
Northland and Auckland region		3.0	3.2	4.2	3.7	3.6
Waikato and Bay of Plenty region		7.9	8.3	5.8	5.8	5.4
Central region		4.6	5.9	4.5	5.4	4.7
Southern region		6.1	4.8	6.1	6.8	6.5
<b>Walking and cycling</b>						
<b>pedestrians and cyclists hospitalised &gt;1 day, per 100,000 population</b>	NZ =	10	9	9	9	8
Northland and Auckland region		16	13	15	14	14
Waikato and Bay of Plenty region		6	5	6	4	4
Central region		8	9	8	9	7
Southern region		8	7	7	7	6
<b>Older road users</b>						
<b>persons 75+ years killed or seriously injured, per 100,000 75+ year olds</b>	NZ =	46	60	48	48	47
Northland and Auckland region		22	51	42	35	36
Waikato and Bay of Plenty region		75	71	48	45	42
Central region		35	58	27	41	37
Southern region		70	68	83	78	77
<b>Restraints</b>						
<b>vehicle occupants killed, restraints not worn, 3 year average, per 100,000 population</b>	NZ =	1.7	1.3	1.3	1.2	1.4
Northland and Auckland region		0.8	0.4	0.9	0.8	0.9
Waikato and Bay of Plenty region		3.3	3.1	2.5	2.7	2.8
Central region		1.9	1.5	1.0	1.2	1.1
Southern region		1.8	1.2	1.4	1.8	1.8

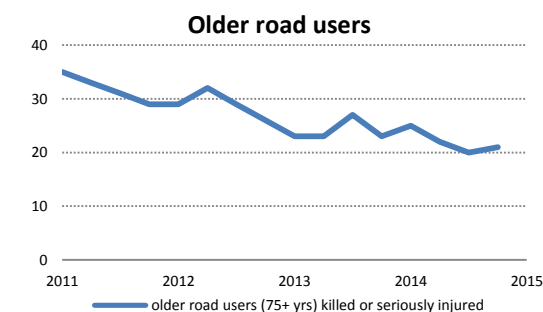
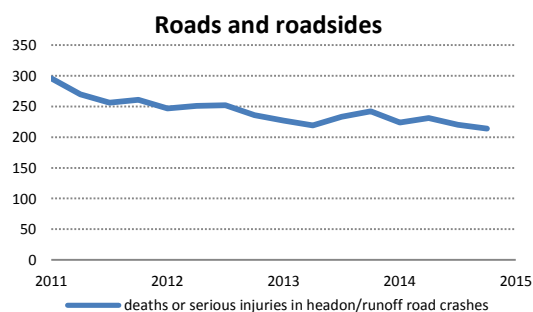
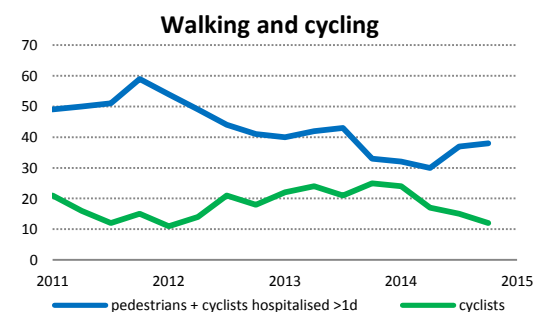
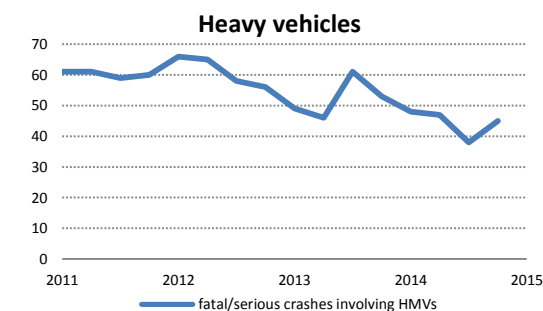
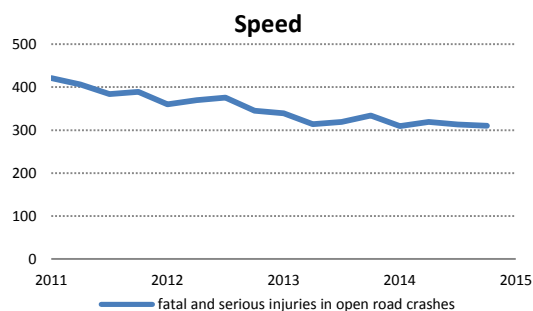
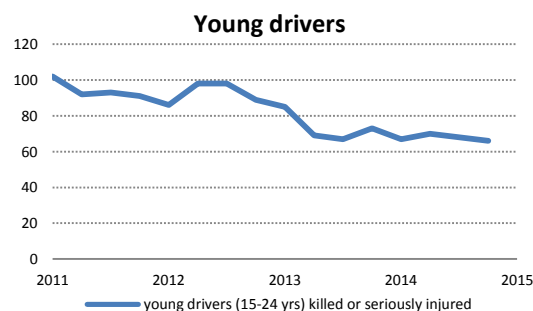
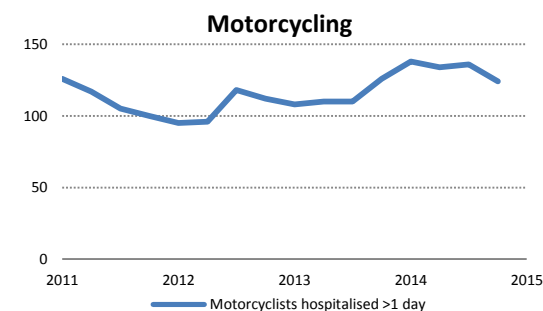
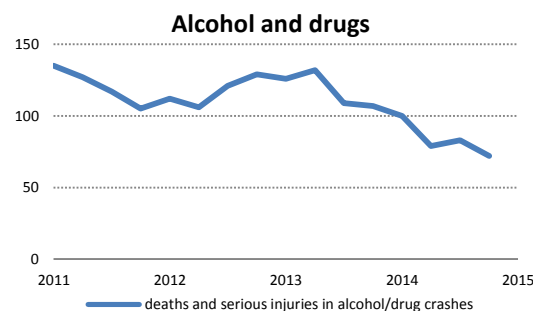
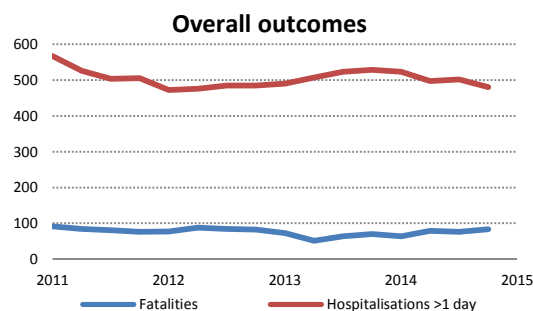
## NZTA AUCKLAND/NORTHLAND REGION OUTCOME TRENDS (12 month rolling figures)

Road safety outcome measures for the four Transport Agency regions are provided for the last five years in the following charts, up to the most recently available quarter, for eight of the *Safer Journeys* high and medium areas of concern. The measures are a subset of the national outcome measures presented earlier in this report (pages 4 – 7). Data for the other areas of concern are available in the [regional time series spreadsheet](#) accompanying this report (refer page 3).



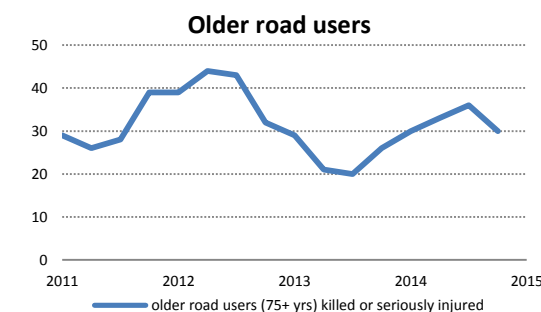
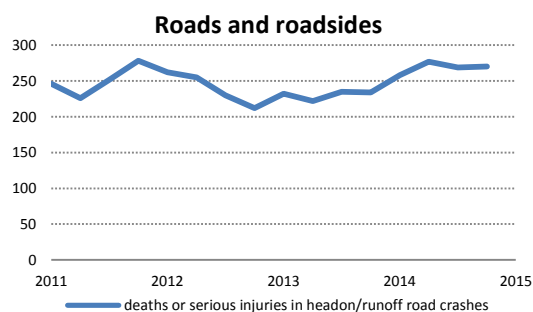
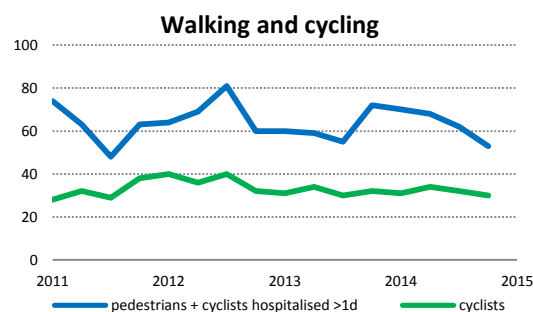
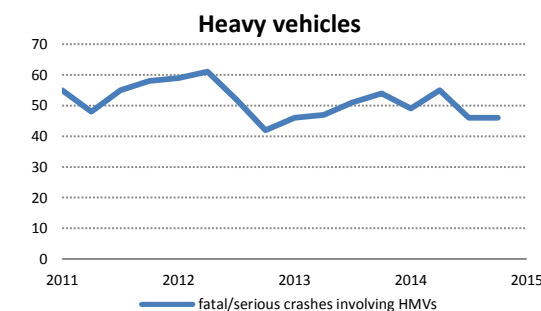
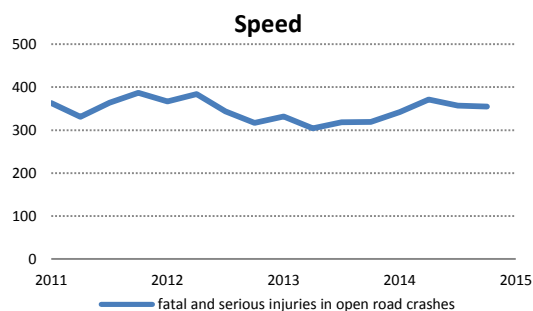
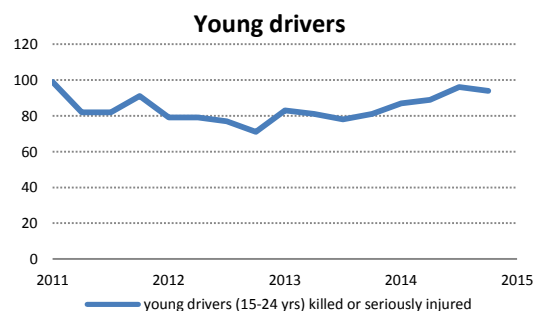
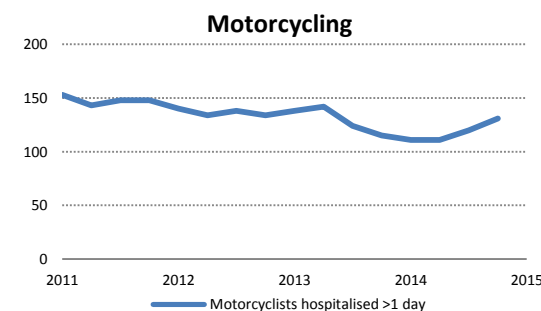
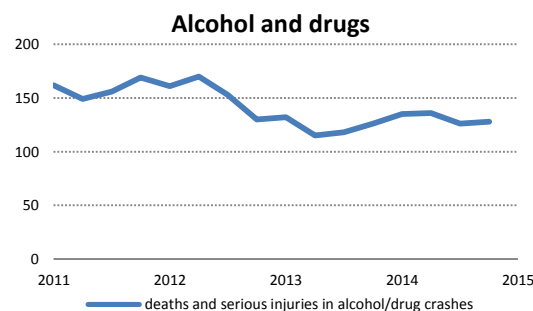
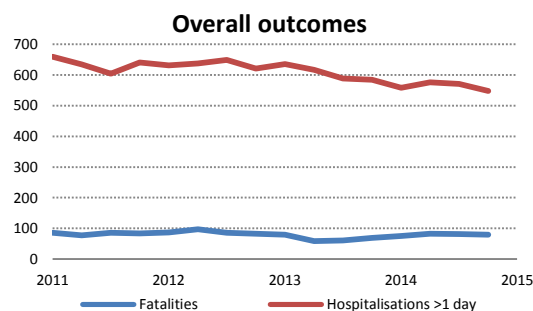
## NZTA WAIKATO/BAY OF PLENTY REGION OUTCOME TRENDS (12 month rolling figures)

Road safety outcome measures for the four Transport Agency regions are provided for the last five years in the following charts, up to the most recently available quarter, for eight of the *Safer Journeys* high and medium areas of concern. The measures are a subset of the national outcome measures presented earlier in this report (pages 4 – 7). Data for the other areas of concern are available in the [regional time series spreadsheet](#) accompanying this report (refer page 3).



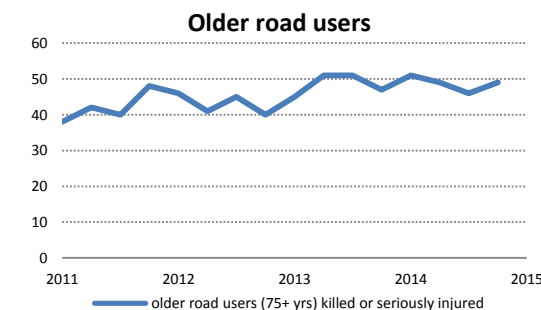
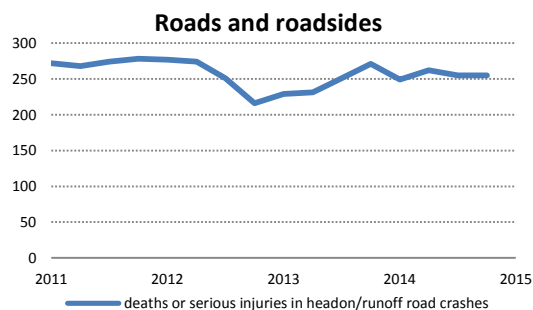
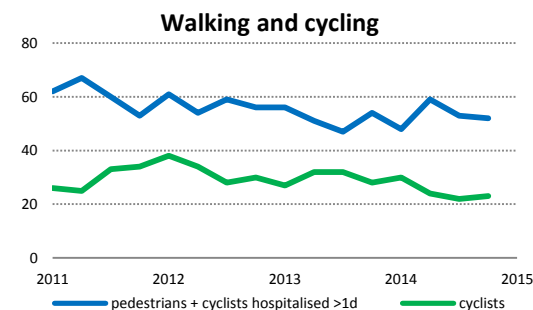
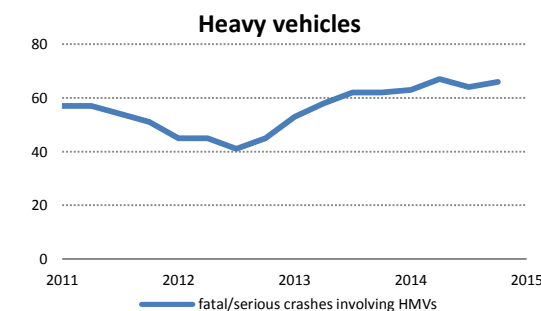
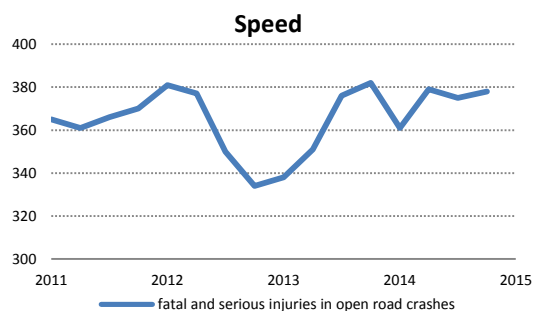
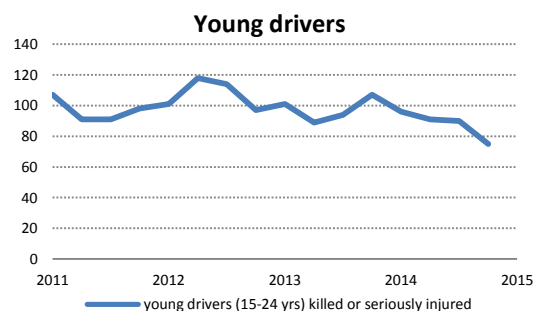
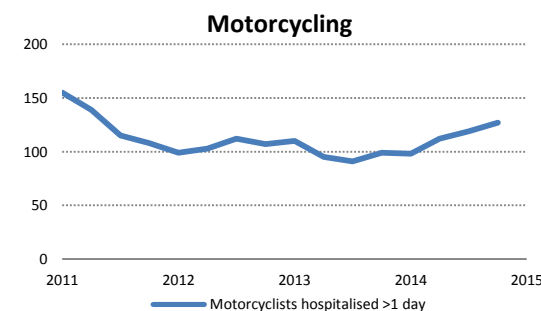
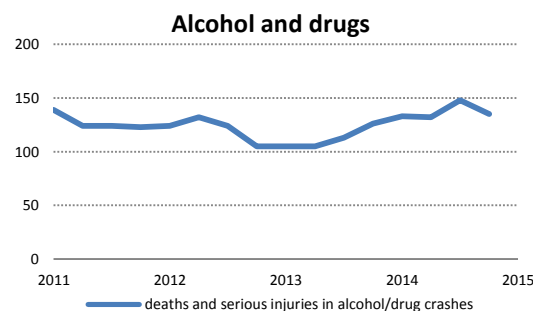
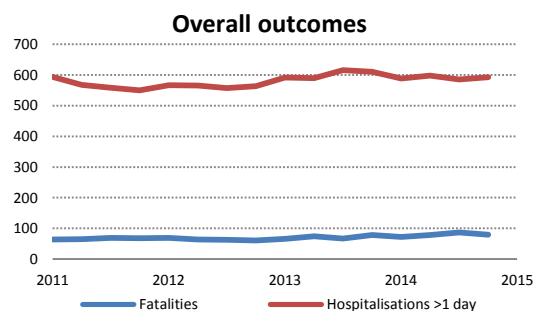
## NZTA CENTRAL REGION OUTCOME TRENDS (12 month rolling figures)

Road safety outcome measures for the four Transport Agency regions are provided for the last five years in the following charts, up to the most recently available quarter, for eight of the *Safer Journeys* high and medium areas of concern. The measures are a subset of the national outcome measures presented earlier in this report (pages 4 – 7). Data for the other areas of concern are available in the [regional time series spreadsheet](#) accompanying this report (refer page 3).



## NZTA SOUTHERN REGION OUTCOME TRENDS (12 month rolling figures)

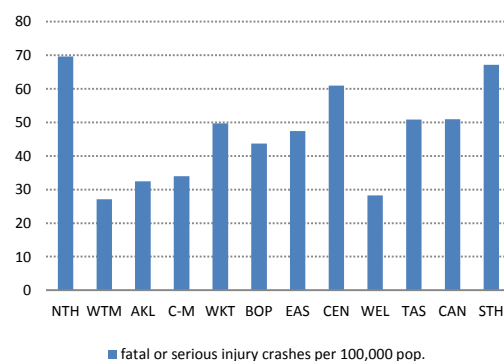
Road safety outcome measures for the four Transport Agency regions are provided for the last five years in the following charts, up to the most recently available quarter, for eight of the *Safer Journeys* high and medium areas of concern. The measures are a subset of the national outcome measures presented earlier in this report (pages 4 – 7). Data for the other areas of concern are available in the [regional time series spreadsheet](#) accompanying this report (refer page 3).



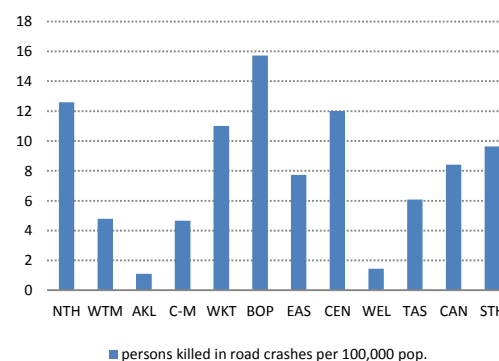
## COMPARISON OF ROAD SAFETY OUTCOMES BY POLICE DISTRICT

The following charts and tables show headline outcome measures for the 12 months to the end of the latest available quarter. Some alternative measures are shown if the national measure is not available at a regional or police district level. In cases where the numbers involved are too small to give meaningful single year comparisons, some measures are shown on an averaged three-yearly basis.

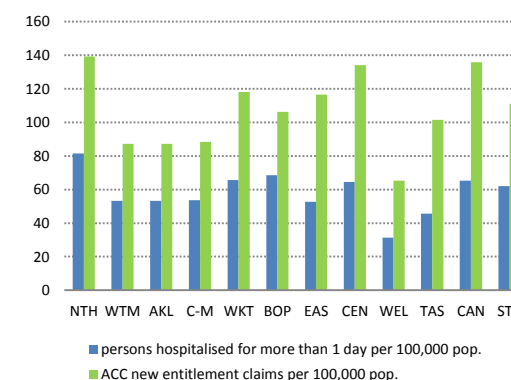
**Overall outcomes: crashes**



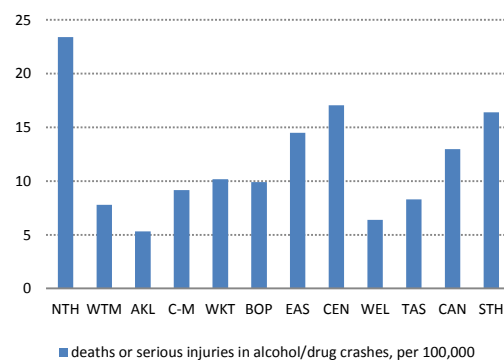
**Overall outcomes: fatalities**



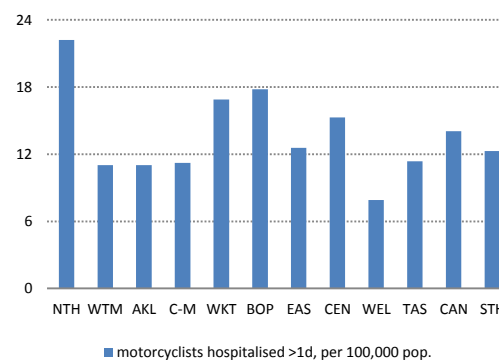
**Overall outcomes: injuries**



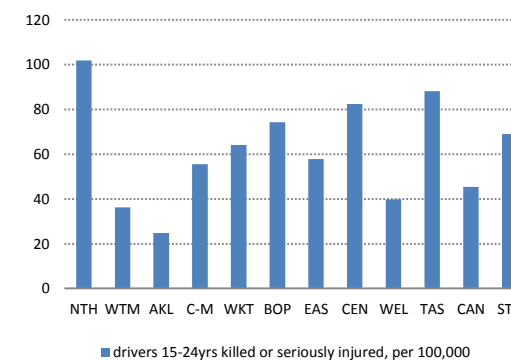
**Alcohol and drugs**



**Motorcycling**

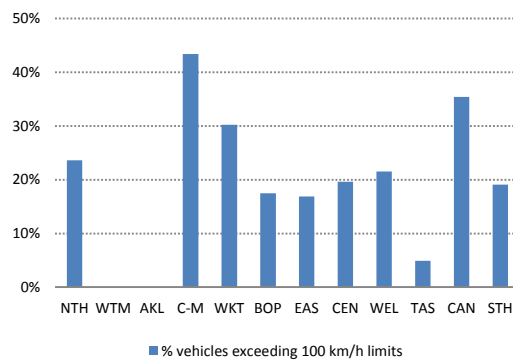


**Young drivers**

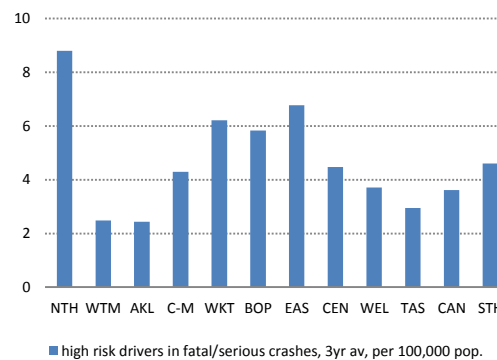




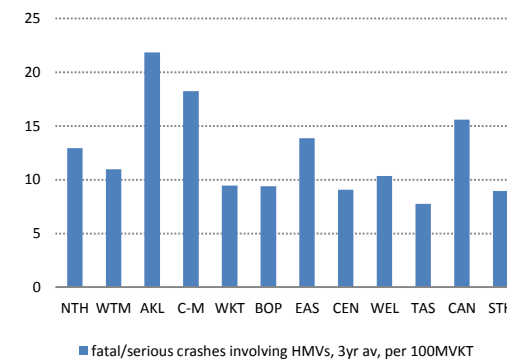
### Speed



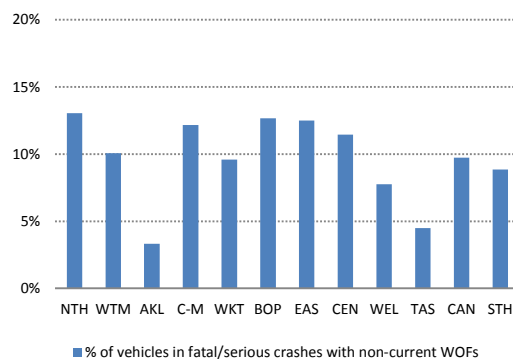
### High risk drivers



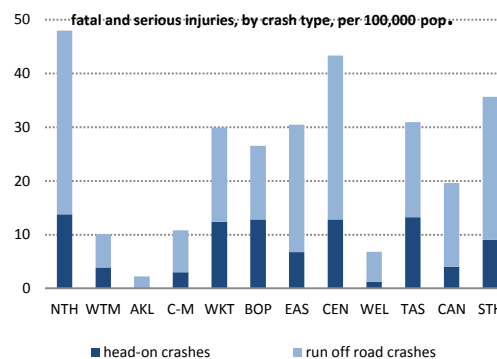
### Heavy vehicles



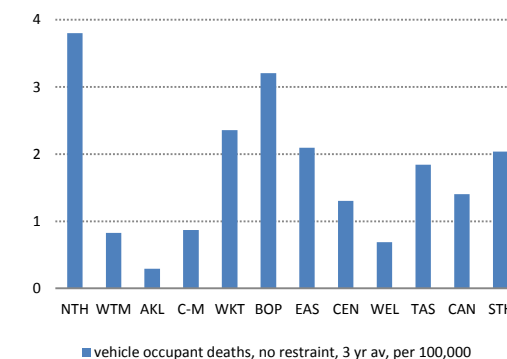
### Light vehicles



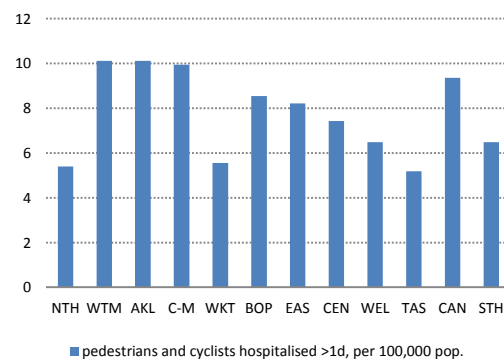
### Roads and roadsides



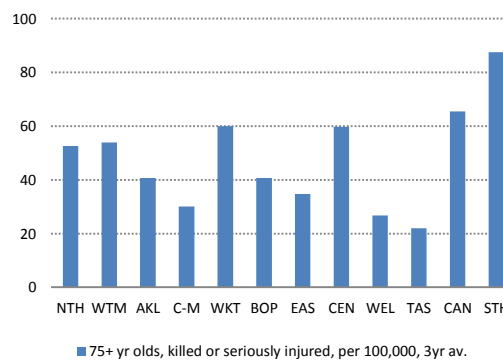
### Restraints



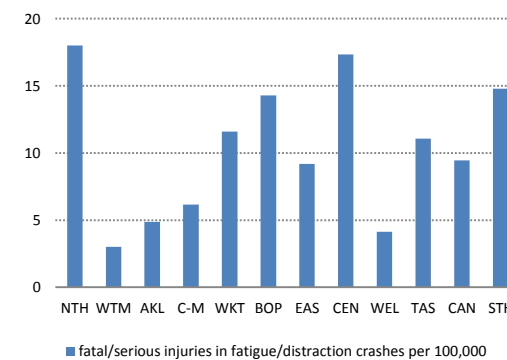
### Walking and cycling



### Older road users



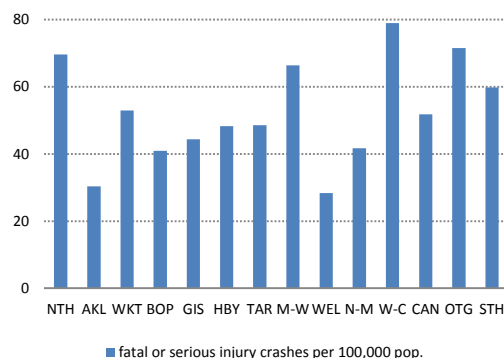
### Fatigue and distraction



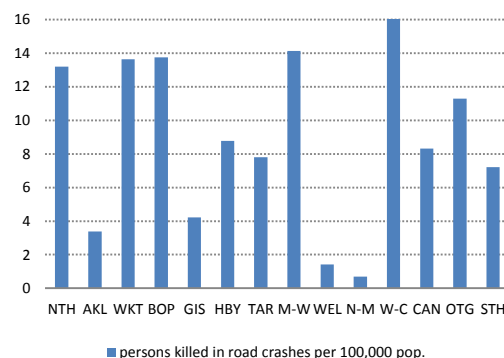
# COMPARISON OF ROAD SAFETY OUTCOMES BY LOCAL GOVERNMENT REGION

The following charts and tables show headline outcome measures for the 12 months to the end of the latest available quarter. Some alternative measures are shown if the national measure is not available at a regional or police district level. In cases where the numbers involved are too small to give meaningful single year comparisons, some measures are shown on an averaged three-yearly basis.

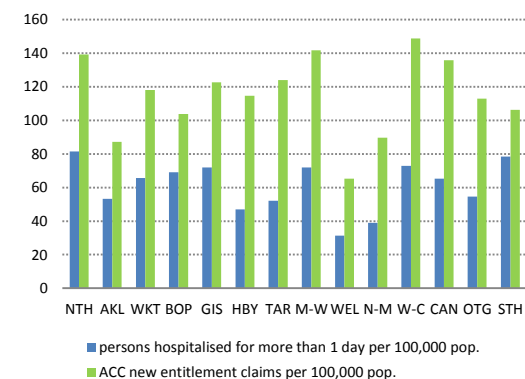
**Overall outcomes: crashes**



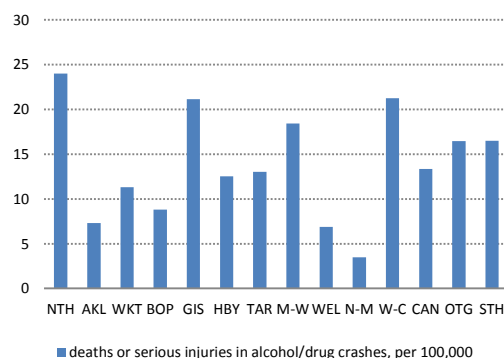
**Overall outcomes: fatalities**



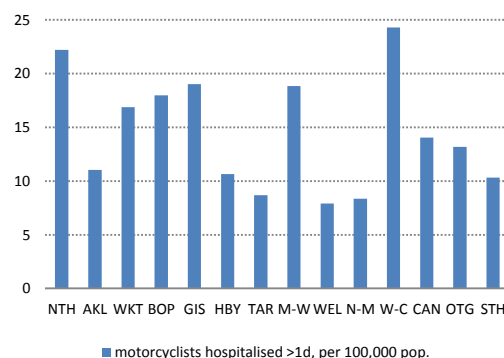
**Overall outcomes: injuries**



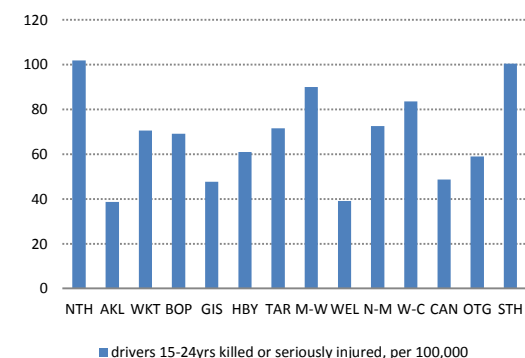
**Alcohol and drugs**



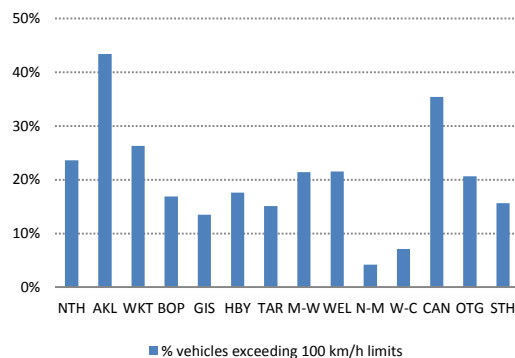
**Motorcycling**



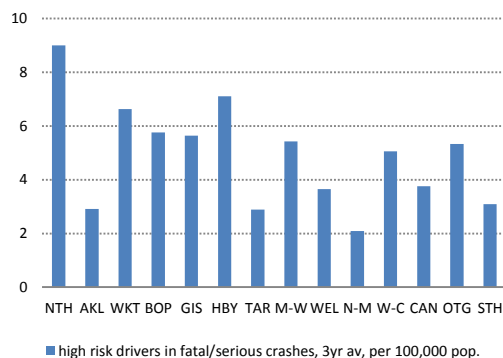
**Young drivers**



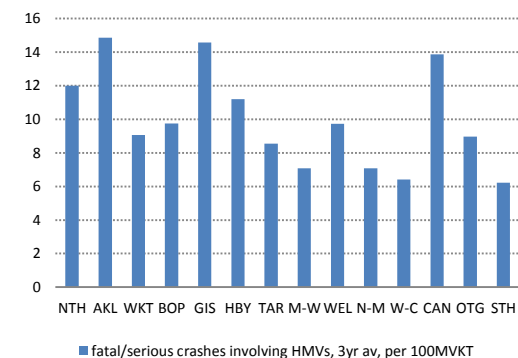
### Speed



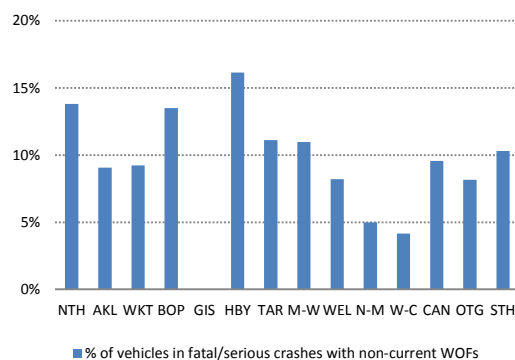
### High risk drivers



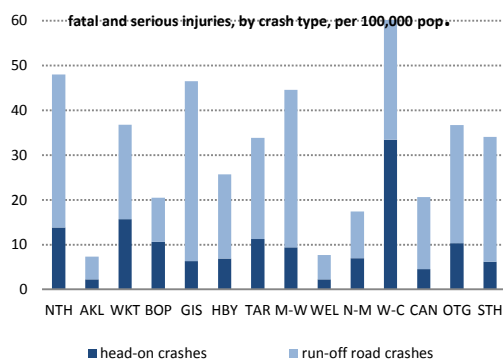
### Heavy vehicles



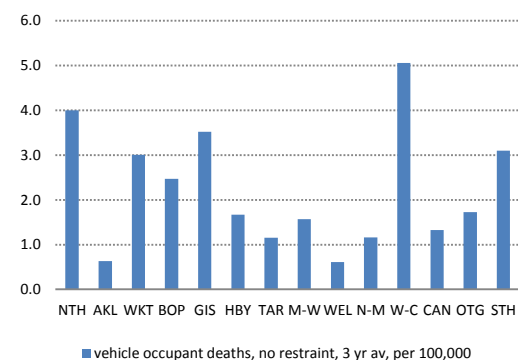
### Light vehicles



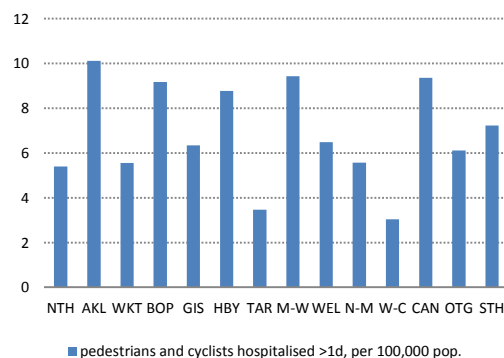
### Roads and roadsides



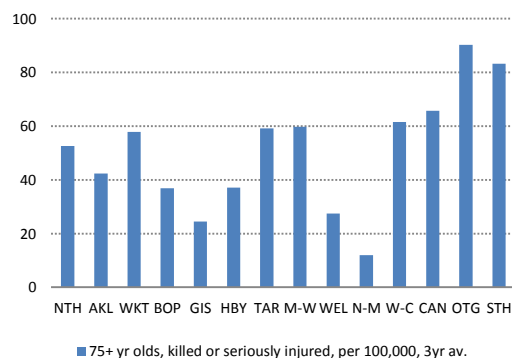
### Restraints



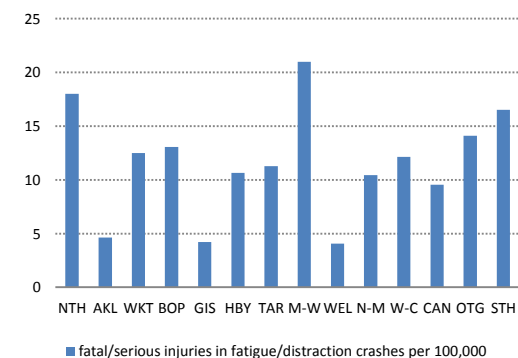
### Walking and cycling



### Older road users



### Fatigue and distraction



POLICE DISTRICT ROAD SAFETY OUTCOMES		NTH	WTM	AKL	C-M	Total Auck	WKT	BOP	EAS	CEN	WEL	TAS	CAN	STH	NZ
Overall	fatal or serious injury crashes per 100,000 population	70	27	32	34	31	50	44	47	61	28	51	51	67	43
	persons killed in road crashes, per 100,000 population	13	5	1	5	4	11	16	8	12	1	6	8	10	7.2
	persons hospitalised more than 1 day (>1d) , per 100000 popn.	82	53	53	54	53	66	68	53	64	31	46	65	62	57
	ACC new entitlement claims, per 100000 population	139	87	87	88	88	118	106	116	134	65	101	136	111	106
Alcohol	deaths or serious injuries in alcohol/drug crashes, per 100,000 popn.	23	8	5	9	8	10	10	14	17	6	8	13	16	11
Youth	young driver fatal/serious injuries, per 100,000 15-24 year olds	102	36	25	56	40	64	74	58	82	40	88	45	69	54
Speed	% vehicles exceeding 100 km/h limits	24%	0%	0%	43%	43%	30%	18%	17%	20%	22%	5%	35%	19%	22%
High risk	high risk drivers in fatal/serious crash, 3-year average per 100,000 popn.	9	2	2	4	3	6	6	7	4	4	3	4	5	4
Roads and roadsides	deaths + serious injuries in head-on crashes, per 100,000 popn.	14	4	0	3	2	12	13	7	13	1	13	4	9	6
	deaths + serious injuries, run-off road crashes, per 100,000 popn.	34	6	2	8	6	18	14	24	30	6	18	16	27	14
	deaths + serious injuries, intersection crashes, per 100,000 popn.	19	10	14	11	12	17	12	12	20	11	11	24	23	15
	deaths + serious injuries in ped/cyclist crashes, per 100,000 popn.	5	7	14	8	9	6	8	8	8	8	11	12	12	9
Motorcycles	motorcyclists hospitalised >1d, per 100,000 population	22	11	11	11	11	17	18	13	15	8	11	14	12	9
Light vehicles	% of vehicles in fatal/serious crashes without current WoFs	13%	10%	3%	12%	9%	10%	13%	13%	11%	8%	4%	10%	9%	10%
Fatigue	fatal/serious injuries in fatigue/distraction crashes, per 100,000 popn.	18	3	5	6	5	12	14	9	17	4	11	9	15	9
Heavy vehicles	fatal/serious crashes involving HMTVs, 3yr avg, per 100m VKT	13	11	22	18	17	9	9	14	9	10	8	16	9	11
Walk/cycle	pedestrians and cyclists hospitalised >1d, per 100,000 population	5	10	10	10	10	6	9	8	7	6	5	9	6	8
Older users	persons 75+ years killed or seriously injured, per 100,000, 3yr avg.	53	54	41	30	42	60	41	35	60	27	22	65	87	52
Restraints	occupant deaths, restraints not worn, last 3 yrs, per 100,000 popn.	3.8	0.8	0.3	0.9	0.7	2.4	3.2	2.1	1.3	0.7	1.8	1.4	2.0	1.5

REGIONAL ROAD SAFETY OUTCOMES		NTH	AKL	WKT	BOP	GIS	HBV	TAR	M-W	WEL	N-M	W-C	CAN	OTG	STH
Overall	fatal or serious injury crashes per 100,000 population	70	30	53	41	44	48	49	66	28	42	79	52	71	60
	persons killed in road crashes, per 100,000 population	13	3	14	14	4	9	8	14	1	1	27	8	11	7
	persons hospitalised more than 1 day (>1d) , per 100,000 popn.	82	53	66	69	72	47	52	72	31	39	73	65	55	78
	ACC new entitlement claims, per 100,000 population	139	87	118	104	123	115	124	142	65	90	149	136	113	106
Alcohol	deaths or serious injuries in alcohol/drug crashes, per 100,000 popn.	24	7	11	9	21	13	13	18	7	3	21	13	16	17
Youth	young driver fatal/serious injuries, per 100,000 15-24 year olds	102	39	70	69	48	61	72	90	39	73	84	49	59	100
Speed	% vehicles exceeding 100 km/h limits	24%	43%	26%	17%	14%	18%	15%	21%	22%	4%	7%	35%	21%	16%
High risk	high risk drivers in fatal/serious crash, 3yr avg, per 100,000 popn.	9	3	7	6	6	7	3	5	4	2	5	4	5	3
Roads and roadsides	deaths + serious injuries in head-on crashes, per 100,000 popn.	14	2	16	11	6	7	11	9	2	7	33	5	10	6
	deaths + serious injuries, run-off road crashes, per 100,000 popn.	34	5	21	10	40	19	23	35	5	10	39	16	26	28
	deaths + serious injuries, intersection crashes, per 100,000 popn.	19	11	16	13	11	12	13	24	10	12	9	24	26	19
	deaths + serious injuries in ped/cyclist crashes, per 100,000 popn.	5	10	7	7	2	9	8	8	8	11	6	12	13	11
Motorcycles	motorcyclists hospitalised >1d, per 100,000 population	22	11	17	18	19	11	9	19	8	8	24	14	13	10
Light vehicles	% of vehicles in fatal/serious crashes without current WoFs	14%	9%	9%	13%	0%	16%	11%	11%	8%	5%	4%	10%	8%	10%
Fatigue	fatal/serious injuries in fatigue/distraction crashes, per 100,000 popn.	18	5	12	13	4	11	11	21	4	10	12	10	14	17
Heavy vehicles	fatal/serious crashes involving HMTVs, 3yr avg, per 100m VKT	12	15	9	10	15	11	9	7	10	7	6	14	9	6
Walk/cycle	pedestrians and cyclists hospitalised >1d, per 100,000 population	5	10	6	9	6	9	3	9	6	6	3	9	6	7
Older users	persons 75+ years killed or seriously injured, per 100,000, 3yr avg.	53	42	58	37	25	37	59	60	27	12	61	66	90	83
Restraints	occupant deaths, restraints not worn, last 3 yrs, per 100,000 popn.	4.0	0.6	3.0	2.5	3.5	1.7	1.2	1.6	0.6	1.2	5.1	1.3	1.7	3.1