

Wellington regional works pipeline – 2025 - 2027

Wellington – 14 October 2025

In partnership with ACE NZ and
CCNZ

Agenda

- Introduction
- NZTA presentations - pipeline and sub-contractor / consultant opportunities:
 - Ōtaki to north of Levin (Ō2NL)
 - SH2 Melling Transport Improvements
 - Transmission Gully

NZTA introduction

Cate Quinn, National Manager Portfolio
and Standards

Greater Wellington 2024-27 NLTP summary

- A total of \$3.3 billion is forecast to be invested in Greater Wellington in the 2024-27 NLTP.
- This investment focuses on building greater resilience into the network with improvements to both the roading network and public transport system.
- Today, we'll update you on opportunities within the next 12 – 24 months for 3 key projects:
 - Ōtaki to North of Levin (Ō2NL)
 - Melling
 - Transmission Gully.



Ōtaki to North of Levin (Ō2NL)

Glen Prince, Project Director

Ōtaki to North of Levin (Ō2NL)

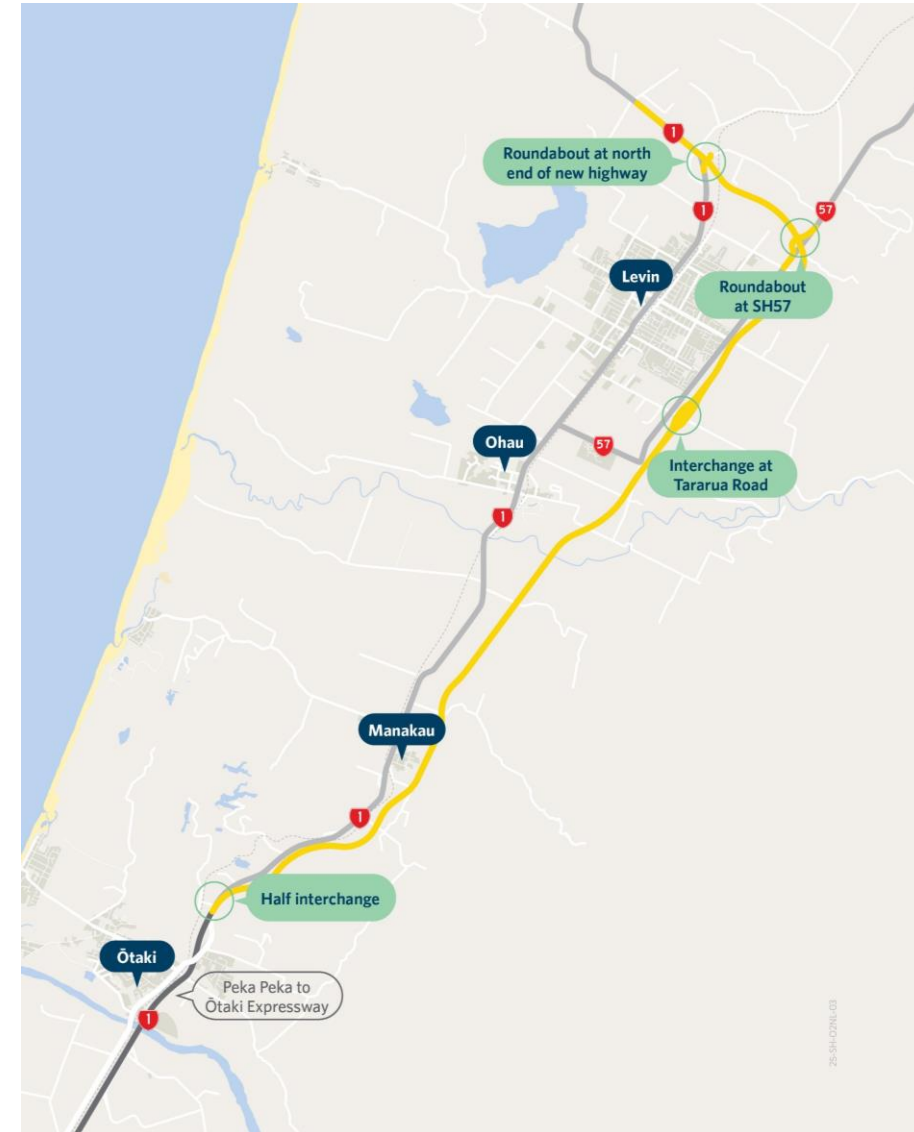
- Glen Prince, NZTA Project Director:
glen.prince@o2nl.nz
- Tim Watterson, Alliance Project Director (North):
tim.watterson@o2nl.nz
- Hugh Milliken, Alliance Project Director (South):
hugh.milliken@o2nl.nz



www.nzta.govt.nz/o2nl

Ōtaki to North of Levin (Ō2NL)

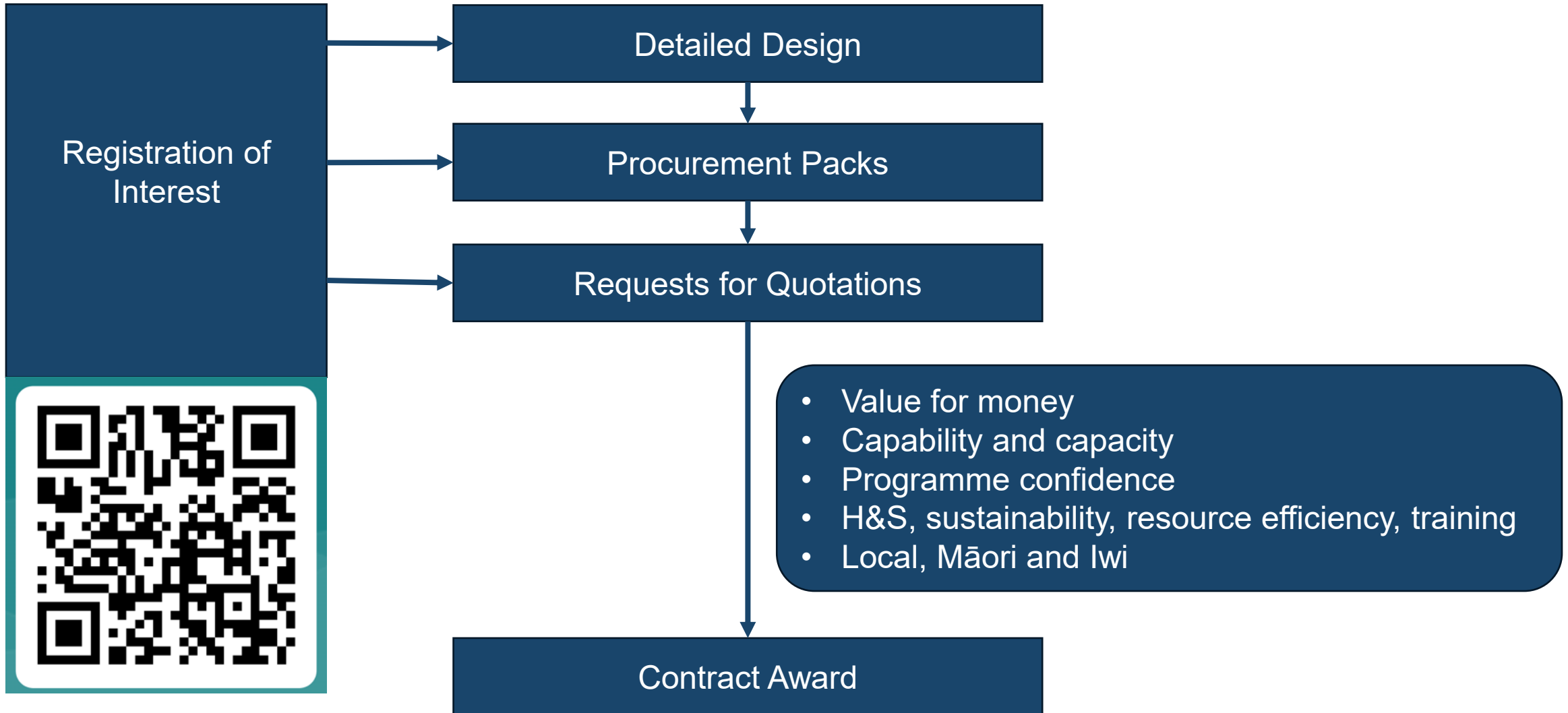
- Dual Alliance Model (North and South – 12kms each)
 - North: Fulton Hogan, HEB, WSP and Aurecon
 - South: Downer, McConnell Dowell, Beca and T+T
- 24kms: 21kms – 4 lanes, 3kms – 2 lanes (circa \$1.5b)
- Shared user path north to south
- Grade separated interchange at Tararua Road
- Half interchange north of Ōtaki
- North Island Main Trunk Line crossing
- Two roundabouts at the northern end
- 4 main watercourse crossings
- Tolled highway



Ōtaki to North of Levin (Ō2NL)

	2025				2026				2027				2028				2029			
	Q1	Q2	Q3	Q4	Q1	Q2	Q3	Q4	Q1	Q2	Q3	Q4	Q1	Q2	Q3	Q4	Q1	Q2	Q3	Q4
Access tracks, bypass roads, compounds																				
Erosion and sediment control, spoil areas																				
Culverts																				
Earthworks																				
Bridges and underpasses																				
Planting																				
Pavements and surfacing																				

Ōtaki to North of Levin (Ō2NL)



Ōtaki to North of Levin (Ō2NL)



Melling transport improvements

Matt Fairweather, Alliance Director

Melling transport improvements

- Matt Hunt – NZTA Project Director:
matthew.hunt@teawakairangi.co.nz
- Matt Fairweather – Alliance Project Director:
matt.fairweather@teawakairangi.co.nz



www.teawakairangi.co.nz



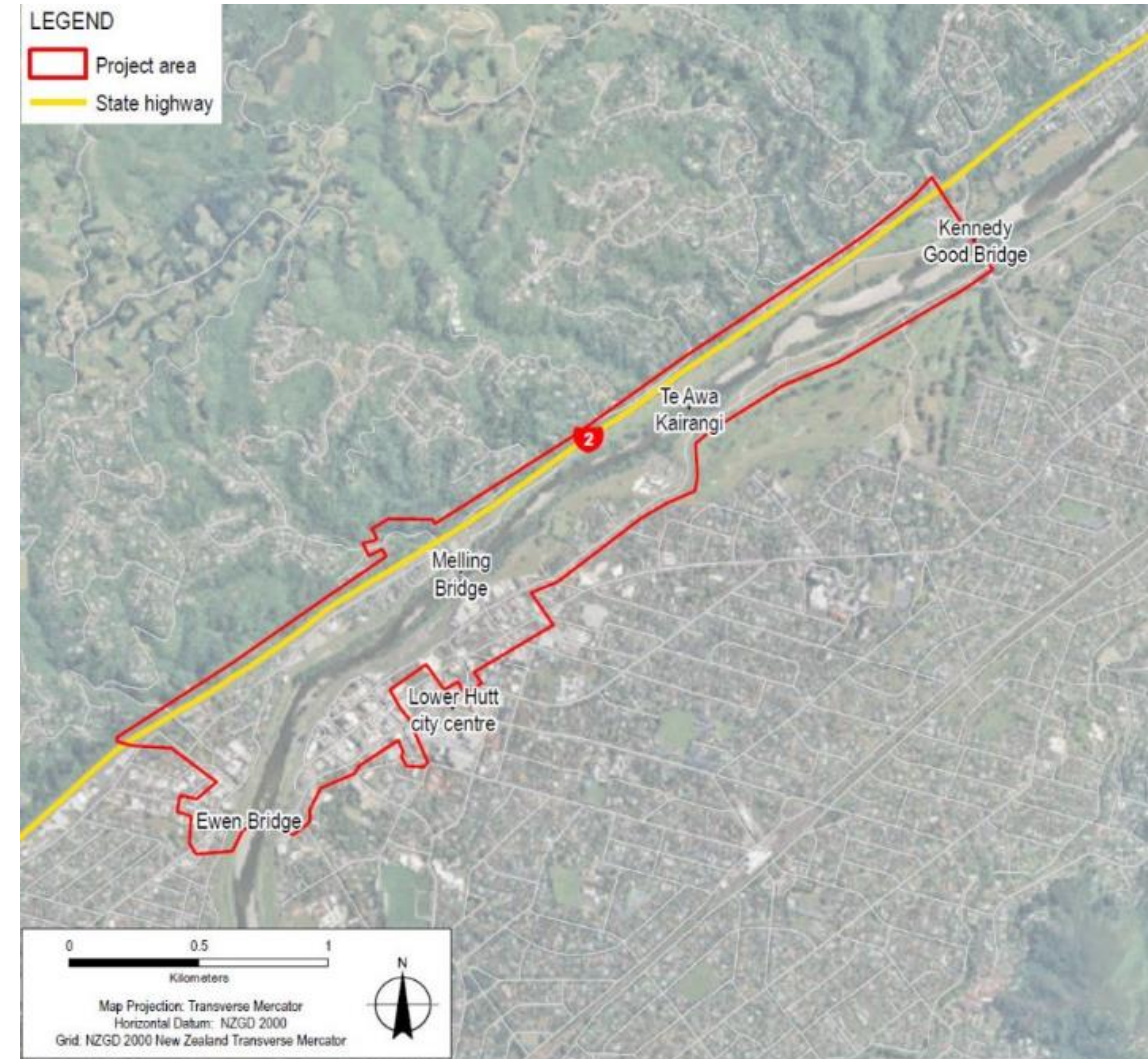
Melling transport improvements

The SH2 Melling Transport Improvements are part of the wider Te Wai Takamori o Te Awa Kairangi programme, which is delivering:

- **Flood protection and river restoration** (delivered by Greater Wellington)
- **Urban revitalisation of Te Awa Kairangi ki Tai** – Lower Hutt city centre, including a new City Link Bridge linking the new Melling Station and the CBD (delivered by Hutt City Council)
- **SH2 Melling Transport Improvements** include a new SH2 interchange to replace the Melling traffic lights; a new bridge over Te Awa Kairangi/Hutt River; and a new Melling train station 300m south of its current location, among other improvements

Delivered by:

- Alliance of NZ Transport Agency Waka Kotahi, AECOM and Fletcher Construction, in partnership with mana whenua
- Construction has started and will ramp up into early 2026.
- Full completion scheduled for **2032**.



Melling transport improvements

- Over the next two years, we'll be procuring drainage, utilities, labour, traffic management, and materials including structural and reinforcing steel, aggregate and concrete
- Our long construction timeline means more packages will be released as they're required
- Where possible, we will be using local labour, materials and businesses – including iwi-owned or affiliated
- Use this QR code to register your interest in working with the Alliance:



Melling transport improvements

How you can prepare your business for success:

- You must be a Limited Liability Company (LLC)
- Check your Health and Safety qualifications are up to date (the Alliance requires Tōtika)
- Consider how you would contribute to the Alliance's key result areas: Health, Safety and Wellbeing; Community at Heart; Best Value Solutions, and Enduring Partnerships
- We are also committed to achieving a Bronze Infrastructure Sustainability Council rating – how can you help us?
- Email us at procurement@teawakairangi.co.nz with any questions.

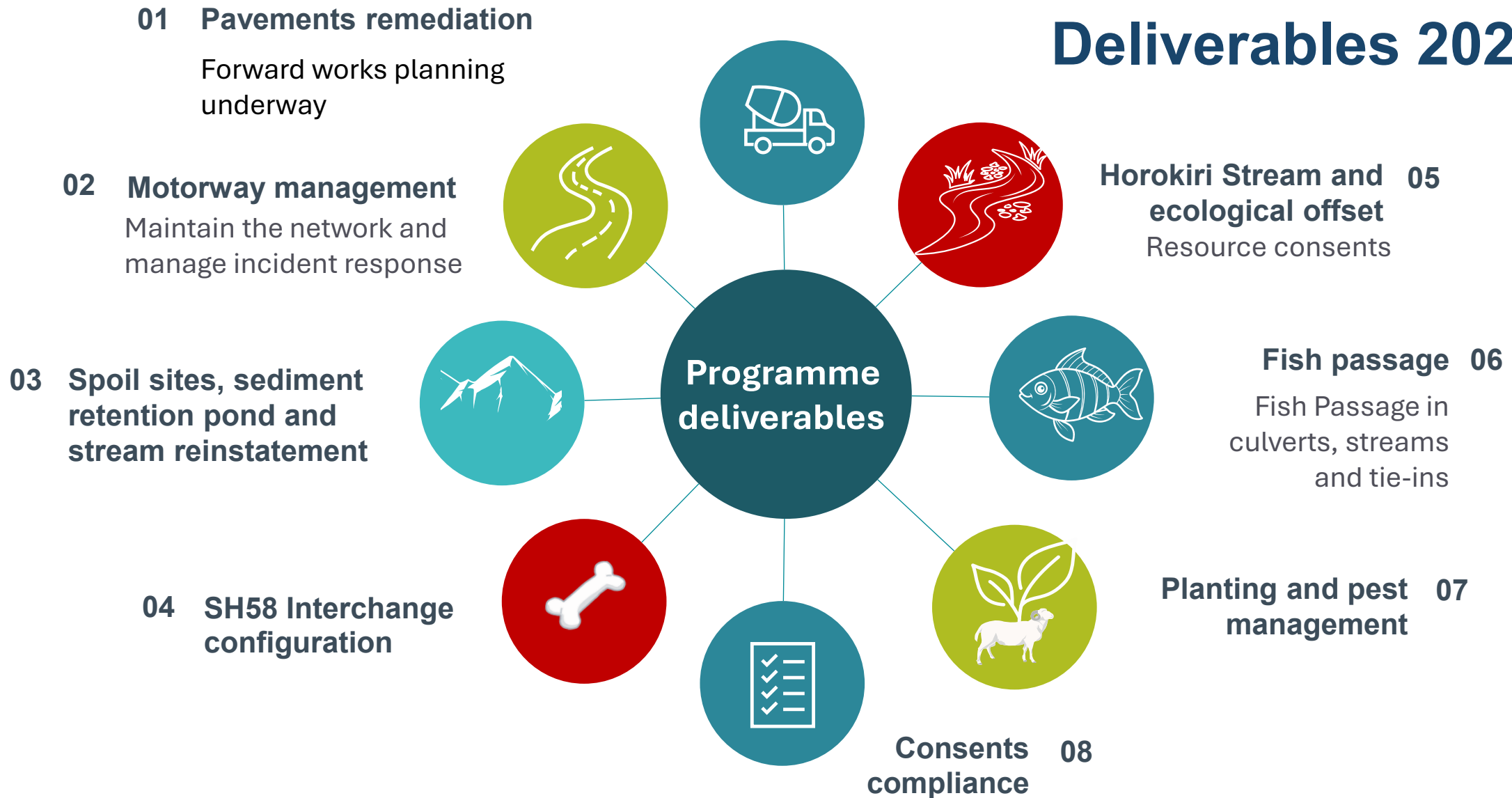
Transmission Gully

Mark Owen / Hoana Turia

Transmission Gully

- Mark Owen, Maintenance and Operations Regional Manager:
mark.owen@nzta.govt.nz
- Hoana Turia, Delivery Lead:
hoana.turia@nzta.govt.nz

Deliverables 2025/27



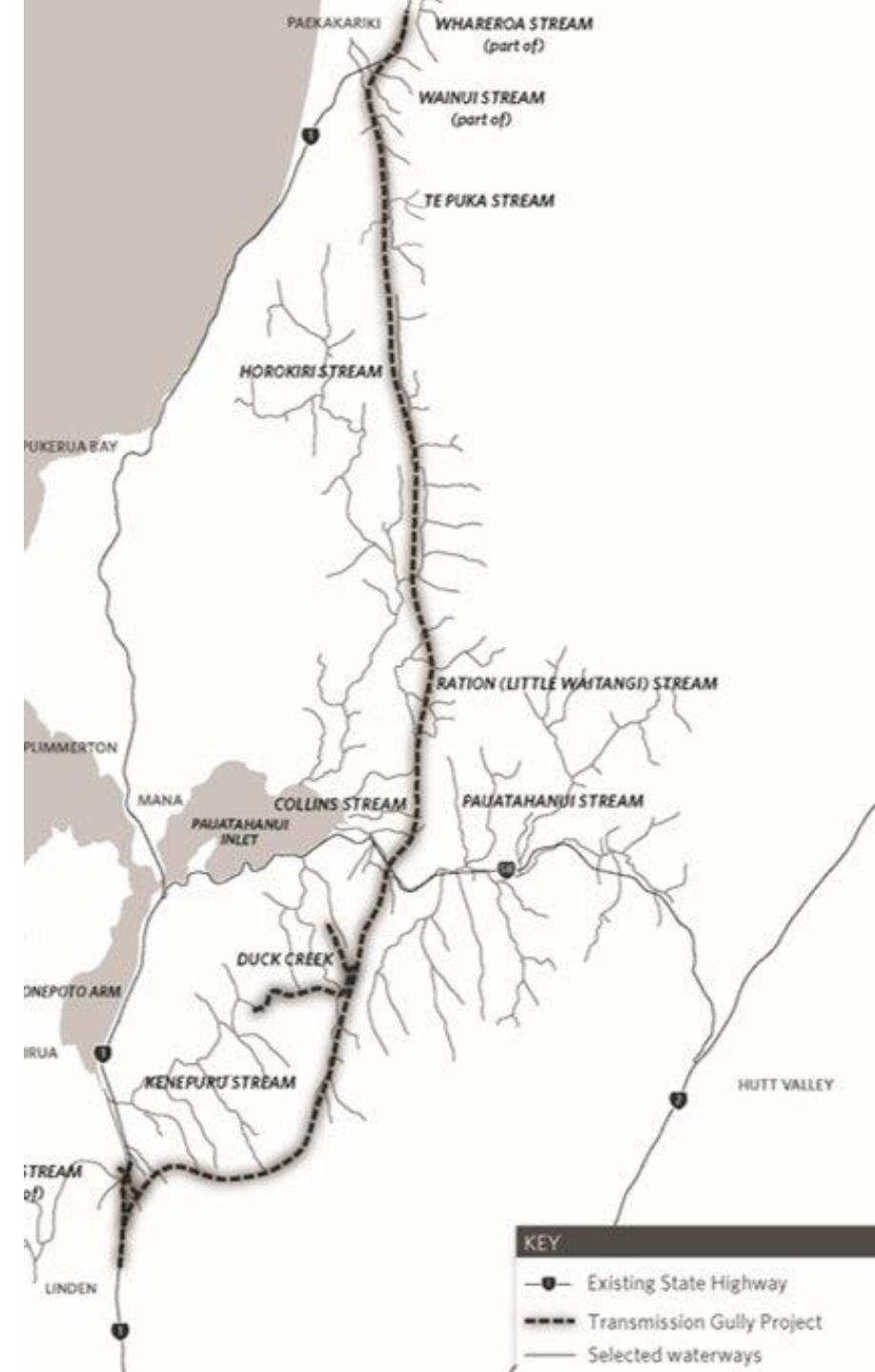
Property / Procurement / Intelligent Transport Systems

Transmission Gully

Various contractors are committed to this summer construction season on TG engaged through Ventia to assist with Capital Works Completion.

Potential civil construction opportunities known for summer construction 26/27:

- Fill site completion and sediment retention pond decommissioning
- Mackays Level Crossing (Pedestrian, Equestrian, cyclist maze)
- Accessway and shared path works at Lanes Flat
- Stream works
- Pavement, drainage and resurfacing.



Q&A

Wellington Region Pipeline overview

Projects above \$2M

Indicative and subject to change

Type	Name	Activity	Pipeline*
Efficiency	Transmission Gully	Highway Completion	Construction 25/26
	<i>RONs Otaki to North of Levin (predominantly in Manawatu /Whanganui region)</i>	<i>Highway Construction</i>	<i>Construction 25/26</i>
Efficiency and Resilience	RoRS SH2 Melling Efficiency and Safety Improvement	Interchange and bridge	Construction 25/26
Safety	SH2 Hughes Line - Carterton	Safety works	Construction 26/27
Type	Name	Activity	Inflight
Resilience, Walking and Cycling	Ngauranga to Petone Walking and Cycling	Resilience, Walking and Cycling	Construction
Walking and Cycling	Petone to Melling Walking and Cycling Link	Walking and Cycling	Completion and close out
Efficiency	RONs SH 1 Wellington Improvements	Business Case	Investment case
	RONs Petone To Grenada Link Road and CVL	Business Case	Investment case
Safety	SH2 Hutt Valley- Fergusson to Whakatiki St	Safety works	Completion and close out
	Peka Peka to Otaki Revocation	Safety works	Construction
	RoRS SH58 Safety Improvements	Safety works	Construction
	Weigh Right (MacKays) - Commercial Vehicle Safety Centre (CVSC)	Traffic Management Facility	Construction
	SH2 Masterton to Carterton	Safety works	Completion and close out

Projects below \$2M

Indicative and subject to change

Type	Name	Activity	Pipeline*
Efficiency	Wellington System Plan	Programme Business Case	26/27
Type	Name	Activity	Inflight
Reactive	Wellington Regional Reactive	Signs and markings	Inflight (Ongoing)
Associated improvements	Wellington Network (multiple)	Small safety works, drainage	Inflight (various stages)
Safety	SH2 Hutt Valley, Moonshine Road Intersection	Intersection	Inflight (Construction 25/26)
	Wellington Safety Improvements – Schools	Speed	Inflight (Construction 25/26)
	SH59 Whitford Brown Intersection Stage 2	Intersection	Inflight (Construction 25/26)
Resilience	SH1, Landslip below 16 Japonica Grove	Overslip	Inflight (Construction completion and close out)
	SH1, Westchester Drive Bridge, South bound onramp slip	Overslip	Inflight (Construction 25/26)
	SH59 Three Sister Rockface rockfall	Rockfall	Inflight((Construction completion and close out)
	SH2 Korokoro Stream Debris trap	Flooding	Inflight (Construction 25/26))
	SH2 Rockface – Te Marua and Birchville Park	Rockfall	Inflight (Pre-implementation, Construction TBC)