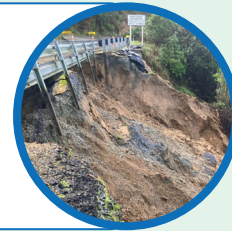




Tākaka Hill

Cooks Underslip, Goodalls Straight, Drummonds Slump, Riders Slip, The Pines



Rocks Rd over slip, cliff destabilisation, rockfall

Kohatu a number of active sites on the State Highway in this area



Coal Creek scour just south of the Owen River uneven road surface



Spooners Hill treefall

North Road washout



Dellows Bluff phase two resilience work

Kawatiri/Glenhope two small washouts

Westport

Murchison