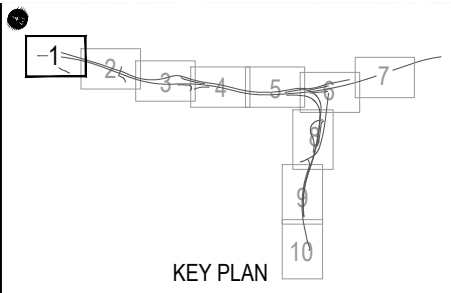
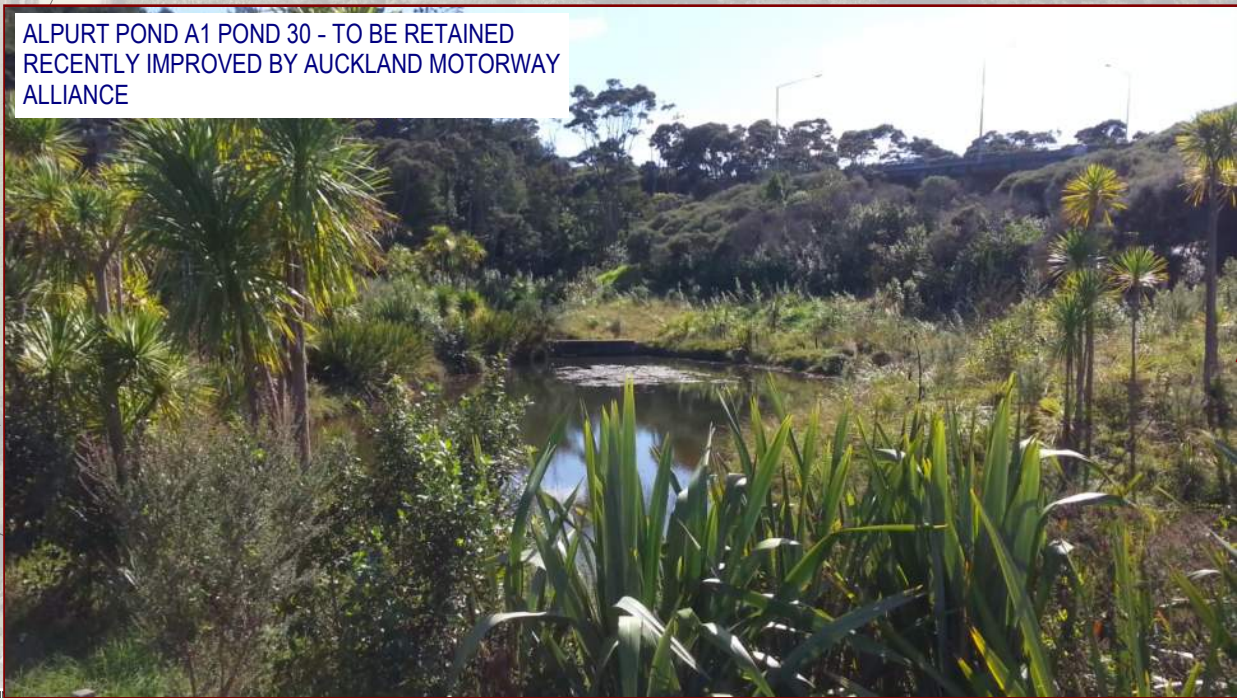


ALPURT POND A1 POND 29 - TO BE RETAINED



ALPURT POND A1 POND 30 - TO BE RETAINED
RECENTLY IMPROVED BY AUCKLAND MOTORWAY ALLIANCE



CONTAINS 2016 AERIAL IMAGERY SOURCED FROM NZ TRANSPORT AGENCY UNDER CREATIVE COMMONS 3.0 NEW ZEALAND (BY)

CONTAINS 2016 AERIAL IMAGERY SOURCED FROM NZ TRANSPORT AGENCY UNDER CREATIVE COMMONS 3.0 NEW ZEALAND (BY)

CLIENT



STORMWATER SITE VISIT PHOTOS

15 APRIL 2016 & 13 JULY 2016

TAKEN BY DAVID HUGHES, MATTHEW YU & TALLULAH KAEGI



CONTAINS 2016 AERIAL IMAGERY SOURCED FROM NZ TRANSPORT AGENCY UNDER CREATIVE COMMONS 3.0 NEW ZEALAND (BY)

CONTAINS 2016 AERIAL IMAGERY SOURCED FROM NZ TRANSPORT AGENCY UNDER CREATIVE COMMONS 3.0 NEW ZEALAND (BY)

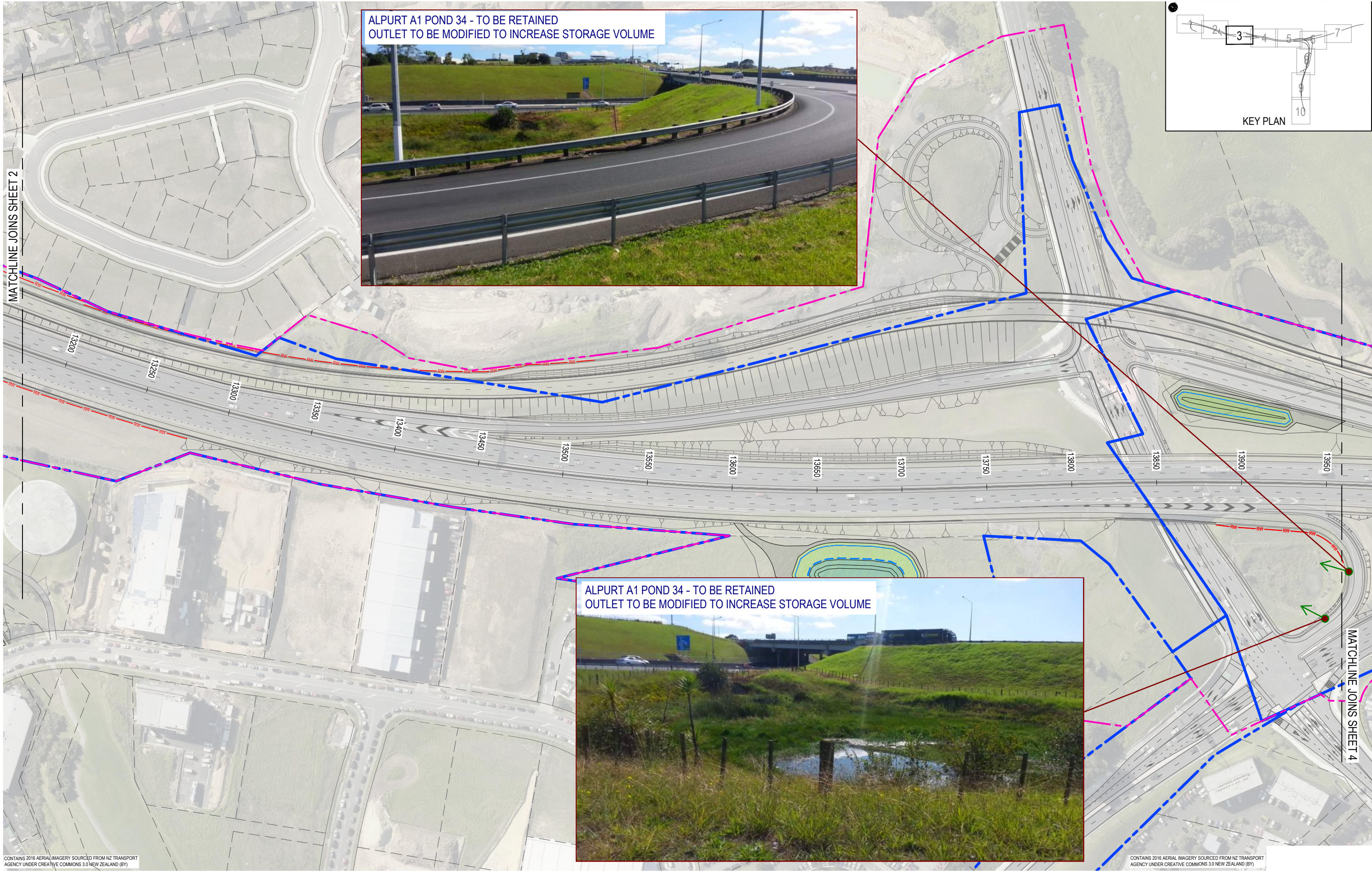
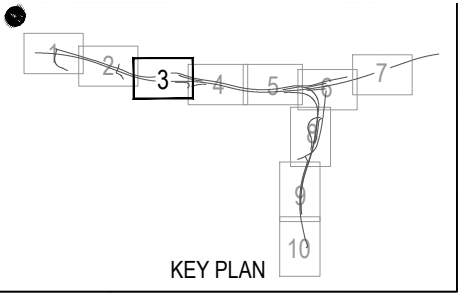
CLIENT



STORMWATER SITE VISIT PHOTOS

15 APRIL 2016 & 13 JULY 2016

TAKEN BY DAVID HUGHES, MATTHEW YU & TALLULAH KAEGI



MATCHLINE JOINS SHEET 2

MATCHLINE JOINS SHEET 4

CONTAINS 2016 AERIAL IMAGERY SOURCED FROM NZ TRANSPORT AGENCY UNDER CREATIVE COMMONS 3.0 NEW ZEALAND (BY)

CONTAINS 2016 AERIAL IMAGERY SOURCED FROM NZ TRANSPORT AGENCY UNDER CREATIVE COMMONS 3.0 NEW ZEALAND (BY)

CLIENT

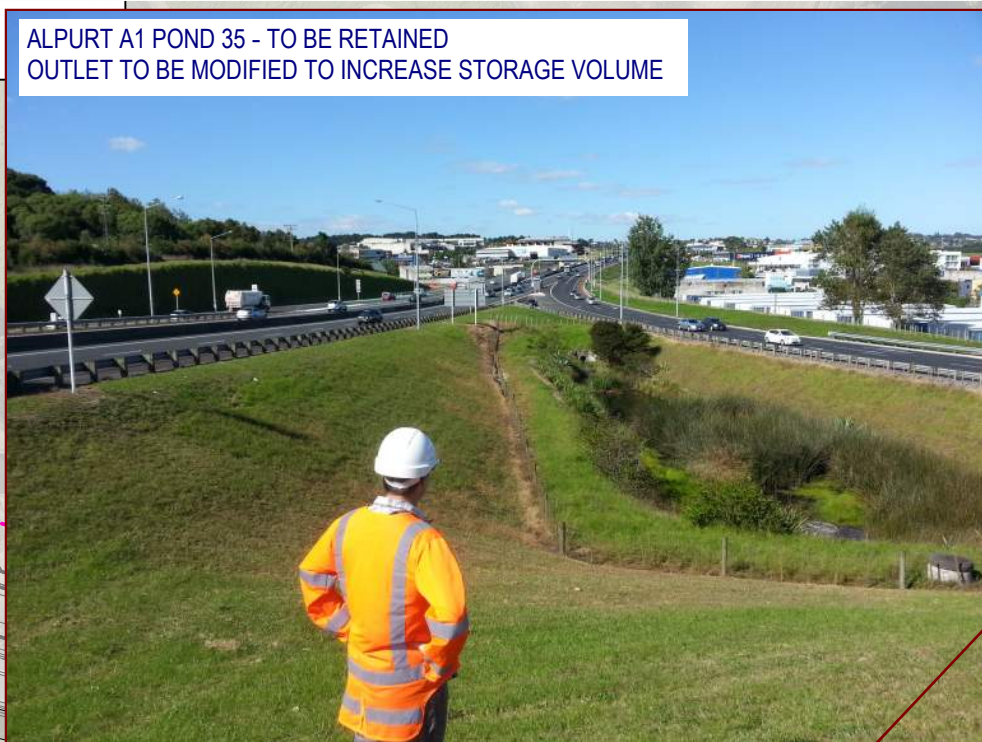


STORMWATER SITE VISIT PHOTOS

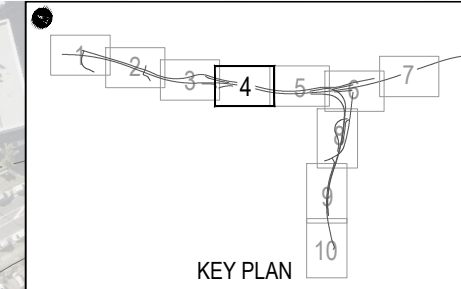
15 APRIL 2016 & 13 JULY 2016

TAKEN BY DAVID HUGHES, MATTHEW YU & TALLULAH KAEGI

ALPURT A1 POND 35 - TO BE RETAINED
OUTLET TO BE MODIFIED TO INCREASE STORAGE VOLUME



ALPURT A1 POND 35 - TO BE RETAINED
OUTLET TO BE MODIFIED TO INCREASE STORAGE VOLUME



CU-EX-06 OUTFALL - TO BE RETAINED
NO WORKS PROPOSED

CONTAINS 2016 AERIAL IMAGERY, SOURCED FROM NZ TRANSPORT AGENCY UNDER CREATIVE COMMONS 3.0 NEW ZEALAND (BY)

CLIENT



STORMWATER SITE VISIT PHOTOS
15 APRIL 2016 & 13 JULY 2016
TAKEN BY DAVID HUGHES, MATTHEW YU & TALLULAH KAEGI

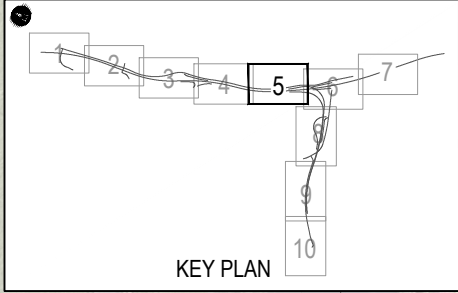
MORO POND - ARTIFICIAL WATERCOURSE TO BE PIPED



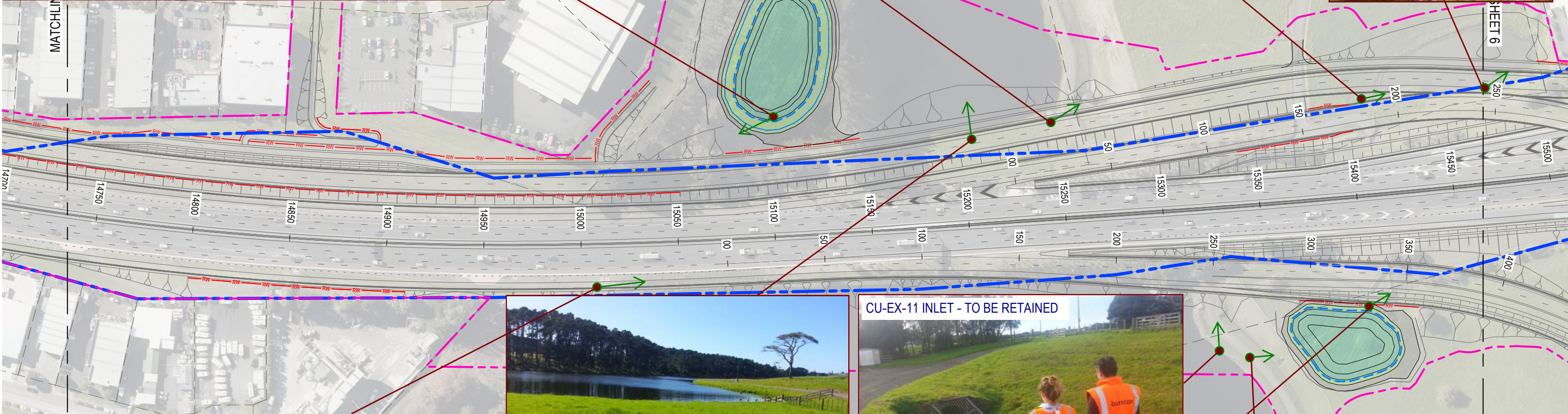
BELLMOUTH STRUCTURE - TO BE RELOCATED



ARC REFUSE POND - TO BE REMOVED



ARC REFUSE POND - INLET & OUTLET



STORMFILTER AND DETENTION TANK - TO BE REMOVED



WATERCARE POND 2



CU-EX-11 INLET - TO BE RETAINED



CU-EX-12 OUTLET - CULVERT TO BE EXTENDED



NEW OUTLET LOCATION OF EXTENDED CU-EX-12

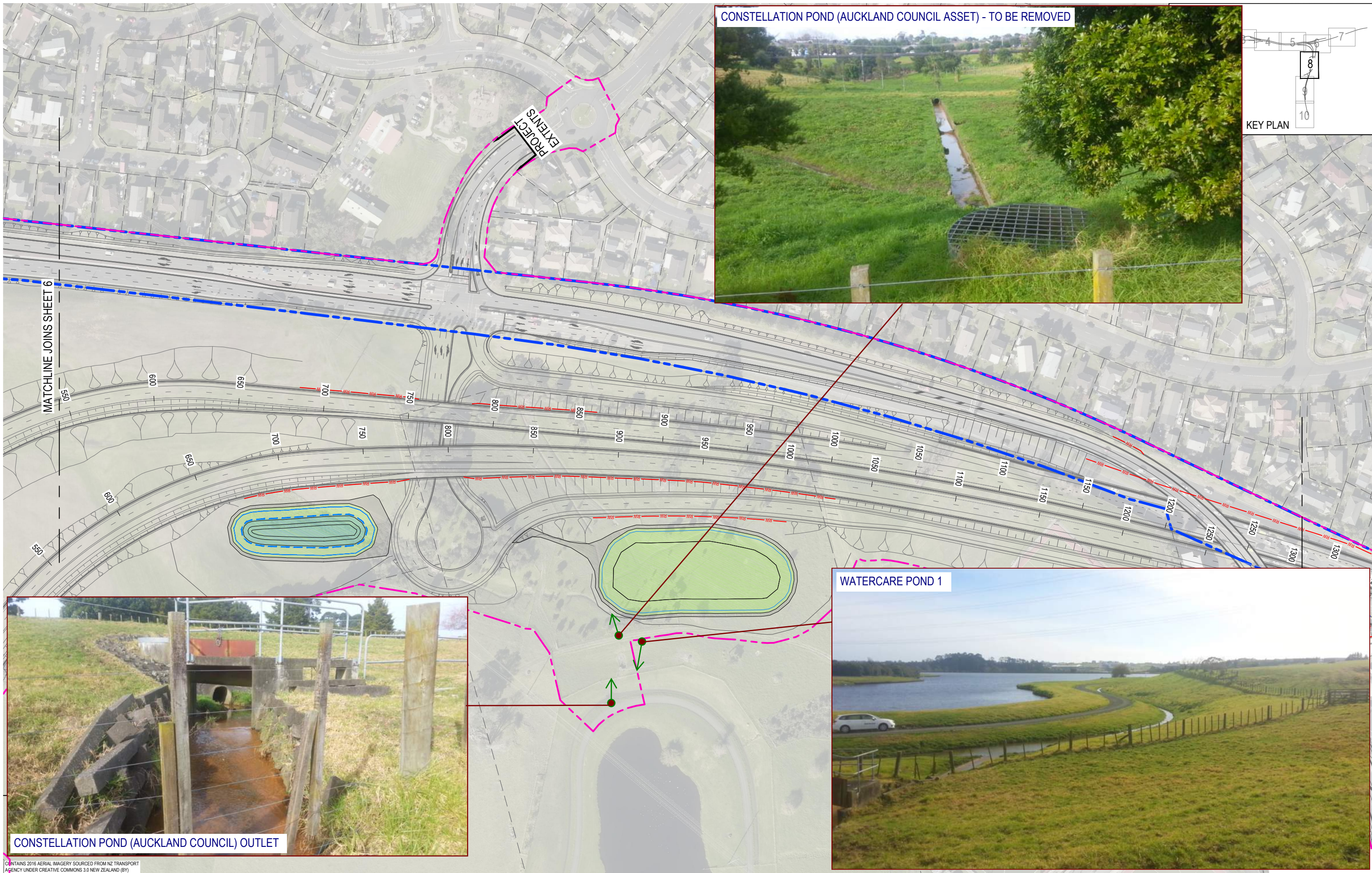
CLIENT



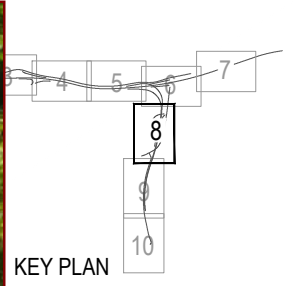
STORMWATER SITE VISIT PHOTOS

15 APRIL 2016 & 13 JULY 2016

TAKEN BY DAVID HUGHES, MATTHEW YU & TALLULAH KAEGI



CONSTELLATION POND (AUCKLAND COUNCIL ASSET) - TO BE REMOVED



MATCHLINE JOINS SHEET 6

PROJECT EXTENTS

WATERCARE POND 1



CONSTELLATION POND (AUCKLAND COUNCIL) OUTLET



CONTAINS 2016 AERIAL IMAGERY SOURCED FROM NZ TRANSPORT AGENCY UNDER CREATIVE COMMONS 3.0 NEW ZEALAND (BY)

CLIENT



STORMWATER SITE VISIT PHOTOS
 15 APRIL 2016 & 13 JULY 2016
 TAKEN BY DAVID HUGHES, MATTHEW YU & TALLULAH KAEGI



ROOK RESERVE - PROPOSED WETLAND LOCATION



MATCHLINE JOINS SHEET 8

PROJECT EXTENTS

PROJECT EXTENTS

CU-EX-14 OUTLET - TO BE RETAINED
NO WORKS PROPOSED

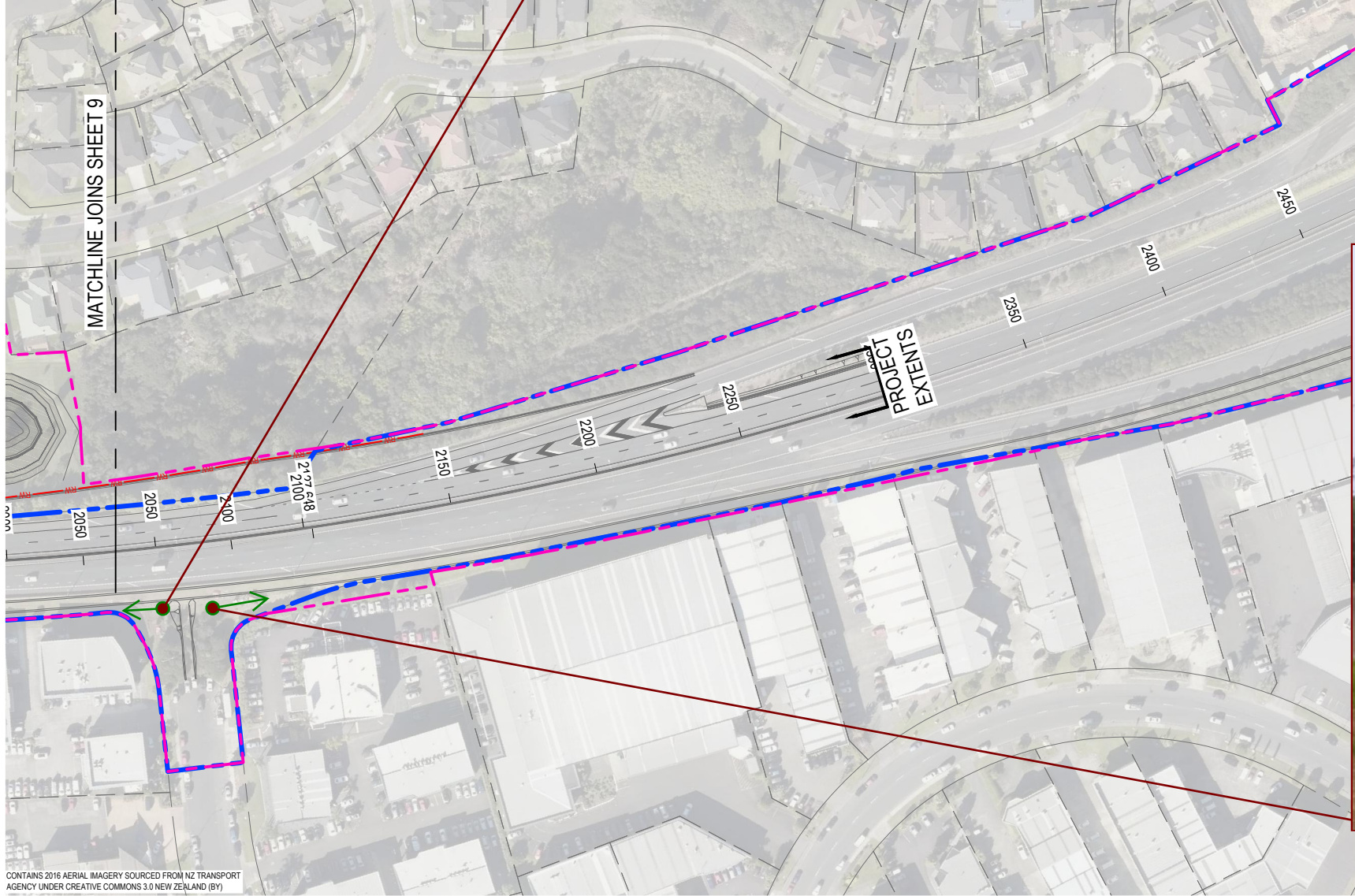
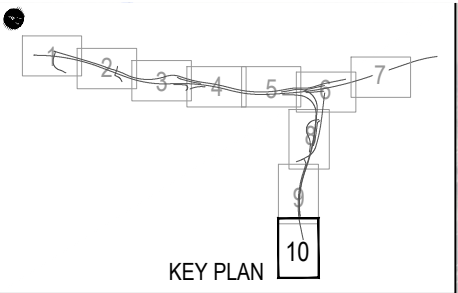


CU-EX-14 OUTLET - TO BE RETAINED
NO WORKS PROPOSED

CONTAINS 2016 AERIAL IMAGERY SOURCED FROM NZ TRANSPORT AGENCY UNDER CREATIVE COMMONS 3.0 NEW ZEALAND (BY-NC-ND)

CLIENT

PROPOSED SH18 SUP - EXISTING CHANNEL TO BE REPLACED WITH CONCRETE CUT-OFF CHANNEL



PROPOSED SH18 SUP - EXISTING CHANNEL TO BE REPLACED WITH CONCRETE CUT-OFF CHANNEL



CONTAINS 2016 AERIAL IMAGERY SOURCED FROM NZ TRANSPORT AGENCY UNDER CREATIVE COMMONS 3.0 NEW ZEALAND (BY)

CLIENT



STORMWATER SITE VISIT PHOTOS
15 APRIL 2016 & 13 JULY 2016
TAKEN BY DAVID HUGHES, MATTHEW YU & TALLULAH KAEGI