



Appendix E

Information Day Display material



This page has been intentionally left blank.

THE NORTHERN CORRIDOR IMPROVEMENTS PROJECT

The Northern Corridor Improvements Project will provide the last link in the Western Ring Route, connecting the north with the west along SH1 and SH18. Major benefits of completing the Northern Corridor Improvements Project include:

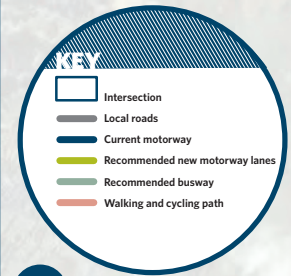
- A second high quality, high capacity route for north-south travel, providing an alternative access through Auckland that avoids the central city.
- A route for freight movements from Northland.
- Providing for and managing local road pressure in Albany, the North Harbour industrial area and other areas further north and north-west.
- Improving public transport options by extending the successful Northern Busway.
- Over 5kms of new safe shared cycling and walking facilities.

HAVE YOUR SAY

Please let us know your thoughts by completing a feedback form, reply to our online form or write your comments and stick them up on the wall.

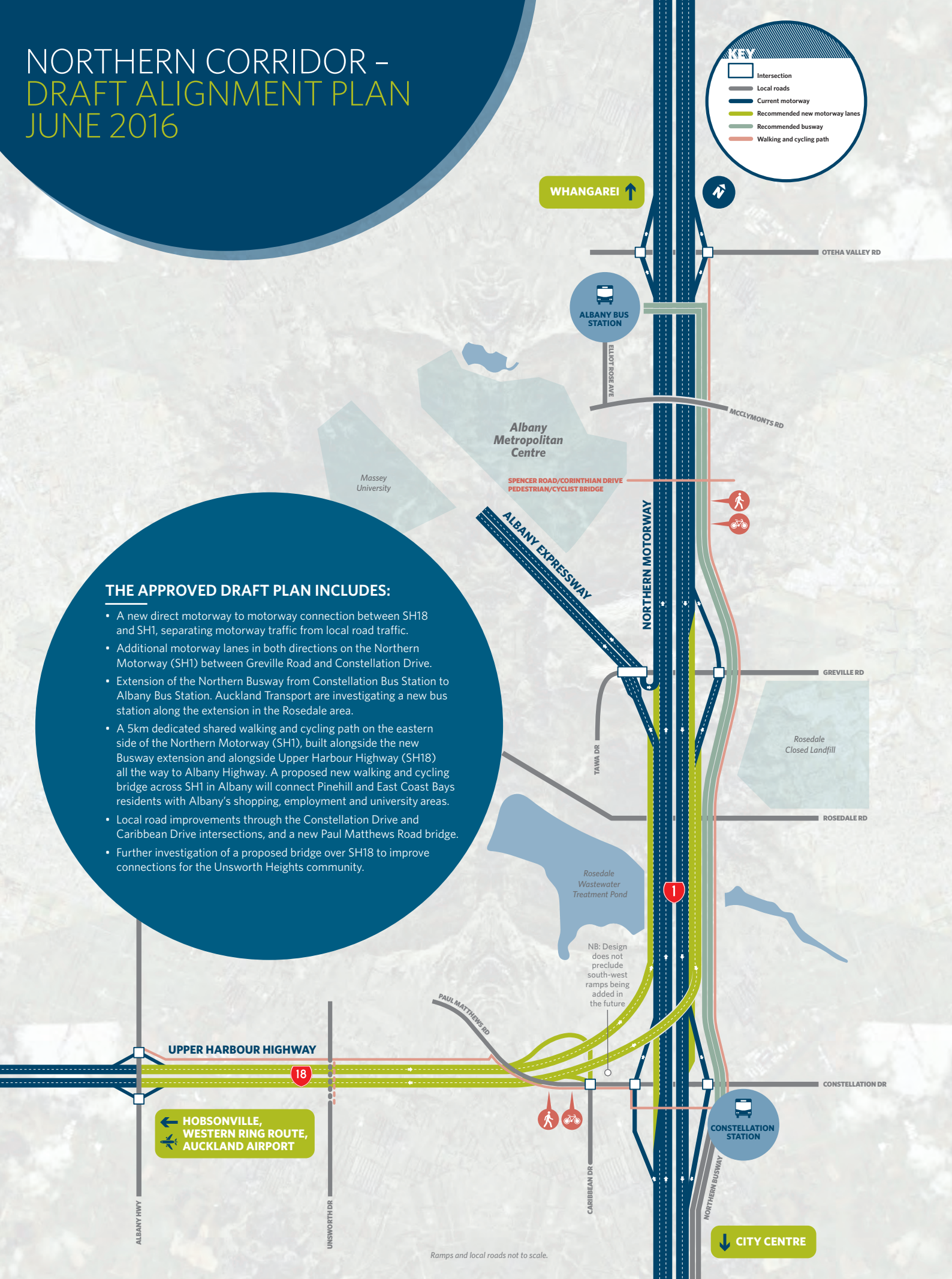


NORTHERN CORRIDOR – DRAFT ALIGNMENT PLAN JUNE 2016



THE APPROVED DRAFT PLAN INCLUDES:

- A new direct motorway to motorway connection between SH18 and SH1, separating motorway traffic from local road traffic.
- Additional motorway lanes in both directions on the Northern Motorway (SH1) between Greville Road and Constellation Drive.
- Extension of the Northern Busway from Constellation Bus Station to Albany Bus Station. Auckland Transport are investigating a new bus station along the extension in the Rosedale area.
- A 5km dedicated shared walking and cycling path on the eastern side of the Northern Motorway (SH1), built alongside the new Busway extension and alongside Upper Harbour Highway (SH18) all the way to Albany Highway. A proposed new walking and cycling bridge across SH1 in Albany will connect Pinehill and East Coast Bays residents with Albany's shopping, employment and university areas.
- Local road improvements through the Constellation Drive and Caribbean Drive intersections, and a new Paul Matthews Road bridge.
- Further investigation of a proposed bridge over SH18 to improve connections for the Unsworth Heights community.



FEEDBACK FROM OUR PREVIOUS CONSULTATION

HAVE YOUR SAY

Please let us know your thoughts on our latest plan – pick up a feedback form, reply to our online form or write your comments and stick them up on the wall.

Thank you for the overwhelming amount of feedback we received during our previous round of community consultation last year. Here's an overview of what you told us and how this has been used to help shape the current plans.

YOU TOLD US...

SO WE HAVE...

"Make the Busway Extension a priority to make buses faster and more efficient"

The Northern Busway will be extended all the way to Albany Bus Station.

"A new bus station in Rosedale would be good"

Auckland Transport is investigating a new station and Park & Ride options in Rosedale.

"More walking and cycling paths"

It's now confirmed that the project will include over 5kms of shared walking and cycling paths alongside SH1 and the Busway Extension from Oteha Valley Road down to Constellation Drive and then across and along SH18, joining up to the new paths on Albany Highway.

A new shared walking and cycling bridge is proposed to connect Spencer Road and Corinthian Drive and will be one of the first features to be constructed as part of the project.

"I'm worried the traffic on SH18 and at the Constellation Interchange is going to be a problem, even with this project"

As well as building a new motorway to motorway connection between SH1 and SH18 to reduce congestion on the local roads, we are working on local road improvements including reconfiguring Caribbean and Paul Matthews intersections and improving traffic light phasing to reduce waiting times.

We will remove the single lane 'give way' lane on the northbound off-ramp turning westward and replace it with traffic lights and two left turning lanes, providing more priority for people heading west.

"I like the option of Paul Matthews as a bridge in its current location, rather than moving draft"

We have chosen this option and it is now included in the plan.

"Consider a bridge over the new SH18 for the Unsworth Heights community"

We are still investigating options for a proposed bridge to connect the Unsworth Heights community to Omega Street. Safety and community issues and opportunities are currently being assessed. We'd appreciate your feedback so please leave your comments.



ENVIRONMENTAL, URBAN DESIGN & LANDSCAPE

A key part of the Northern Corridor Improvements project involves looking at ways we can enhance the surrounding environment by incorporating urban design and landscaping features, taking into consideration the history, heritage and cultural significance of the area. Features include planting and landscaping, enhancing structures such as bridges and retaining walls, and improving stormwater treatment and waterways.

HAVE YOUR SAY

What urban design and landscape opportunities do you think the project provides?

Cultural significance

Local iwi has significant ancestral links to the project area, including Lucas Creek. Traditional Ara (pathways) linked Tikapa Moana (Hauraki Gulf) with the Manukau and Kaipara Harbours, and the Waitakere Ranges. There is evidence of a trail from Te Oneroa o Kahu (Long Bay beach), over the cliffs to Okura. The trails from Long Bay connected with the Oteha Valley and continuous ridgeways such as the one along Lonely Track Road, and with the Okura River and Lucas Creek. These trails were used for seasonal fishing excursions and communication links and by iwi groups exercising their ahi kaa (occupational rights) over the lands and waters.

The project team will continue to work with iwi groups to work through environmental and urban design elements.



Waterways

SH1 and our project area runs directly through the Rosedale Wastewater Treatment Pond and we are working closely with Watercare to further enhance this area and positively contribute to the natural environment.

Other existing waterways within the area are the Oteha Stream, Lucas Creek and tributaries of the Alexandra Stream in the vicinity of Upper Harbour Highway.

Stormwater treatment methods are currently being investigated to manage water run-off, and may include installing soft structures such as ponds, swales or wetlands.

A swale or bio-swale, ponds and wetlands are landscaping elements designed to remove pollutants and silt from water run-off before it enters our waterways.



Bridges and structures

This project includes the construction of many new bridges, underpasses, structures and retaining walls. Wherever possible, we will 'green' structures, which means incorporating planting to reinforce the transitional theme that brings the rural hinterland into the urban environment.

Noise and retaining walls will be complementary to both their landscape adjacent to the corridor, and with the family of highway structures.

The Transport Agency regularly works with local iwi to develop themes and artwork to 'soften' hard surfaces like concrete walls.

A key bridge feature on this project is the Spencer Road Bridge in Albany, a shared walking and cycling path linking residential and commercial areas, and offering great views of Rangitoto Island and Auckland City.



Planting and landscaping

Planting and landscaping will be used to enhance the existing natural environment. Whenever possible, native plants, shrubs and trees will be incorporated to contribute to biodiversity, enhance the natural environment and promote eco-systems and habitats for birds and wildlife.



North-West Wildlink

Auckland Council and Forest & Bird's North-West Wildlink project aims to connect and enhance natural areas, including open spaces, stream banks, esplanade reserves and backyards along a broad 'green corridor' from the Waitakere Ranges to Whangaparaoa Peninsula, providing safe routes and refuges for native plants and animals.

State Highways 16 and 18 are already providing a strategic habitat along the Wildlink and it is hoped that the Northern Corridor will continue along this 'green corridor'.



Connectivity

A key urban design feature of this project is connectivity - connecting local roads, and providing walking and cycle facilities to connect the surrounding communities and make access in and around this area easier.

NORTHERN BUSWAY EXTENSION

The NZ Transport Agency is working closely with Auckland Transport on an extension of the hugely successful Northern Busway from Constellation Bus Station through to Albany Bus Station. The Busway will run in both directions alongside the citybound motorway lanes and will connect over to Albany Bus Station via a bridge just north of McClymonts Road. A new 5km shared walking and cycling path will run alongside it.

Auckland Transport are also investigating a new bus station and Park & Ride options at Rosedale. It is envisaged that, like Smales Farm, this proposed station will be a destination station for the many people who work, go to school or attend sporting activities in Rosedale. It will also provide another station to catch Northern Express services to and from the city. As part of this, Auckland Transport will also look at local road improvements and additional feeder bus services that could help transport people in and out of the station from East Coast Bays, North Harbour and Rosedale.



HAVE YOUR SAY

What do you like or dislike about this proposed station? If you were going to use this station, where would you be travelling to and from?

18

Upper Harbour Highway

NORTHBOUND
CITYBOUND

Albany Expressway

ALBANY STATION

McClymonts Road

Greville Road

PROPOSED ROSEDALE STATION

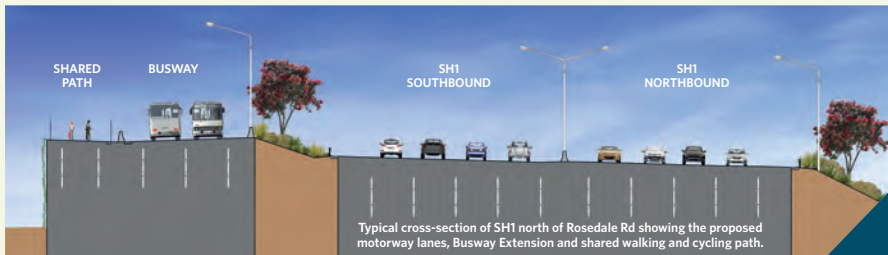
Rosedale Road

Constellation Drive

CONSTELLATION STATION

KEY

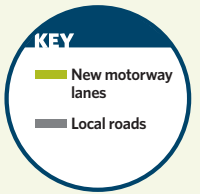
- Northern Busway Extension
- Walking & Cycling path



Typical cross-section of SH1 north of Rosedale Rd showing the proposed motorway lanes, Busway Extension and shared walking and cycling path.

LOCAL ROAD UPGRADES AS A RESULT OF NORTHERN CORRIDOR IMPROVEMENTS

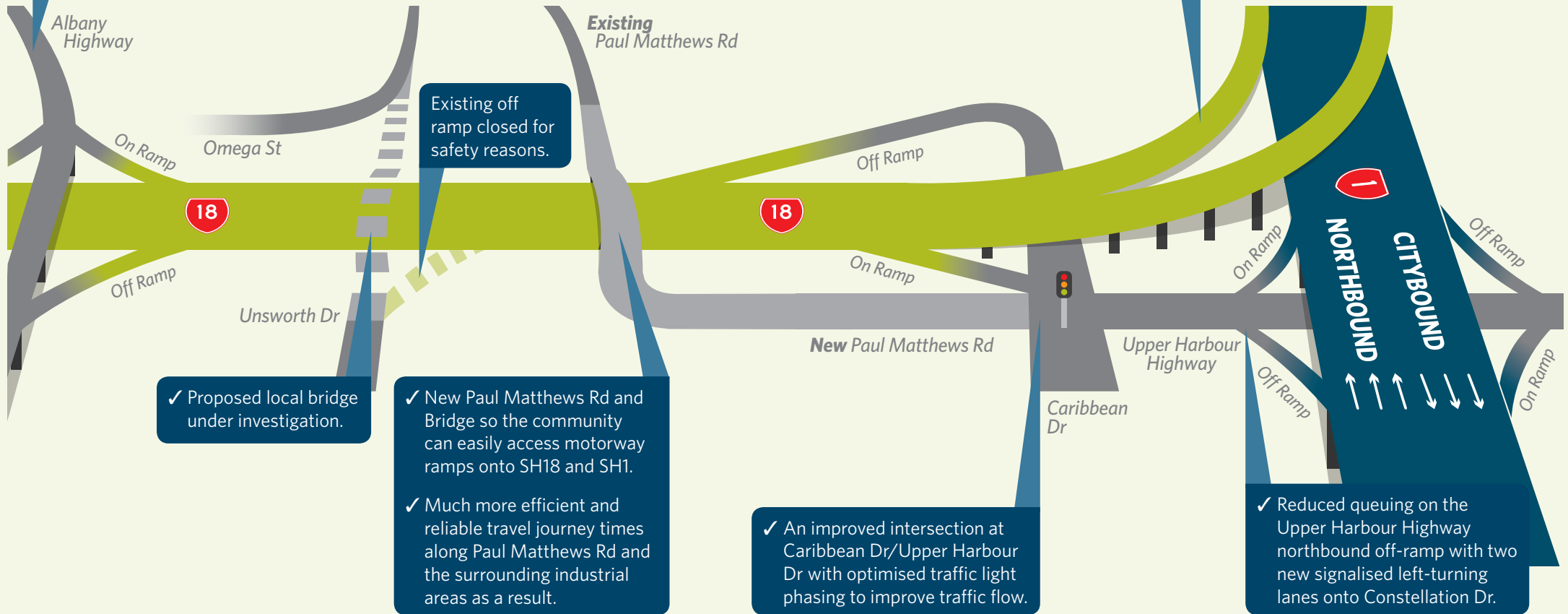
UPPER HARBOUR HIGHWAY INTERCHANGE & CONSTELLATION DRIVE



- ✓ Less traffic on Albany Highway due to the new motorway to motorway connection between SH1 and SH18.
- ✓ Traffic flows and delays are predicted to improve, helping to maintain a safer environment for the community, schools and the industrial area.

- ✓ A new direct motorway to motorway connection between SH1 and SH18 will reduce the number of vehicles using the Upper Harbour Highway Interchange, Constellation Dr and other local roads.

- ✓ Safer and improved connections for pedestrians and cyclists passing through the Upper Harbour Highway Interchange and Constellation Dr.



Existing off ramp closed for safety reasons.

✓ Proposed local bridge under investigation.

✓ New Paul Matthews Rd and Bridge so the community can easily access motorway ramps onto SH18 and SH1.

✓ Much more efficient and reliable travel journey times along Paul Matthews Rd and the surrounding industrial areas as a result.

✓ An improved intersection at Caribbean Dr/Upper Harbour Dr with optimised traffic light phasing to improve traffic flow.

✓ Reduced queuing on the Upper Harbour Highway northbound off-ramp with two new signalised left-turning lanes onto Constellation Dr.

THE NORTHERN CORRIDOR IMPROVEMENTS PROJECT



HAVE YOUR SAY

Please let us know your thoughts by writing your comments on post-it notes and sticking them up on this wall. Or fill out a feedback form and put it in the box.





This page has been intentionally left blank.