

# 1 Huntly project update

June 2016

## Winter works under way



Tauripiri Pass - northern side

The Fulton Hogan HEB Joint Venture has reached the end of its first earth-moving season at Huntly with about 20 per cent of the total earth works complete.

The earth-moving season runs from October 1 to April 30 each year. The contractor has approval from the Waikato Regional Council to continue with selected works over the winter months, as weather conditions allow. However, with the recent wet spell, the main focus for winter will shift to working on the project's nine bridges.

Project Director Tony Dickens says they have made excellent progress this season shifting almost 600,000 cubic metres of material and completing the access road almost the entire length of the 15.2km section. They have also completed enabling work including clearing trees, diverting streams and installing culverts ready for next season.

Large areas of the site have been stabilised with grass and hay mulch to minimise erosion. There are 110 decanting earth bunds, 18 sediment retention ponds and 60km of earth bunds to manage and treat water along the site over the winter and during construction.

The Waikato Regional Council carries out weekly audits inspecting the site to ensure all erosion and sediment controls required to protect the environment are operating as designed.



## Red Rivers and project planting programme

The Huntly project involves the largest ecological component being undertaken by the NZ Transport Agency in the upper North Island.

About 1.3 million plants will be planted along the section including along farm drains, in connecting wetlands and streams adjacent to the project and at Lake Kimihia.

Planting will also be carried out in an area known as the Red Rivers - the Mangawara, Whangamaire, Mangatoketoke and Komakorau Streams. The Red Rivers planting will be carried out this autumn and winter.

Plants have been eco-sourced using seed from the area and seedlings are being grown at two nurseries, one north of Auckland and another near Taupo.

The contractor completed some spraying of weeds and willows both on the ground and from the air in late summer to prepare areas for planting, including at Lake Kimihia where planting will start in 2017.

Project Director Tony Dickens says they have also been working on their pest control programme which has included ridding the project area of feral goats, and installing ground bait stations in the Taupiri Scientific Reserve in preparation for possum and rat control commencing later this year.



Planting is already under way.

## This season

600,000 cubic metres of earth moved

200,000 cubic metres moved in the Taupiri Pass

20 culverts installed

110 decanting earth bunds and 18 sediment retention ponds

60km of earth bunds

Completion of access roads



## Keeping you informed

Keeping the community informed about progress on the Huntly section is important to the project team.

We'll also be keeping you informed through these quarterly newsletters, regular updates to residents of works happening in their area and links on our website and Facebook page.



Follow us on Facebook  
[Facebook.com/waikatoexpressway](https://www.facebook.com/waikatoexpressway)



To sign up for our email newsletters go to  
[www.nzta.govt.nz/waikatoexpressway](http://www.nzta.govt.nz/waikatoexpressway)





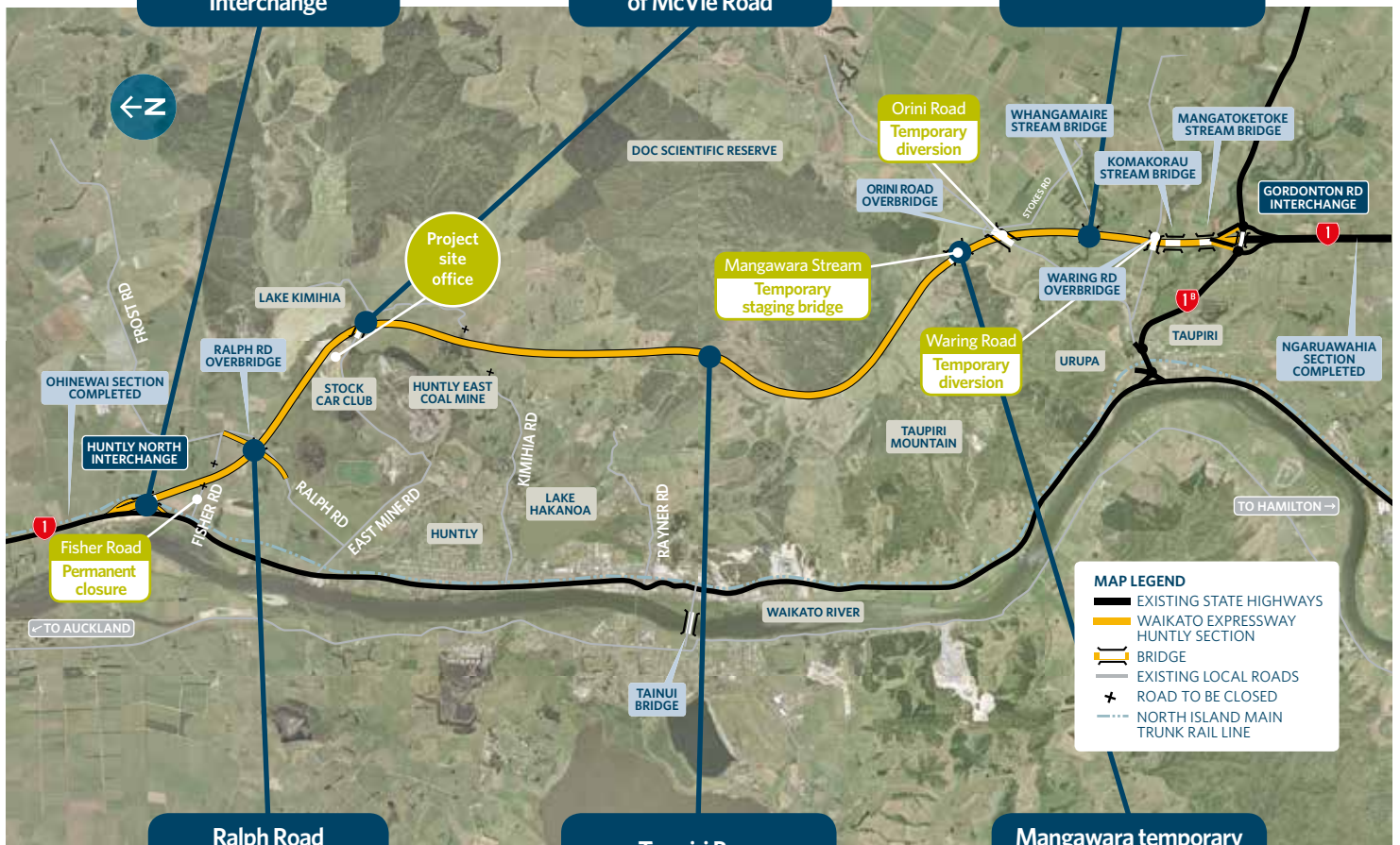
Huntly Northern Interchange



Works to the south of McVie Road



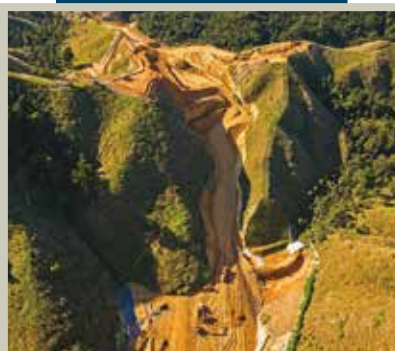
Whangamaire Bridge



Ralph Road overbridge

Taupiri Pass

Mangawara temporary staging bridge





# Bridging the Huntly section

There are nine bridges to be built across the 15.2km Huntly section. Three of them are under construction and work will continue on these over the winter season.

## Mangawara Stream Bridge

- Permanent piles have been completed.
- Pile cap construction is under way
- The northern abutment MSE walls have been built and pre-loaded to allow the ground beneath to settle
- The southern abutment MSE wall is nearing completion and will also have pre-load material placed to allow the ground beneath to settle

## Whangamaire Stream Bridge

- Temporary staging has been constructed to give the cranes a working platform
- Three permanent piles have been driven to a depth of up to 50 metres
- Piling is expected to be completed in September

## Ralph Road Bridge

- The earthworks has been completed to allow the bridge construction to commence
- Construction of the mechanically stabilised earth (MSE) walls for the bridge abutments have commenced

# Roading engineers in the making

The Fulton Hogan HEB Joint Venture has captured the imagination of a group of budding engineers at Kimihia School.

Three classes from years six, seven and eight are studying the Huntly section during term two, their project kicking off with a presentation from Project Director Tony Dickens and Stakeholder Liaison Manager Trish Viall.

From the presentation given the classes are then choosing areas they want to study further. So far over 80 questions have come back from the students. Trish says the

questions are really well thought out and engaging.

“We were really impressed with the questions they’ve asked. We ended up spending two hours at the school because the children were so interested in what we’re doing. After the presentation, when asked, 30 per cent of the students wanted to be engineers.”

Once the classes have determined their areas of focus, various staff from the project will talk to the children about their specific subjects.

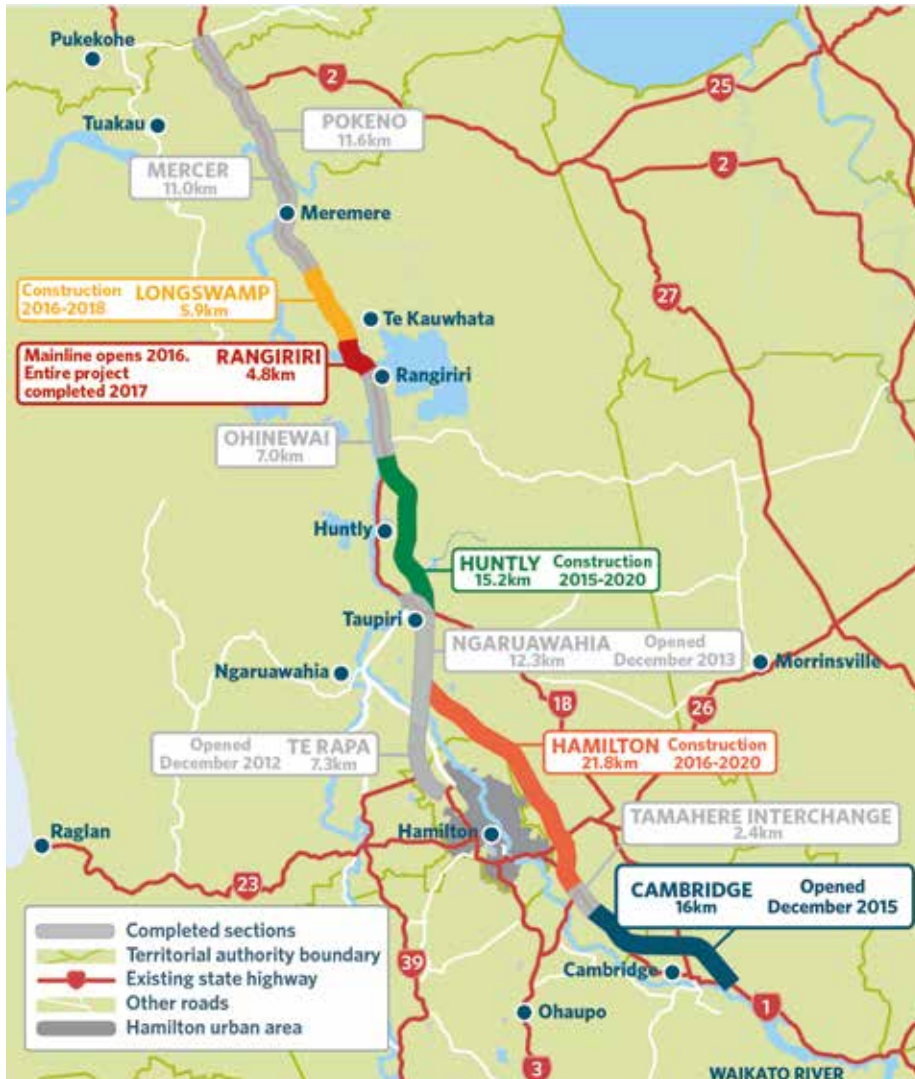
A site visit to view the works will also be arranged. We’ll keep you up to date with their projects as they progress.



Students taking notes during the presentation by Trish Viall and Tony Dickens.

# Expressway overview map

The Waikato Expressway is one of the Government's seven Roads of National Significance. It will improve safety and reliability, and reduce travel times and congestion on State Highway 1 by delivering a four-lane highway from the Bombay Hills to south of Cambridge. The Expressway is being built in seven sections.



## Did you know?

- The Huntly project involves 36 major culverts ranging in length from 13m to 130m long
- The project requires more than 3.5 million cubic metres of earthworks
- The main types of soils include puketoka silts, clays and greywacke
- The Taupiri Pass cutting will require about 1 million cubic metres of material to be moved
- The final 10 per cent will be hard rock and need controlled blasting

## Girls at the top

The Fulton Hogan HEB Joint Venture has up to eight female operators working on the Huntly section carrying out earth works across the project.

They are highly skilled ladies and many have been operating for a number of years both here in New Zealand and overseas. Most have experience using a number of different machines and are working in different areas across the project including the Taupiri Pass area where the team need to shift 1 million cubic metres of material.

They are currently operating bulldozers, rollers, dump trucks, and water carts on the project. When asked what drove them they all said they enjoy earthworks as the challenges change daily. All highly recommend other females to have the confidence and give it a go!



L to R: Alana Hodge bulldozer operator, Cathy Hunt dump truck operator and Shannan Smith bulldozer operator



### Any questions?

**Project site office**  
199 McVie Road



**Freephone**  
0800 HUN INFO (486 463)

#### Trish Viall

Fulton Hogan HEB Joint Venture  
Stakeholder liaison manager  
Phone 07 828 0137  
Mobile 027 548 7474

#### Nicola Martin

NZ Transport Agency  
Communications and stakeholder liaison manager  
Phone 07 958 7260  
Email: Nicola.martin@nzta.govt.nz