



SH1 Whangārei to Wellsford safety improvements

Central project

The SH1 Whangārei to Wellsford Central safety improvements project extends 17km from the Port Marsden Highway (SH15) roundabout to north of the Brynderwyn Hills.

Project Status

A contract for the delivery of Stage One works has been awarded to Wharehine Construction Limited.

Works began in October and include wide centreline from SH15 to Lagoon Bridge with 1km of flexible median barrier from the SH15 roundabout to Sandford Road. Wide centreline continues from north of Finlayson Brook Road to Waipū Gorge Road.

The project team is continuing to engage with key stakeholders, businesses, affected landowners, local community and iwi about the proposed safety improvements as the project design develops.



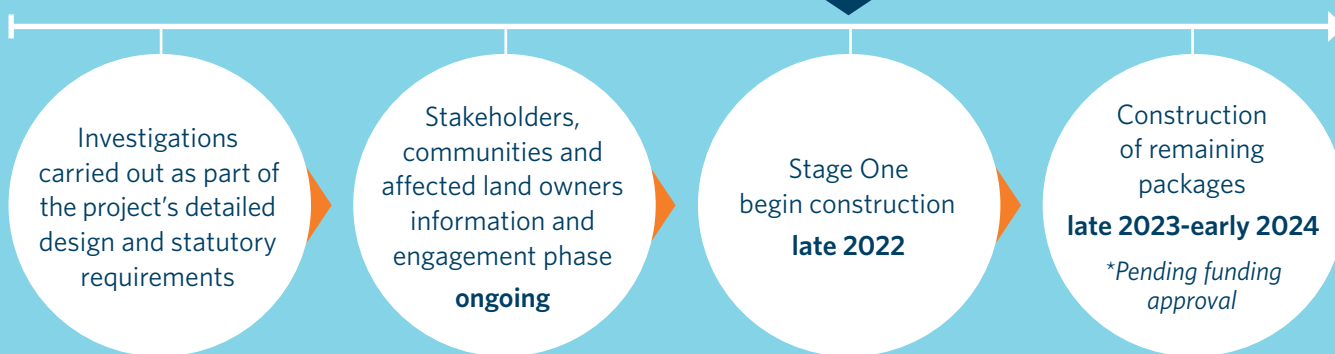
Wide centrelines create more space between lanes and help separate oncoming vehicles. They can reduce serious crashes by up to 20%.



Flexible median barriers can reduce deaths and serious injuries by up to 65%. They prevent head-on crashes which is how most people are killed or seriously injured on our roads.

Project timeline

We are here



Find out more

If you would like to find out more about the SH1 Whangārei to Wellsford projects or subscribe for updates, please visit our website.



www.nzta.govt.nz/whangarei-to-wellsford

If you have any questions regarding the projects, please email or call.



northlandproject@nzta.govt.nz



0800 4 HIGHWAYS (0800 44 44 49)

Stage One

(note: indicative graphic only)



Median barrier example

Package 1

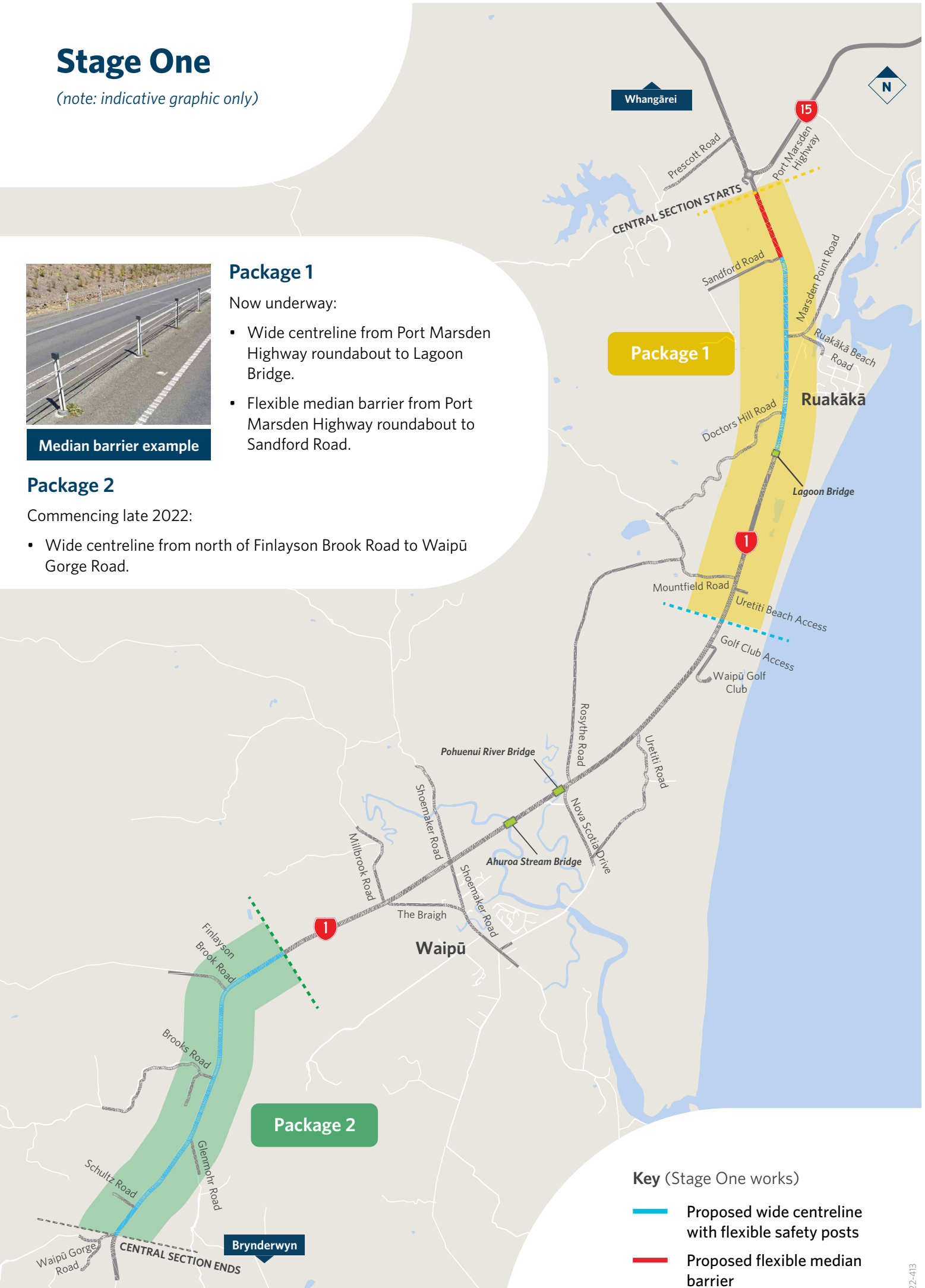
Now underway:

- Wide centreline from Port Marsden Highway roundabout to Lagoon Bridge.
- Flexible median barrier from Port Marsden Highway roundabout to Sandford Road.

Package 2

Commencing late 2022:

- Wide centreline from north of Finlayson Brook Road to Waipū Gorge Road.



Key (Stage One works)

- Proposed wide centreline with flexible safety posts
- Proposed flexible median barrier