

CONNECTING NORTHLAND

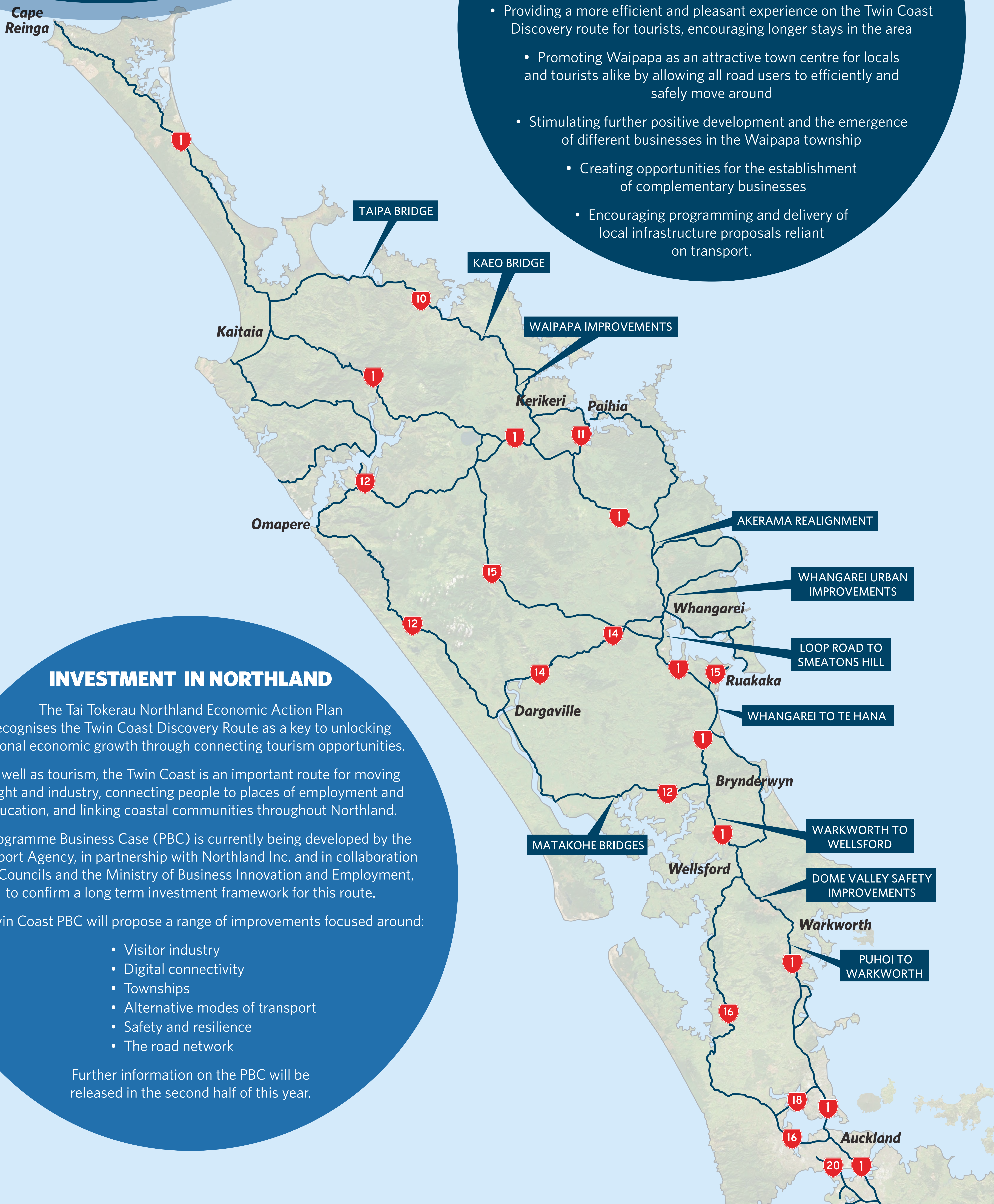
SH10 WAIPAPA IMPROVEMENTS

ECONOMIC GROWTH

Improvements to the SH10 Waipapa intersection in conjunction with the Far North District Plan review will enable economic opportunities for Waipapa, Kerikeri and the Far North, by:

- Creating a safe, simple gateway to Waipapa and Kerikeri townships and businesses along connected local roads, particularly the proposed extension of Klinac Lane
- Providing a more efficient and pleasant experience on the Twin Coast Discovery route for tourists, encouraging longer stays in the area
 - Promoting Waipapa as an attractive town centre for locals and tourists alike by allowing all road users to efficiently and safely move around
- Stimulating further positive development and the emergence of different businesses in the Waipapa township
 - Creating opportunities for the establishment of complementary businesses
 - Encouraging programming and delivery of local infrastructure proposals reliant on transport.

Cape Reinga



INVESTMENT IN NORTHLAND

The Tai Tokerau Northland Economic Action Plan recognises the Twin Coast Discovery Route as a key to unlocking regional economic growth through connecting tourism opportunities.

As well as tourism, the Twin Coast is an important route for moving freight and industry, connecting people to places of employment and education, and linking coastal communities throughout Northland.

A Programme Business Case (PBC) is currently being developed by the Transport Agency, in partnership with Northland Inc. and in collaboration with Councils and the Ministry of Business Innovation and Employment, to confirm a long term investment framework for this route.

The Twin Coast PBC will propose a range of improvements focused around:

- Visitor industry
- Digital connectivity
- Townships
- Alternative modes of transport
- Safety and resilience
- The road network

Further information on the PBC will be released in the second half of this year.