

16 Brigham Creek to Waimauku safety improvements

Stage Two: Brigham Creek to Kumeū

We're improving safety on this busy section of State Highway 16 whilst long term planning is undertaken to address growth in the Northwest of Auckland.

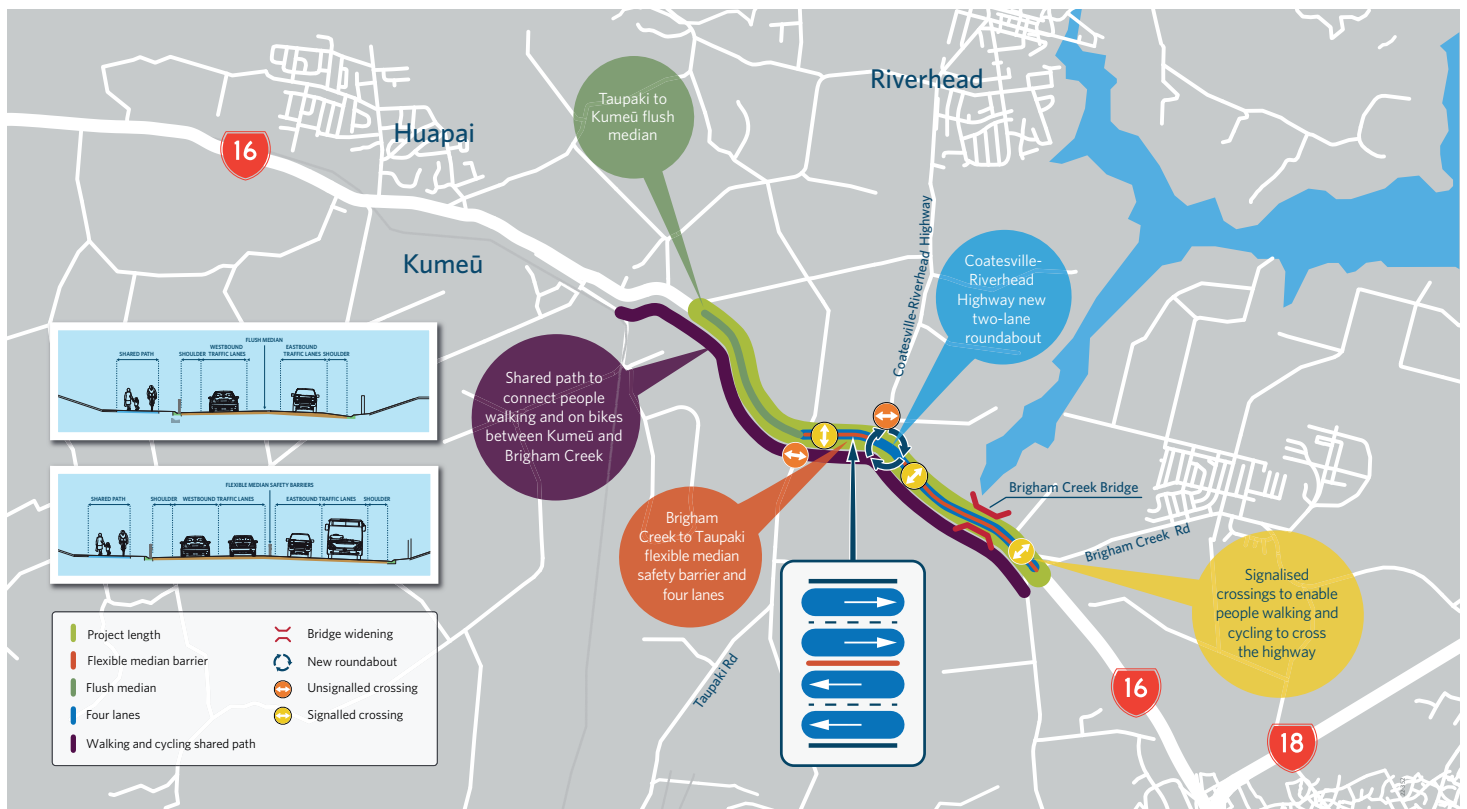
Over the last few months we have been talking to stakeholders and landowners to finalise the detailed design for improvements between the Brigham Creek roundabout and Kumeū.

We'd like to show you our plans before we lodge for consent with Auckland Council later this year.

Come and view the design and talk with a member of the project team:

Wednesday 12 October
5.30pm - 7.30pm

Te Manawa, 11 Kohuhu Lane,
Westgate
(Kōkiri - Auditorium)



Find out more:

Visit: nzta.govt.nz/projects/sh16-brigham-creek-and-waimauku

Email: SH16SafetyImprove@nzta.govt.nz

Call: 0800 222 975

Frequently asked questions

1. Why is the project needed?

State Highway 16 (SH16) between Brigham Creek and Waimauku needs to be made safer. Between 2020 and 2021, two people were seriously injured and 26 people obtained minor injuries on this stretch of road. This makes it one of the highest-risk rural roads in the country. While people make mistakes and crashes will happen, people being killed or seriously injured on our roads is preventable. Therefore, we are investing in improvements in this area.

As well as safety improvements, the project will improve efficiency on this busy section of state highway whilst Te Tupu Ngātahi (Supporting Growth Programme) plans for future growth and congestion. For more information on Te Tupu Ngātahi please visit supportinggrowth.govt.nz/growth-areas/north-west-auckland/

2. Is the project funded?

Yes, the project is funded. Following revised cost estimates completed as part of detailed design, we sought approval from the Waka Kotahi Board for additional project funding in March 2022 and this has been approved.

3. Did the community get to have a say?

Yes. The SH16 Brigham Creek to Waimauku project was initiated in 2016. Between 2016-2018 there was extensive community consultation on the plans. Engagement with stakeholders was ongoing and in 2021 we consulted on banning right-turns onto SH16 from Coatesville-Riverhead Highway. We received significant feedback which was also used to inform our design.

In 2022, engagement has focused on seeking and integrating feedback from partners, key stakeholders and potentially impacted landowners.

4. What happens next?

Once the design is finalised, we will lodge a Resource Consent and Notice of Requirement with Auckland Council to obtain the necessary permissions to designate the land and upgrade the highway. We are aiming to lodge this application by November 2022. The designation will provide certainty on the location and nature of the works.

5. When will construction begin?

This is still to be confirmed as it depends on a number of factors including the length of the property acquisition and consenting processes. We aim to lodge consent applications with Auckland Council by November 2022, after which property acquisition will then start. At this stage, construction is planned to start late 2024/early 2025.

6. What is happening with Stage 1 of the project?

The design for Stage 1 (Huapai to Waimauku) is complete and this remains on hold due to the appeal on the Notice of Requirement. An Environment Court hearing was held in August 2021, and we anticipate a decision on this soon.



INFORMATION

For more information and FAQs please visit our website:
nzta.govt.nz/projects/sh16-brigham-creek-and-waimauku