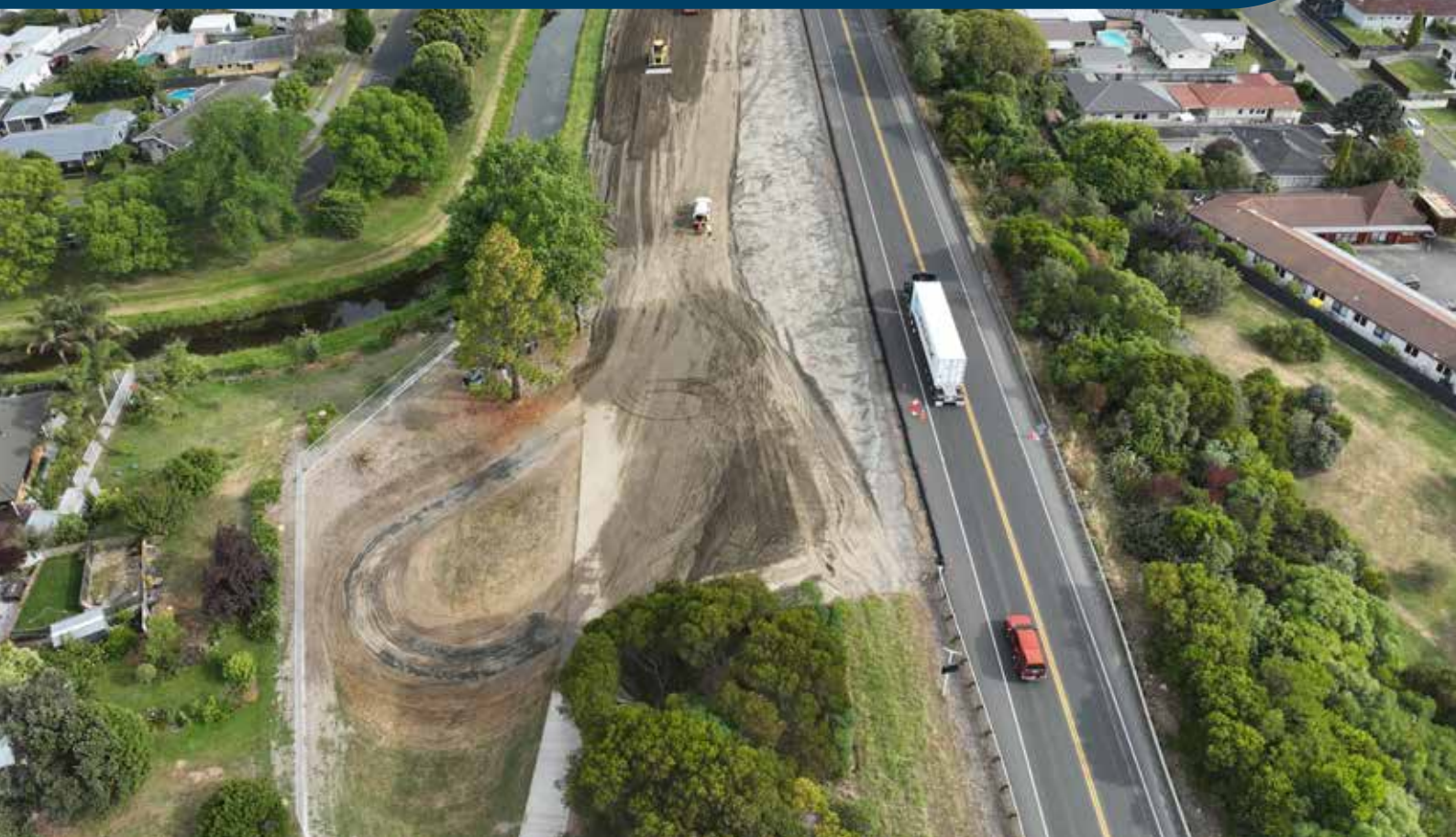


2 Hawke's Bay Expressway

Managing noise, vibration and dust



Managing noise

We understand that traffic and construction noise can impact people's lives. Understanding and mitigating noise is an important part of the project.

Our processes are informed by independent standards and lessons learned from previous projects.

During the detailed design phase, noise mitigation measures will be identified.

To lessen noise impacts we will consider:

- Low-noise road surfaces: Open-graded porous asphalt (OGPA) is considered for the section between Taradale Road and the Tutaekuri River Bridge. OGPA has a porous structure that helps to absorb sound and improve drainage during rain. This makes it quieter than traditional road surfaces like chipseal.
- Audible rumble-strips will not be used near houses.
- Careful design of bridge joints to avoid unnecessary noise from vehicles passing over uneven surfaces and creating impact type noise.

Can trees reduce traffic noise?

Trees do not significantly reduce traffic noise unless planted very densely and deeply. As a general rule - if air can pass through, so can sound.

When visual barriers like trees are removed, people perceive more noise because they can see the traffic and the masking noise from rustling leaves is gone. Visual screening by trees can help reduce the perception of noise. The Hawke's Bay Expressway project will look for opportunities for landscaping to visually screen road traffic. This will be part of the detail design which will be completed later this year.

Construction noise

We are committed to effectively managing construction noise and vibration for nearby residents.

Some effective methods include:

- Scheduling of noisy activities (eg during mid-day hours)
- Temporary noise barriers
- Keeping the community informed about the construction schedule and expected noise levels.

Vibration control

Vibration monitors will be used to measure construction effects on properties near to the work sites. The monitors will trigger with any activity breaches permitted levels and we will take action immediately.

Managing dust

Where the proposed route is close to houses, people may also be affected by dust from construction.

We will take steps to limit these effects on homes and properties. To manage these effects, we will use the following methods:

- Water spraying on site and on access roads to dampen down dust from earthworks
- Wash truck wheels and cover loads to prevent dust formation
- Stabilising exposed areas through rolling, mulch and planting
- Careful management of equipment and working areas, and construction traffic activity
- Temporary noise barriers and muffling of otherwise noisy machines
- Considerate construction equipment choices
- Managing hours of work including daily start up and close down procedures
- Maintaining communication with nearby property owners.



For more information

Contact us by email if you have any questions or require any further information

hbexpressway@nzta.govt.nz

