



# Hawke's Bay Expressway

## Information for landowners and residents

### Four-laning the expressway

NZ Transport Agency Waka Kotahi (NZTA) is working to deliver on the government's Roads of National Significance (RoNS) programme, outlined as a priority in the 2024-27 Government Policy Statement on land transport. The Hawke's Bay Expressway project is included in this programme.

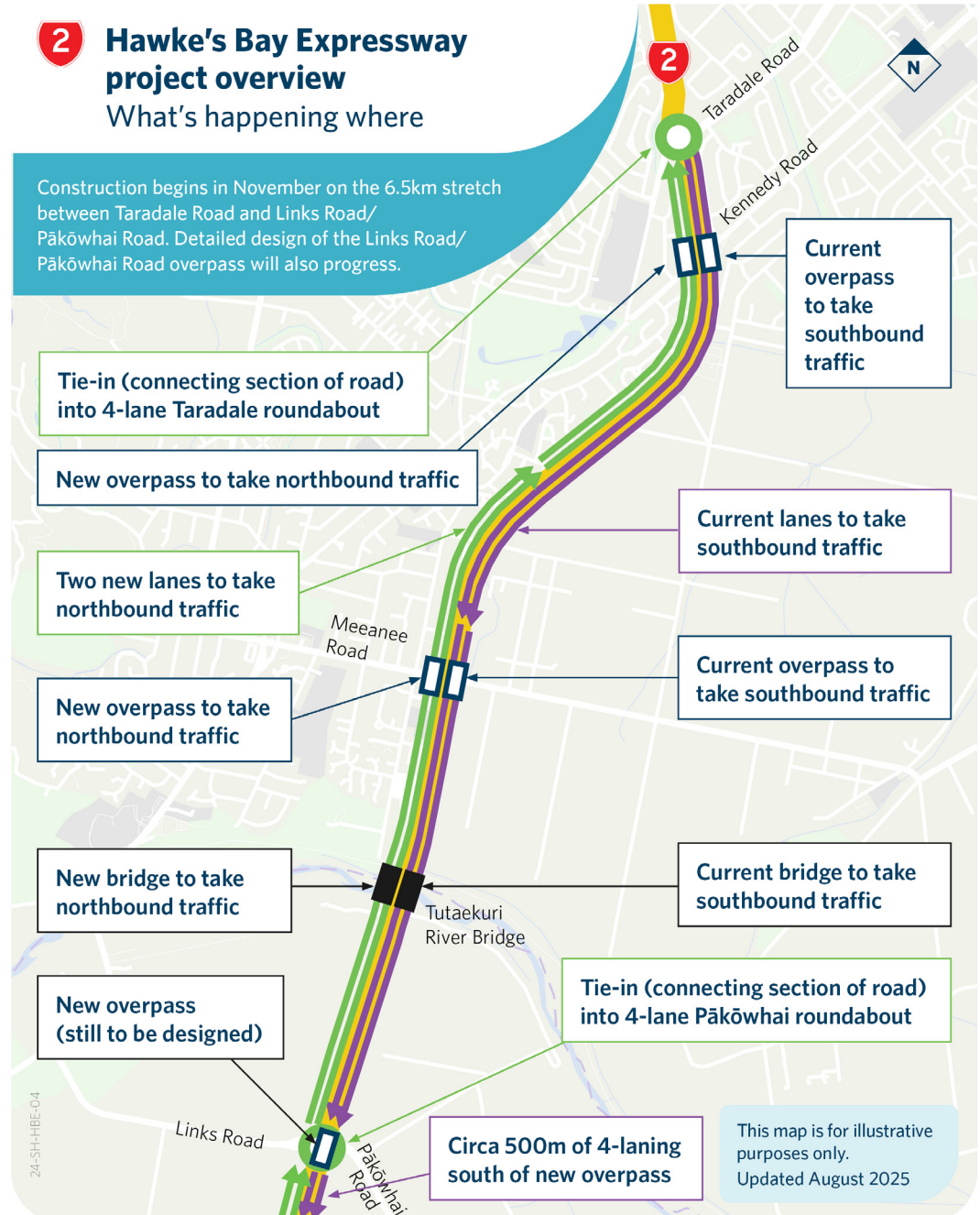
Daily vehicle use has risen 2% yearly over the past 2 decades, with up to 29,000 vehicles daily in the most congested section.

Four-laning the expressway will support national and regional economic growth and productivity by improving capacity, travel time, reliability and safety. It'll provide a more efficient route to support intercity connectedness and residential growth, and help cater to our rural economy, which is heavily reliant on our roads, rail networks and access to the port.

### 2 Hawke's Bay Expressway project overview

#### What's happening where

Construction begins in November on the 6.5km stretch between Taradale Road and Links Road/ Pākōwhai Road. Detailed design of the Links Road/ Pākōwhai Road overpass will also progress.



### Countdown to construction

National Land Transport Funding was approved in August 2025 with construction scheduled to start in November 2025. The project includes 4-laning 6.5km between Taradale Road and Links Road/ Pākōwhai Road, new overpasses at Kennedy Road and Meeanee Road, and an additional bridge at Tutaekuri River, including the design and construction of an overpass at the most critical intersection – Links Road/ Pākōwhai Road and approximately 500m of 4-laning south of that point.

## Timeline of upcoming work

Construction is scheduled from November 2025 to December 2029, including the overpass at Links Road/Pākōwhai Road. Bridge works will occur concurrently with road construction.

- **Road construction:** November 2025 to late 2029.
- **Tutaekuri River Bridge:** November 2025 to March 2027.
- **Meeanee overpass:** January 2026 to March 2027.

- **Kennedy overpass:** April 2026 to March 2027.
- **Links Road/Pākōwhai Road overpass:** March 2026 to late 2029.

In August, we began work south of Links Road/Pākōwhai Road to support future corridor investment. This includes ground improvements at the Ngaruroro River Bridge that are planned to start in November 2025.

Please note that dates are subject to change.

## Your questions answered

### What are you planning to manage or reduce traffic noise?

We'll be using low-noise pavements to tackle traffic noise directly at the source. This surface is widely recognised as the most effective method for mitigating road noise. It can reduce noise levels by more than 7 decibels compared to traditional chipseal, currently used on the expressway.

In addition to this, bridge joints will be asphalted over to prevent the 'thump' noise from vehicles passing over uneven surfaces. Rumble strips will only be installed in non-residential areas to avoid nighttime disruption.

### How will construction impacts be managed?

We'll be working hard to minimise disruption wherever possible. However, due to the nature of the work, some level of temporary inconvenience is unfortunately unavoidable. This may include noise, vibration, dust and traffic changes. Near homes, we'll manage noise and dust by carefully controlling work areas and machinery, spraying water on site to reduce the amount of dust and managing work hours. We'll keep residents informed, especially about activities that may be more disruptive.

Construction hours will be Monday to Saturday, 6am to 5pm, with no work on public holidays.

Sunday or night-time work will be required from time to time, depending on project needs.

We're still determining how often this will occur.

### How will the project affect travel times between Napier and Hastings?

Currently, the worst-case journey time between Napier and Hastings can be over 28 minutes, which is expected to drop to around 20 minutes (southbound at morning peak). This means that even on days where there may be some disruption on the route, people can expect a much more predictable trip.

During construction, we recommend that you check for regular traffic updates on our Facebook page and allow for extra delays when travelling the expressway.

### How can people stay updated on the project?

We'll provide regular updates as the project progresses. The project page on the NZTA website will be regularly updated. You can sign up to our regional Connecting Hawke's Bay newsletter, scan the QR code below to subscribe.

In mid-November, we'll be hosting a community drop-in session, a chance to connect, ask questions and learn more about the project. Time and location details will be confirmed soon, so keep an eye out for updates and the event listing on Facebook.

## For more information



To receive regular email updates relevant to the project, please email us at [hbexpressway@nzta.govt.nz](mailto:hbexpressway@nzta.govt.nz)

For more information on the project, visit [nzta.govt.nz/projects/sh2-hawkes-bay-expressway](https://nzta.govt.nz/projects/sh2-hawkes-bay-expressway)

SCAN ME

