



SH75 Halswell Road Improvements

What	We'll be installing temporary traffic lights
Where	Kinnaird Place, between Halswell Road and Renwick Place
When	Monday 25 August 2025, for about 12 weeks

What are we doing?

From Monday 25 August, we'll be working on Kinnaird Place at the intersection with Halswell Road. Our works will include installing new drainage and water main pipes, ducting, kerb and channel, new footpaths and building the new road. We'll need to use temporary traffic lights (as shown over the page) during this time so that we have the space required to complete the work.

Traffic impacts

Traffic will be reduced to one lane through the area we're working in with temporary traffic lights used to manage traffic through the work area. The temporary traffic lights will be in place 24/7 and will operate with a sensor on the road. Please make sure you follow the signage and stop in the right place to activate the sensor. Bus stops may be temporarily closed where we're working, please follow the instructions on the signage provided at the closed stop. Please note - we will not install the temporary traffic lights if they aren't required on any given day.

Our friendly staff on site can assist with any queries. Footpath access around our work site will be maintained. A temporary 30km/h speed limit will be in place where we're working so we can keep our workers and everyone safe.

Access has been planned for and will be provided for emergency services during this time.

Driveway access

Access to properties and businesses will be maintained. However, we may need to work in front of driveways from time to time. We'll try to give you plenty of notice of this. However, if you need to get into or out of your property or business and we're in the way, please just talk to one of our friendly staff and we'll make sure you can use your driveway.

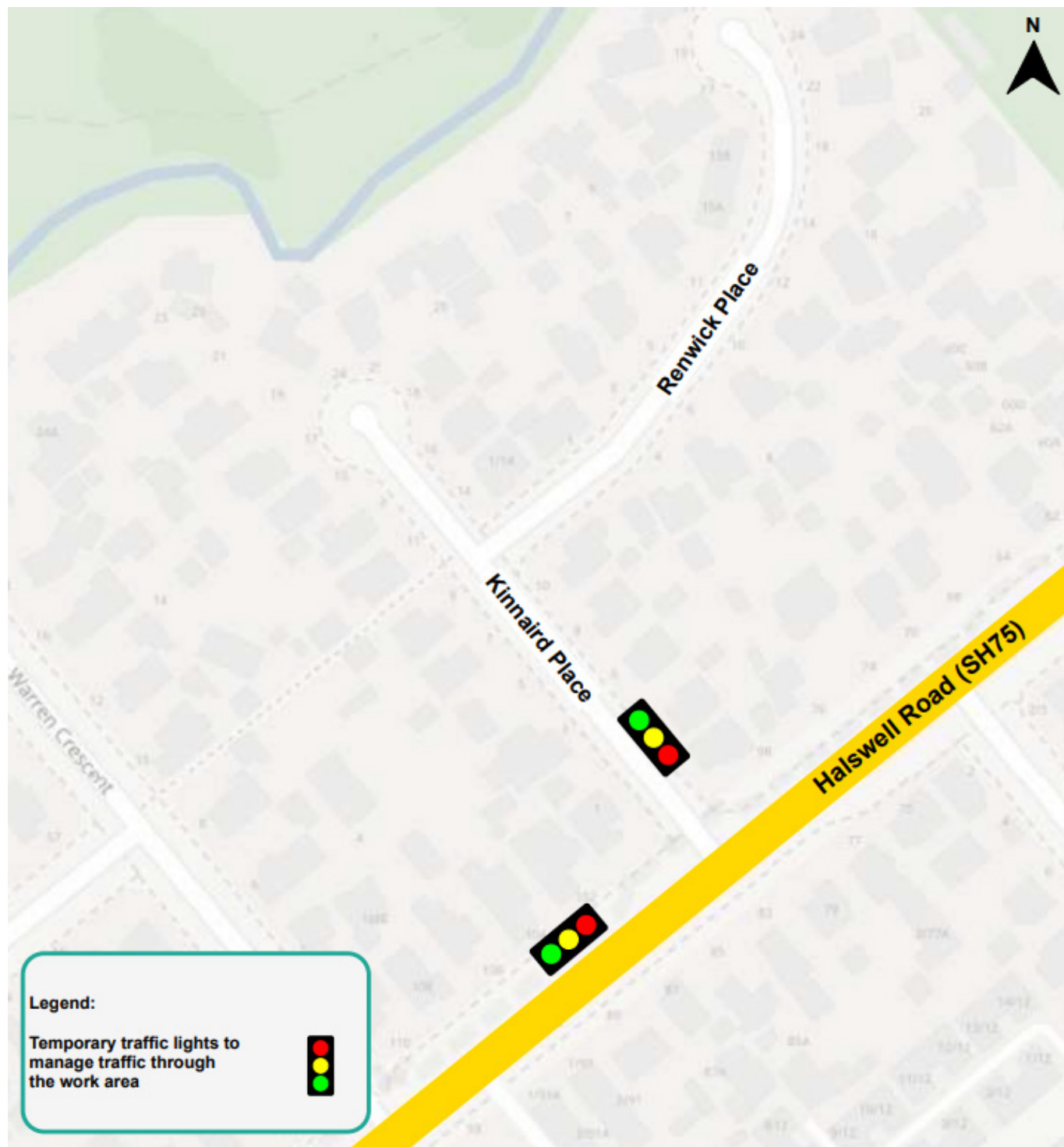
We're sorry for any disruption and thank you for your patience.

CAN WE HELP?

Please contact Fulton Hogan on 0800 ROAD FH (0800 7623 34) Monday to Friday, 8am - 5pm, or email cant.info@fultonhogan.com to discuss any specific access needs such as nurse/doctor visits or Meals on Wheels deliveries to your property. Contact us at anytime if the matter is urgent.

For further information, or to subscribe to updates, please visit www.nzta.govt.nz/Halswell

Traffic management layout



This notice outlines the next phase of construction on Kinnaird Place. We'll need to return at the end of the project to complete some finishing works such as final surfacing and linemarking. We'll update you, closer to the time, with what this will mean regarding traffic management in this area.