



# Tauranga Eastern Link

Project update

May 2013

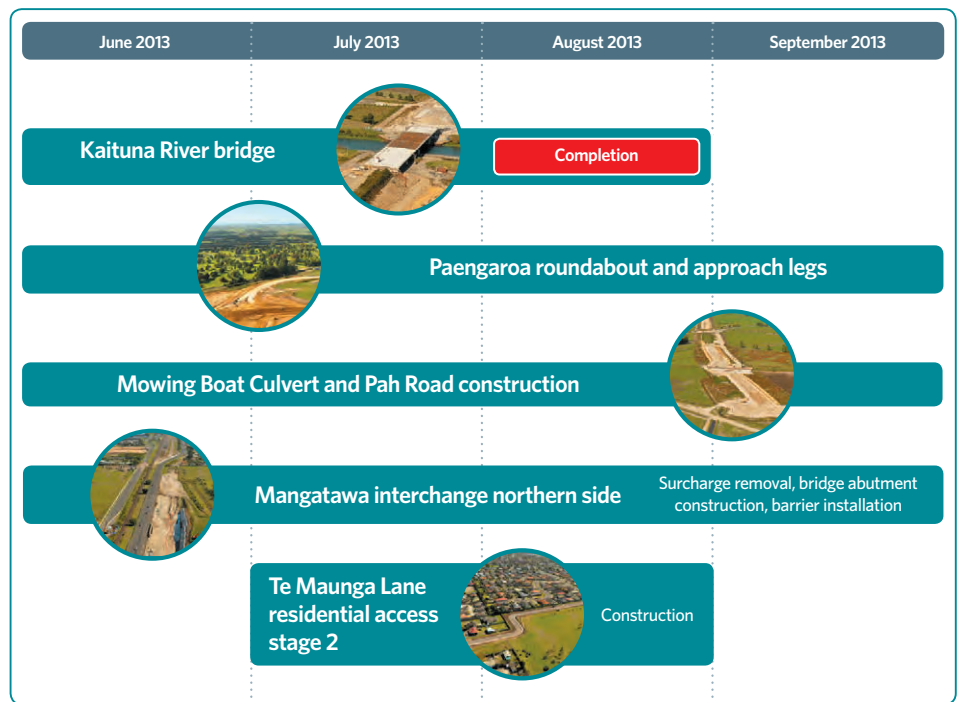
## TEL on track thanks to great weather

Due to a long and dry summer the TEL 2012/2013 construction season has been a success, enabling the project to meet a number of significant milestones. Progress to date includes:

- **Pavements** - construction of the first section of pavement is now underway in the old Te Maunga rail yard area.
- **New local roads** - three new local road connections have been constructed; Te Tumu Road, Te Maunga Lane and Oceandowns Way.
- **Earthworks** - almost 300,000 cubic metres of fill material was moved within Zone C (Kaituna River through to Paengaora), this equates to approximately 150 Olympic sized swimming pools.
- **Settlement** - the settlement period at a number of sites has been achieved and excess material has been moved and reused in other construction areas.
- **Bridges** - construction has started on the Parton Road bridge embankment and the Kaituna River bridge is nearing completion.
- **Interchanges** - at Domain Road the construction of a temporary roundabout, and pavement for a future traffic switch, is well underway.
- **Stormwater and drainage** - permanent culvert construction is underway with ten culvert lines completed.
- **Tara Road extension** - work has started on the wick drains installation and preload filling.

## Proposed construction programme for the next four months

The 2013/2014 construction season will be a busy one for the NZTA, Beca and Fulton Hogan HEB Construction Alliance project team, focussing on completing some of the major structures, building pavements and switching traffic. If you regularly drive along State Highway 2 between Domain Road and Te Maunga you are encouraged to stay alert as activity increases in this area over the next four months.



## Building bridges on the TEL

There are seven bridges on the TEL and construction is underway on six. Three bridges are set to be completed by the end of 2013, they are:



### Rail bridge

At the Paengaroa end of the project, construction of the rail bridge started in April 2012. The next milestone will be in June as the first beams are lifted into place. The rail bridge is the widest bridge on the project at 84 metres. It is due to be finished prior to Christmas.



### Maketu Road bridge

Construction started back in April 2012 with a finish date of October 2013. The piling is now completed and construction of the abutments underway. The next milestone will be in July when the beams will be lifted into place.



### Kaituna River bridge

Construction of the Kaituna River bridge started in January 2012 and in June it will be the first bridge to have construction vehicles crossing it. To view timelapsed construction footage visit [www.nzta.govt.nz/projects/tel/video.html](http://www.nzta.govt.nz/projects/tel/video.html).



### Kaituna River bridge - interesting facts

**Steel sections**  
1000 tonnes of structural steel  
Heaviest steel section: 39 tonne  
Heaviest lift: 59 tonne  
Longest steel section lifted in to position: 58 metres

**Columns and piers**  
Column diameter: 2 metres  
Four columns per pier  
Three piers

**Piles**  
Quantity: 68  
Depth: up to 50 metres each (3500 metres of piles)

**Span**  
186 metres total  
39 metres over Bell Road  
55 metres over the river

**Concrete deck panels**  
675

**Poured concrete**  
Total: 2500 cubic metres  
Bridge deck: 750 cubic metres  
Abutments, columns, piles, pile caps: 1750 cubic metres

**Embankments**  
Structural fill: 150,000 cubic metres per side

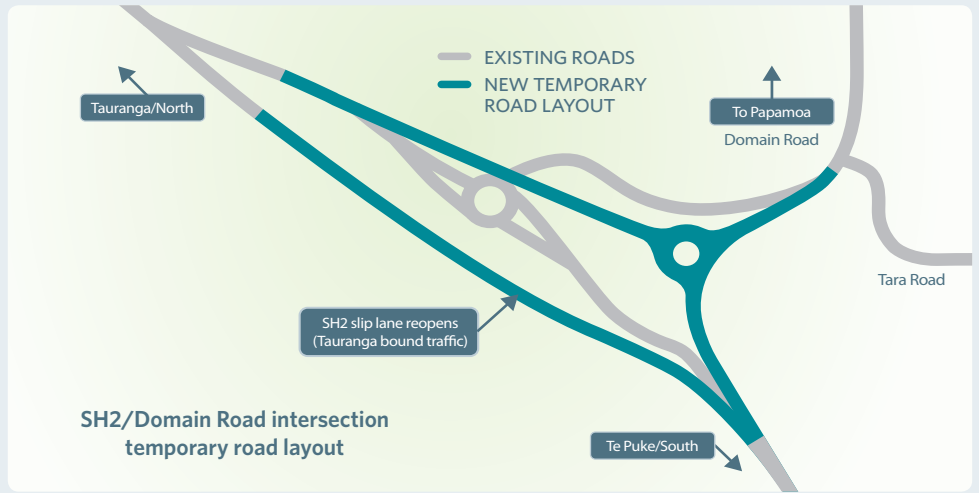
**Quantity nuts and bolts**  
19,000

# Changes ahead for drivers

By the end of winter 2013 traffic switches will have taken place at Te Maunga and the Domain Road roundabout to allow construction in these areas to progress.

## Domain Road

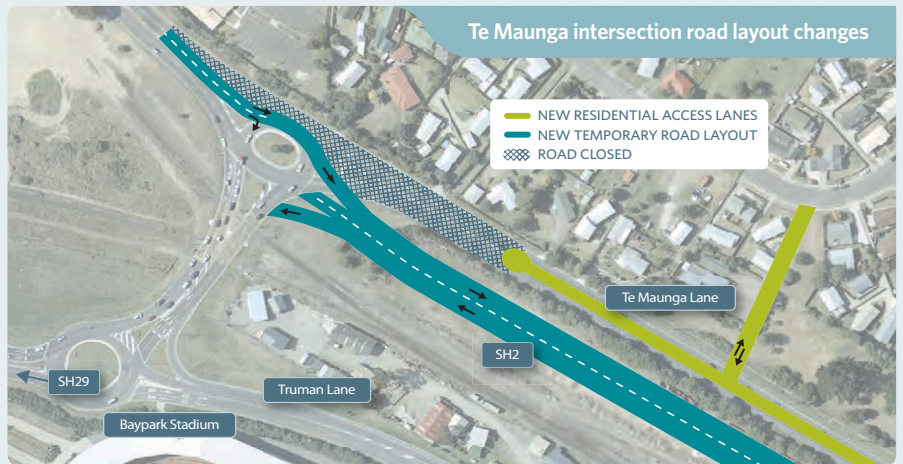
To allow for ground preparation work to take place on the existing highway the northbound slip lane (which was closed to traffic in July 2011) will reopen. Traffic will also be moved onto a temporary roundabout which is being built at the SH2/Domain Road intersection.



## Te Maunga

In the coming months traffic will be moved at Te Maunga to allow construction to start on the southbound lanes and completion of the Te Maunga Lane (new residential access lane). What to expect:

- State Highway 2 (SH2) southbound slip lane will be closed and all north and south bound traffic will be shifted on to the new section of road (approximately 1km in length) that is currently being constructed adjacent to the rail yard.
- The new residential access lanes (Te Maunga Lane and Oeandowns Way) will be opened and residents' access on to SH2 will be permanently closed.



## Our contact details

MAIL TO  
 Tauranga Eastern Link Team  
 NZ Transport Agency  
 PO Box 13-055,  
 Tauranga Central

free phone 0800 TEL INFO (0800 835 463)  
 email [taurangaeasternlink@nzta.govt.nz](mailto:taurangaeasternlink@nzta.govt.nz)  
 For more information visit [www.nzta.govt.nz/tel](http://www.nzta.govt.nz/tel)