

TELL US ABOUT YOURSELF

I live in (tick box)

<input type="checkbox"/> Whāngārei	<input type="checkbox"/> Portland	<input type="checkbox"/> Otaika
<input type="checkbox"/> Ruakaka	<input type="checkbox"/> Waipu	<input type="checkbox"/> Kaiwaka
<input type="checkbox"/> Te Hana	<input type="checkbox"/> Somewhere else: _____	

I am a regular traveler on SH1 between Auckland and Whāngārei

Yes No

If you have answered yes, please explain what best describes your reasons for travel

Commuting to work Moving goods/freight Travelling to school Other (please describe below)

Please provide your contact details if you would like to stay in touch with the Whāngārei to Te Hana project.

Name _____ Organisation (if applicable) _____

Postal address or email _____

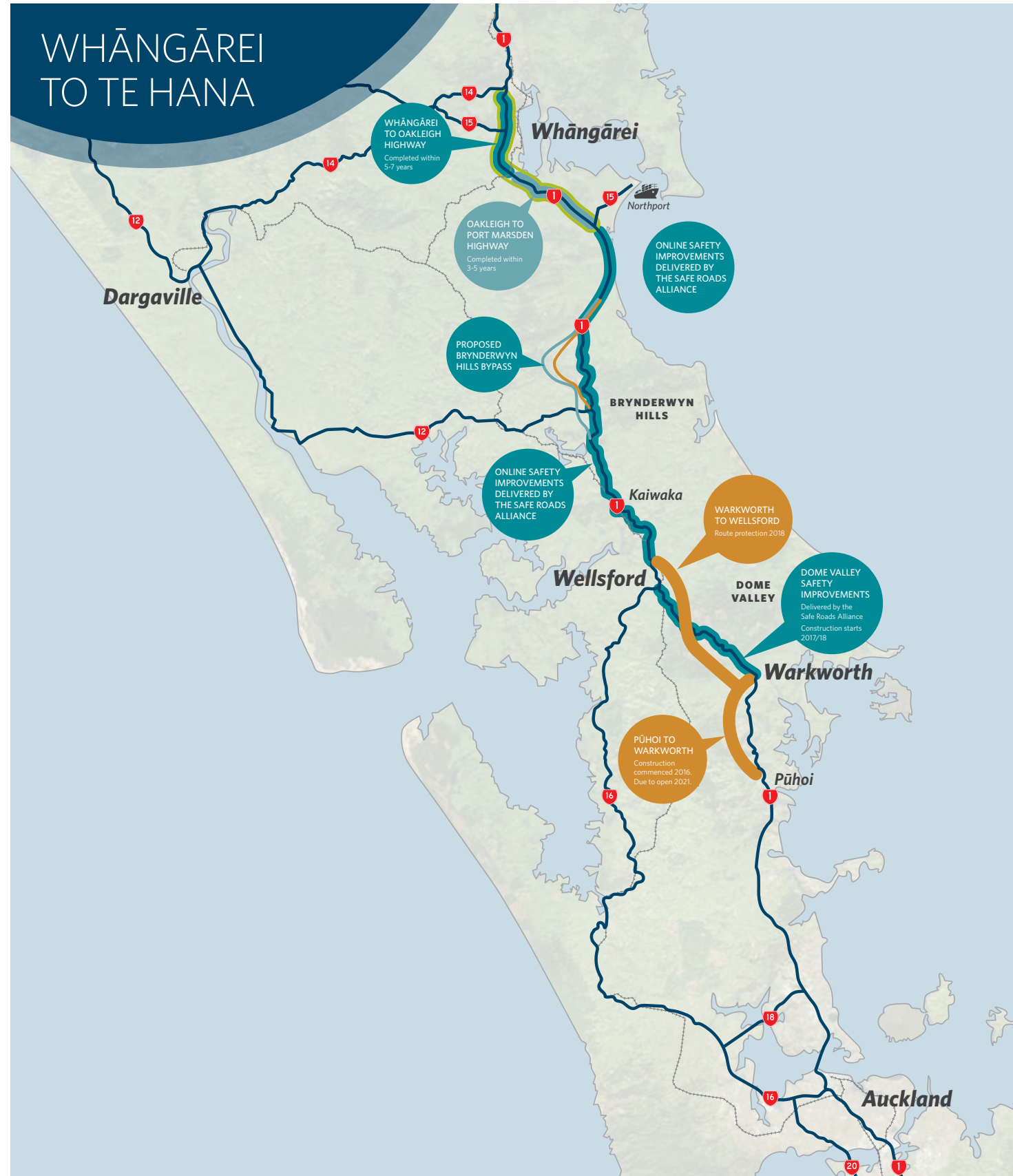
If you choose to enter your contact details above, your personal details will not be published. If you enter your email address, we will add you to our future e-newsletter subscriber list. It is anticipated this newsletter would be sent approximately every few months.

To opt out of receiving the e-newsletter updates, please tick this box.

Fold along dotted line



Whāngārei to Te Hana
Private Bag 106602
Auckland 1143



CONTACT US:
For more information on this project please visit www.nzta.govt.nz/Whāngārei-to-tehana
If you have any questions, you can contact the project team on w2th@nzta.govt.nz or 0800 44 44 49



The NZ Transport Agency, on behalf of the NZ Government, is undertaking a long-term programme of investment in State Highway 1 between Whāngārei and Auckland. This investment aims to improve the safety, reliability and resilience of the state highway between Whāngārei and Auckland for local communities, visitors and freight.

- The objectives of the Whāngārei to Te Hana programme are to:
- Improve the safety and quality of State Highway 1 (eg alignment, overtaking, gradient) for travellers and significantly reduce the number of serious crashes.
 - Increase the reliability of travel times and improve freight movements between Northland and Auckland, as well as access to key destinations (such as Northport and Auckland Airport).
 - Provide more resilience in the wider state highway network, meaning less road closures and less detours.
 - Encourage safer driver behaviour and improve the journey experience.
 - Support economic growth in Northland.

HAVE YOUR SAY
Now is the time to provide feedback on options for Whāngārei to Te Hana. There are four options for 4-laning between Whāngārei and Port Marsden Highway (SH15) and two options to bypass the Brynderwyn Hills. The Safe Roads Alliance are also seeking feedback on roads and roadside improvements planned between Port Marsden Highway (SH15) and Te Hana. Please complete and return the attached form, or go online to have your say www.nzta.govt.nz/Whāngārei-to-tehana. Let us know your thoughts by Tuesday 12 September.

CONNECTING NORTHLAND
Whāngārei to Te Hana is an important corridor in supporting the transport objectives of Connecting Northland by increasing route reliability and travel time predictability. This long-term programme of investment will provide safer, easier, and more reliable journeys, reduce the cost of travel for the freight industry, and improve the ability of Northland to attract investment and tourism. SH1 is a vital link between Northland and the rest of the country for freight and tourism, which are key components of the Northland economy.

- Around 2 million tonnes of freight moves between Northland and Auckland each year
- Tourism in Northland accounts for \$1 billion a year

WHY IS THE PROGRAMME CALLED WHĀNGĀREI TO TE HANA?
Te Hana is where the northern Auckland motorway network will start, once the Ara Tuhono Pūhoi to Wellsford Road of National Significance (RoNS) is completed. Construction of the Pūhoi to Warkworth section is due to be completed in 2021 and planning is currently underway on the Warkworth to Wellsford section.

The Auckland to Whāngārei Programme Business Case included the Pūhoi to Wellsford Road of National Significance. As the RoNS project is underway, the investment programme is focused on Whāngārei to Te Hana. The Whāngārei to Te Hana programme is divided into two sections:

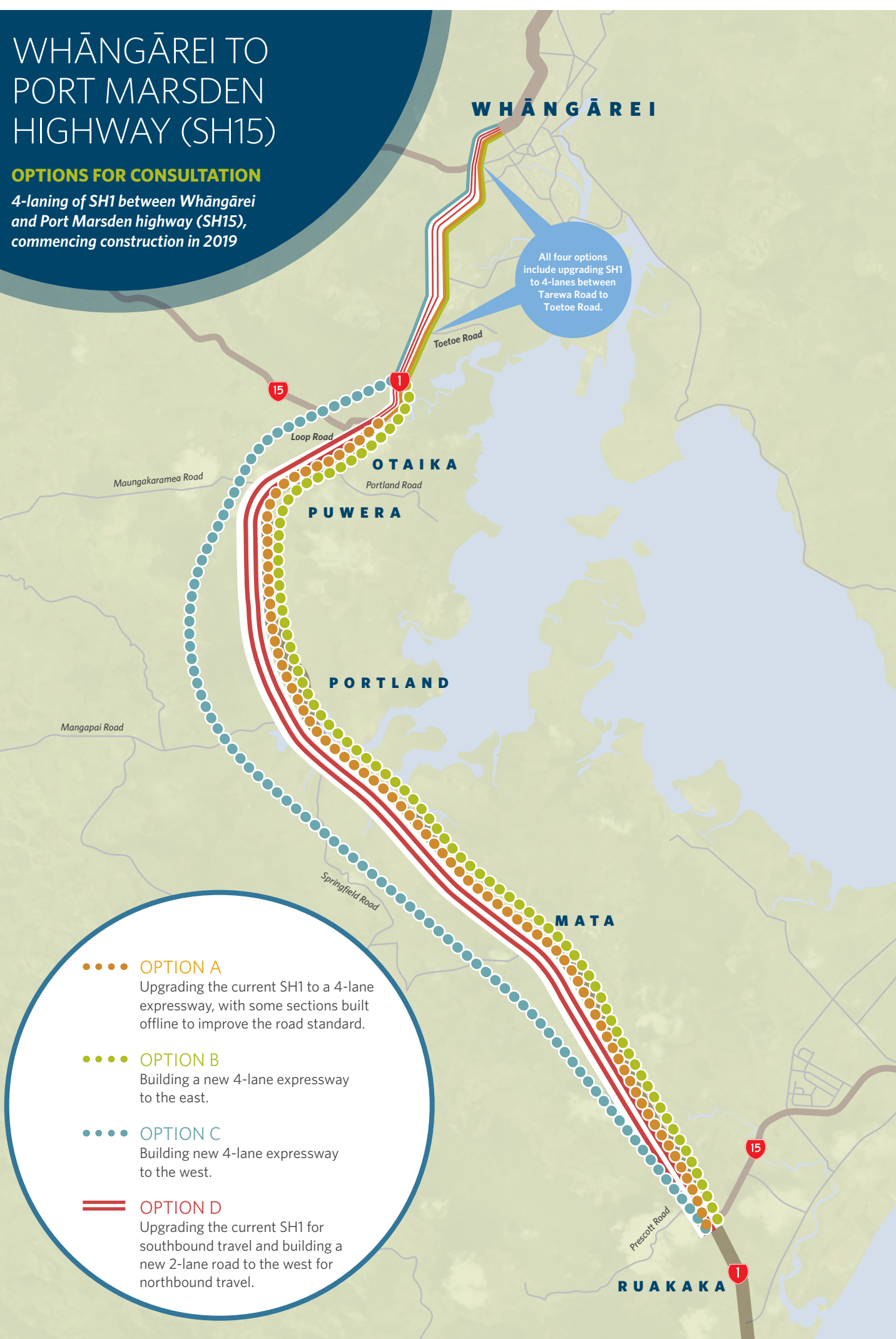
- Whāngārei to Port Marsden Highway (SH15)
- Port Marsden Highway (SH15) to Te Hana

A short list of options for 4-laning Whāngārei to Port Marsden Highway (SH15) is now out for public consultation. Subject to planning approvals, funding and property acquisition, construction is programmed to commence in 2019. Options for the recommended programme from Port Marsden Highway (SH15) to Te Hana (where the route meets Ara Tuhono – Pūhoi to Wellsford Road of National Significance) are under development.

WHĀNGĀREI TO PORT MARSDEN HIGHWAY (SH15)

OPTIONS FOR CONSULTATION

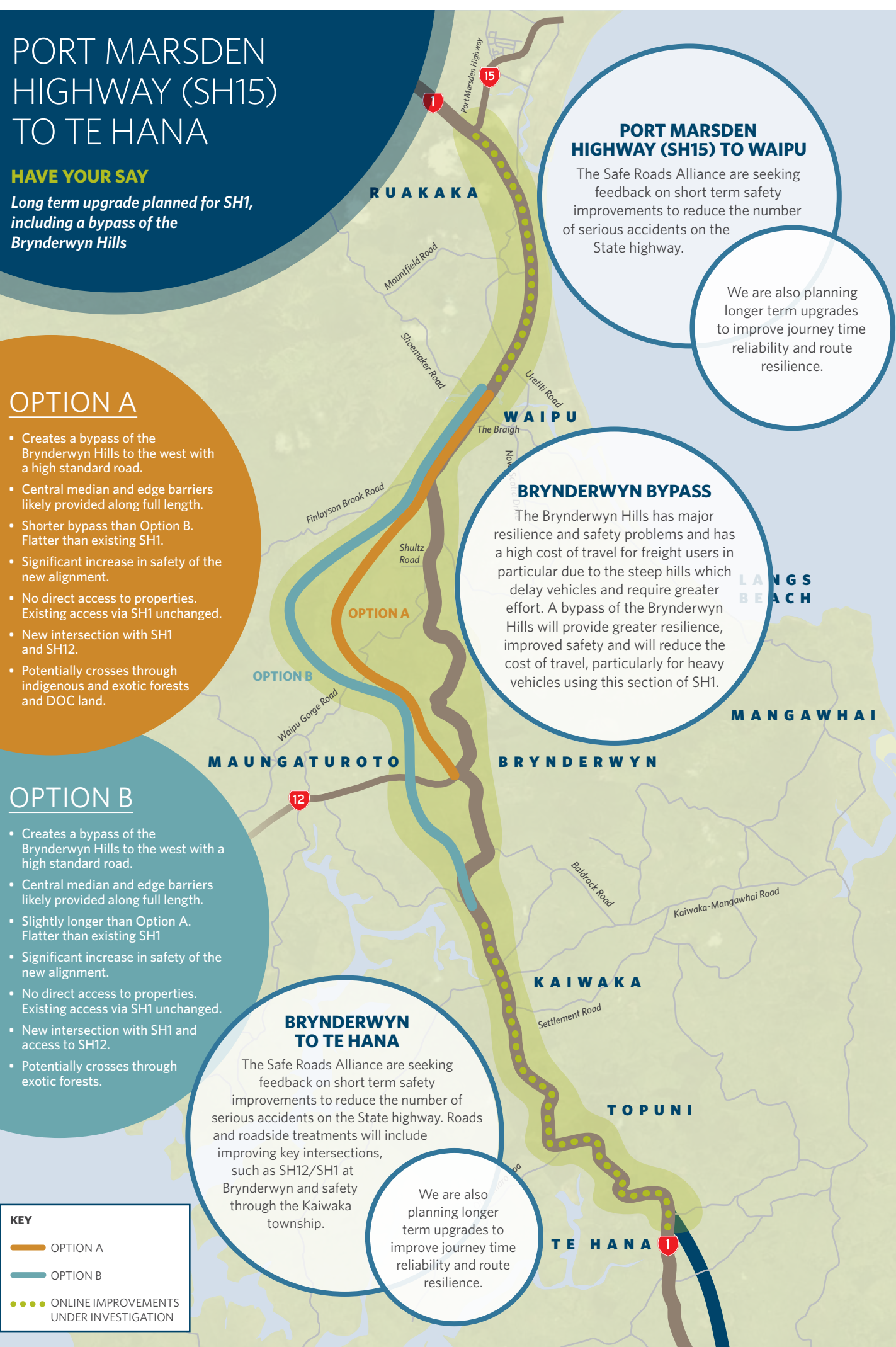
4-laning of SH1 between Whāngārei and Port Marsden highway (SH15), commencing construction in 2019



PORT MARSDEN HIGHWAY (SH15) TO TE HANA

HAVE YOUR SAY

Long term upgrade planned for SH1, including a bypass of the Brynderwyn Hills



FEEDBACK FORM

The NZ Transport Agency, on behalf of the NZ Government is planning improvements to State Highway 1 between Whāngārei and Te Hana. We are now seeking feedback on options under development. There are four options for 4-laning between Whāngārei and Port Marsden Highway (SH15) and two options to bypass the Brynderwyn Hills. We are also seeking feedback on where to prioritise short term safety improvements on SH1. Please complete this form, fold and return post to us by **Tuesday 12 September**. If your feedback requires additional paper, simply return your comments in an envelope using the Freepost Authority number in place of a stamp. You can also provide your feedback online www.nzta.govt.nz/Whāngārei-to-tehana, or via email to W2TH@nzta.govt.nz

WHĀNGĀREI TO PORT MARSDEN HIGHWAY

Q1. Which option (A, B, C, or D) is your preferred route and why?

Q2. Which option least favourable to you and why?

Q3. Where, on SH1 between Port Marsden Highway (SH15) to Te Hana, would you like to see the Safe Roads Alliance prioritise safety improvements?

To provide more detailed feedback on the safety improvements, please visit www.nzta.govt.nz/safe-roads

PORT MARSDEN HIGHWAY (SH15) TO TE HANA

Q1. Which option (A,B) to bypass Brynderwyn Hills is your preferred route and why?

Q2. Is there an alternative option to what we have shown that you would prefer and why?

Q3. Where, on SH1 between Port Marsden Highway and Te Hana, do you want prioritised for safer roads and roadside investment?

To send in your feedback form: 1. Please answer the questions on both sides of this page. 2. Tear along the perforation 3. Fold into 3 at the designated marks. 4. Adhere this edge with glue or tape. 5. Return completed form by freepost or at a drop-in information session.