

# Two give way rules are changing

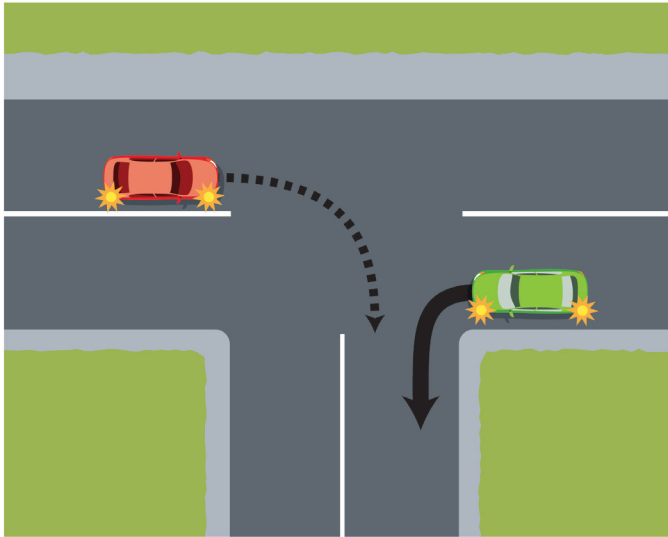
The new rules come into effect at 5am on Sunday 25 March 2012

To make our roads safer, two of the give way rules are changing. These changes will affect all drivers, riders, pedestrians and cyclists. Remember to share the road, obey all road signs and signals, and make sure you know the new rules.

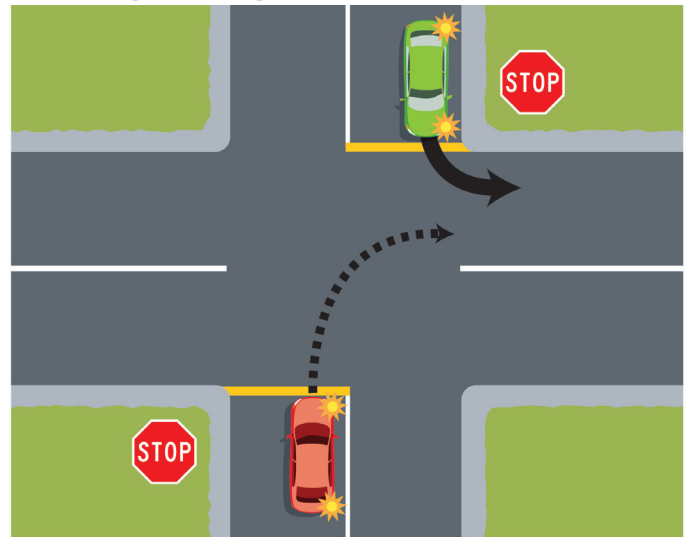
## If you're turning right, give way

This rule will apply at intersections where two vehicles are facing no signs or signals, or the same signs or signals. You will need to give way to left turning vehicles coming from the opposite direction if you are turning right.

### No signs or signals



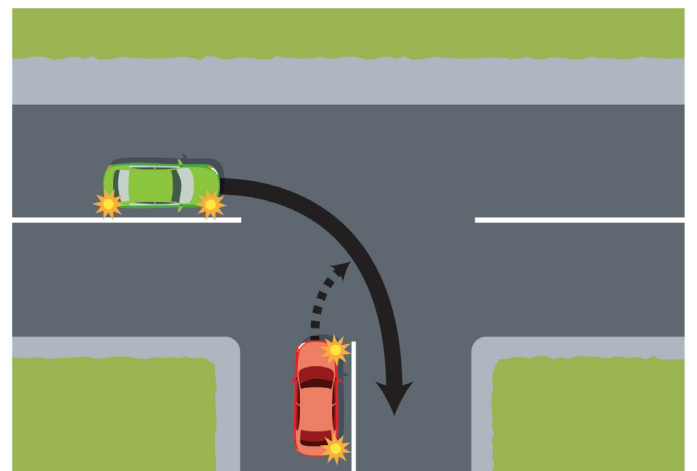
### Same signs or signals



## Top of the 'T' goes before me

When you're turning right from the bottom of a T-intersection with no signs or signals, you will need to give way to all vehicles at the top of the T.

So at all T-intersections and driveways, including public driveways such as at a supermarket or hospital, think 'Top of the T goes before me'.



*(In all these images the red car gives way.)*

Learn the new rules at [www.giveway.govt.nz](http://www.giveway.govt.nz) or call 0800 656 055