



At 5am on Sunday 25 March
2012, two of the give way
rules are changing to make
our roads safer



What two rules are changing?

- the left-turn vs right-turn rule
- the uncontrolled T-intersection rule



Why are these rules changing?

- Changing the give way rules is part of the *Safer Journeys* strategy to reduce the number of deaths and serious injuries on our roads.
- These changes will help reduce confusion on our roads by removing some of the demands currently placed on a driver's decision-making at intersections.



Change 1: The new left-turn vs right-turn rule



Left-turn vs right-turn change

- From 5am on 25 March 2012 - all traffic turning right must give way to a vehicle coming from the opposite direction and turning left





Left-turn vs right-turn change

- This new left-turn v right-turn rule **only applies** at cross roads, T-intersections and driveways where both vehicles are facing no signs or signals (as shown here)

OR...





Left-turn vs right-turn change

...both vehicles are facing the same signs or signals.

- Here is an example with both facing Give Way signs





Left-turn vs right-turn change

- Here is an example with both facing Stop signs





Left-turn vs right-turn change

- Here is an example with both facing green traffic signals





Change 2: The new uncontrolled T-intersection rule

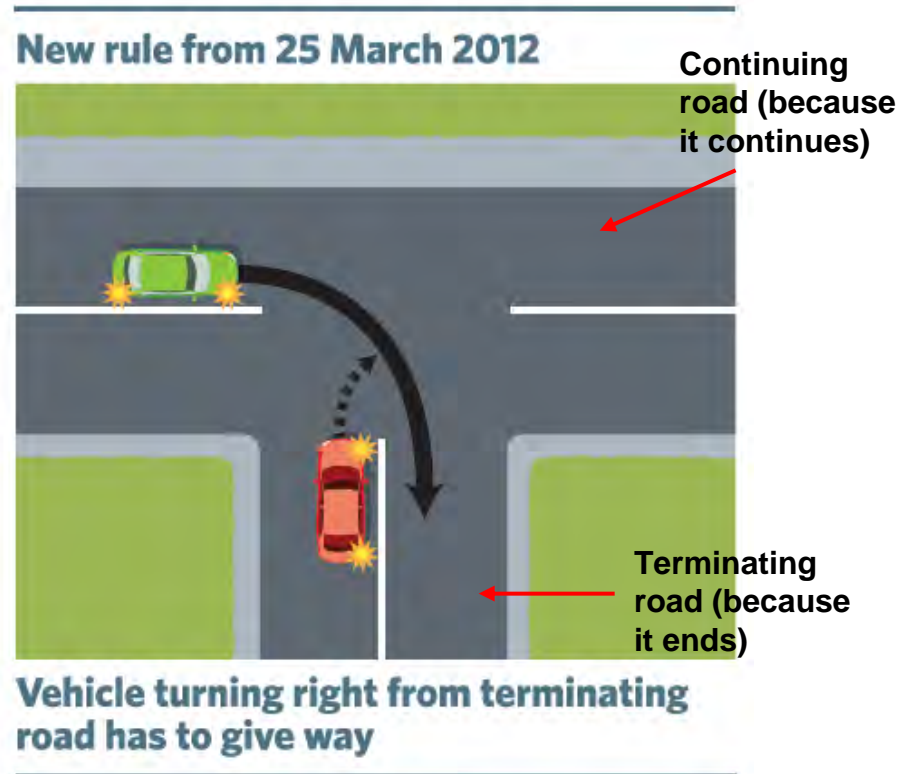


An 'uncontrolled' intersection means there are no signs or signals telling you what to do



Uncontrolled T-intersection change

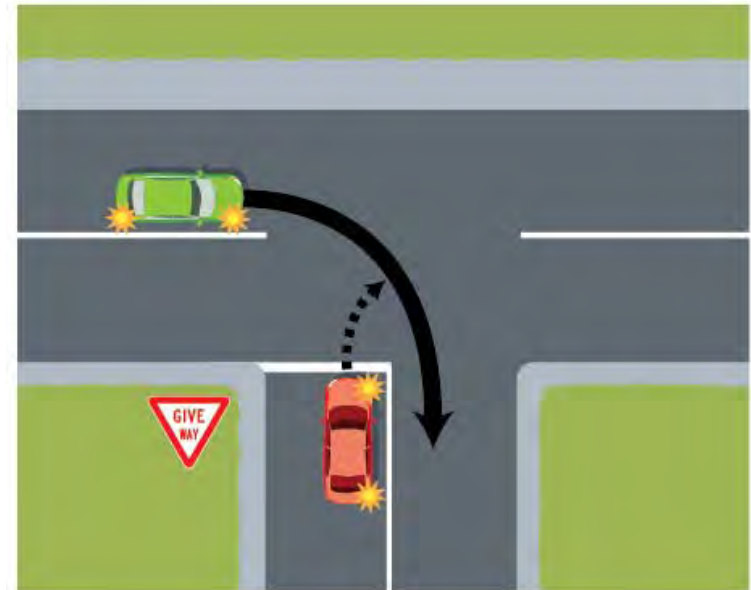
- From 5am on 25 March 2012, all traffic from a **terminating road** (bottom of the T) will have to give way to all traffic on a **continuing road** (top of the T)





Uncontrolled T-intersection change

- This change brings the rule into line with T-intersections where there is a Stop or Give Way sign on the terminating road





Uncontrolled T-intersection change

- This new rule will also apply to uncontrolled driveways, eg, supermarket or hospital
- So traffic exiting the driveway will need to give way to all traffic on the road





Uncontrolled T-intersection change

- Drivers should not pull out to block the footpath in front of pedestrians and cyclists



What intersection/give way
rules stay the same?



What stays the same?

Road users should continue to obey all road signs and signals.

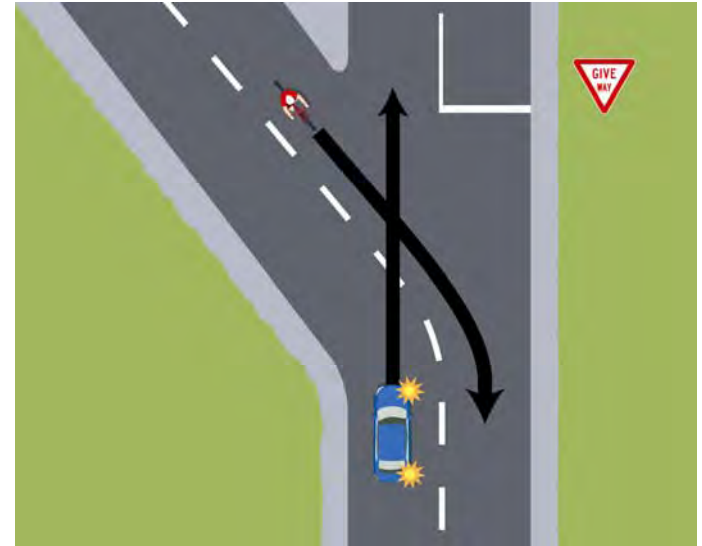
- At an intersection controlled by a Stop sign, you must stop and give way to all other vehicles
- At an intersection controlled by a Give Way sign, you must give way to all other vehicles except those controlled by a Stop sign





What stays the same?

- If you are turning, give way to all vehicles not turning
- If the road is marked with a centre line, you are deemed to be turning if you leave the path of the centre line. If you follow the path of the centre line, you are deemed to be not turning





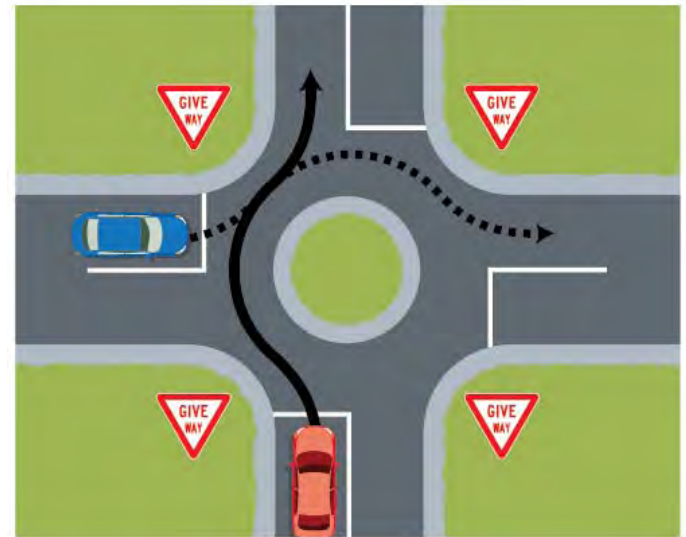
What stays the same?

- If all the rules stated in this presentation do not determine who gives way, you give way to vehicles coming from your right



Roundabouts

- **Will there be any changes to the give way rules at roundabouts?**
- No. On a roundabout you should continue to give way to vehicles coming from your right.





When will the public
awareness campaign begin?



Timing

- The public awareness campaign will start at the end of February and intensify when national advertising runs from 15 March to 1 April
- This late start date is necessary to minimise the risk of people starting to use the new rules too early



How will the new give way
rules be promoted?



www.giveaway.govt.nz 29 Feb

- Online video showing the new rules from two perspectives
- Online quiz for interactive testing of give way knowledge
- Leaflets for download in multiple languages





Other communications

- 500,000 leaflets circulated via Driver Licensing Agents, Police, Councils etc
- Articles in stakeholder publications
- Media campaign
- Resources for deaf, blind and partially sighted road users



Advertising

- National advertising – TV, radio, newspapers, online, Google search
- Household leaflet drop – 1.7 million homes



www.giveway.govt.nz

Until 5am on Sunday 25
March the current give way
rules apply.