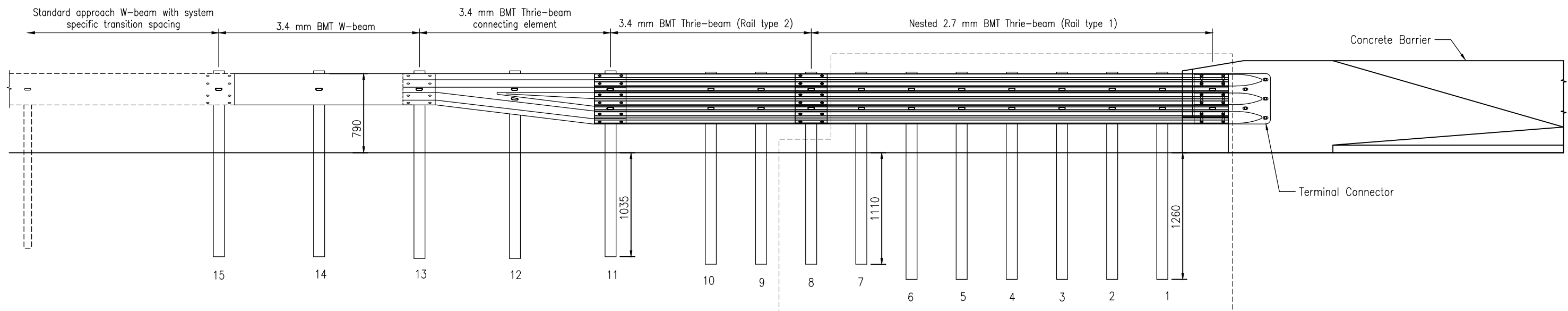


PLAN



ELEVATION
NTS

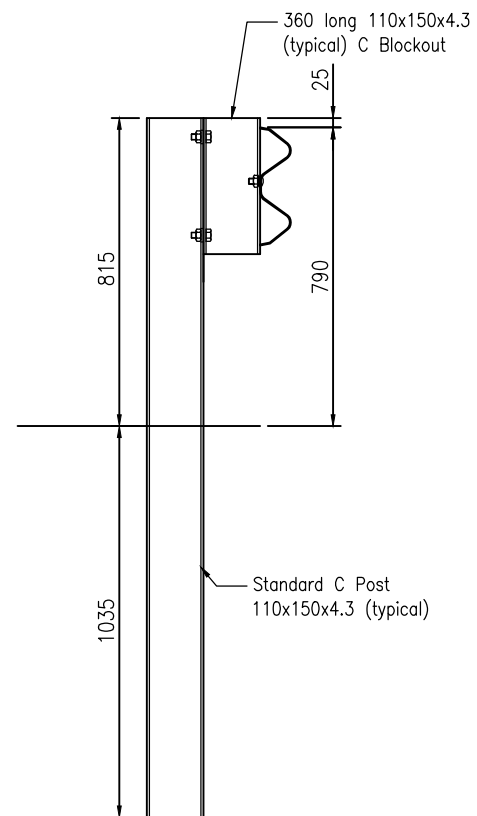
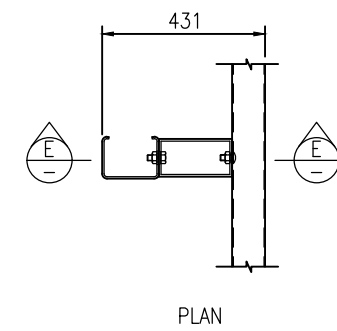
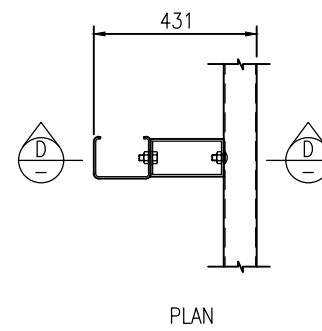
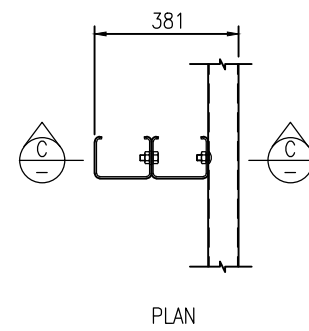
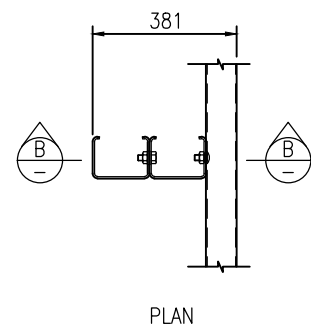
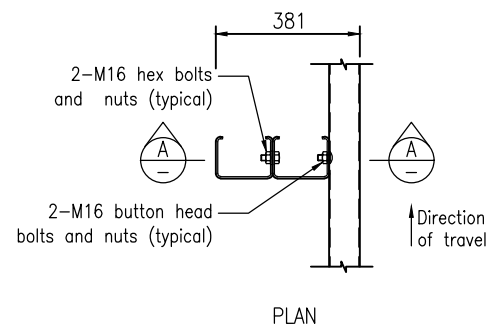
Refer to note 8 on sheet 8

No.	Revision	Date	Accepted	Date
			JC	03/2022
			JH	03/2022
1	ORIGINAL ISSUE	03/22		

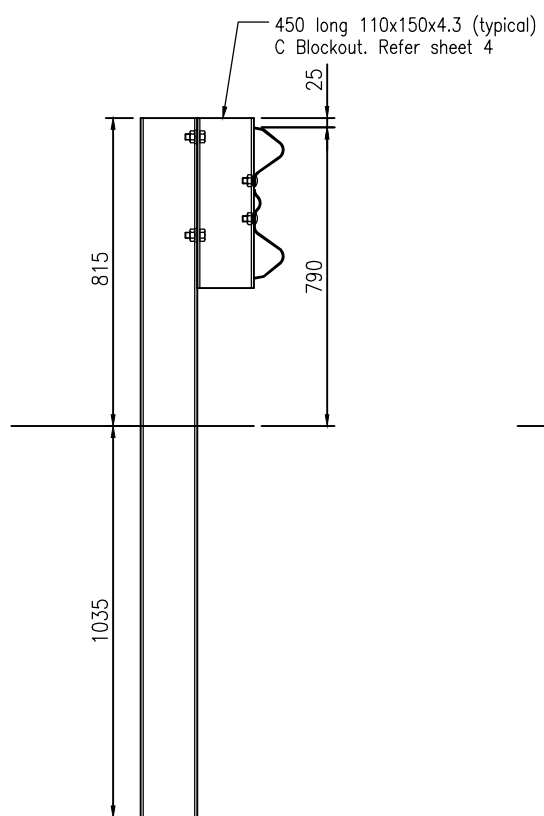


Series	Road Safety Barrier
Title	W-beam to Rigid Concrete Transition MASH TL-3

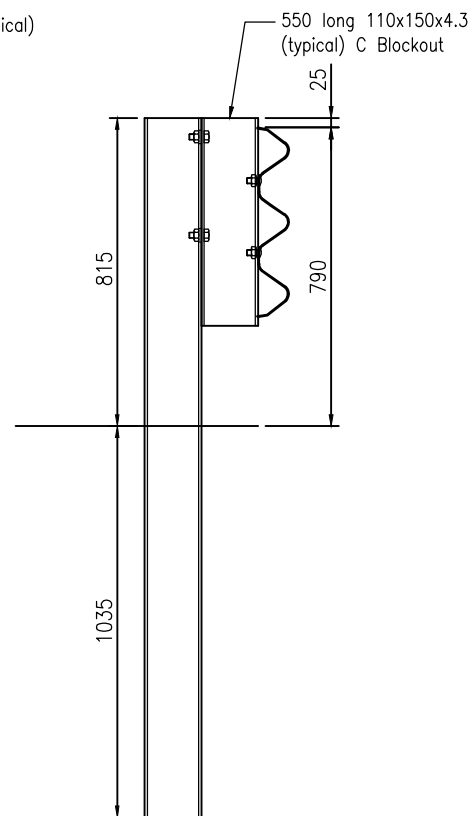
Ref./Number	RSB-5M
Sheet	Sheet 1 of 8
Rev.	1



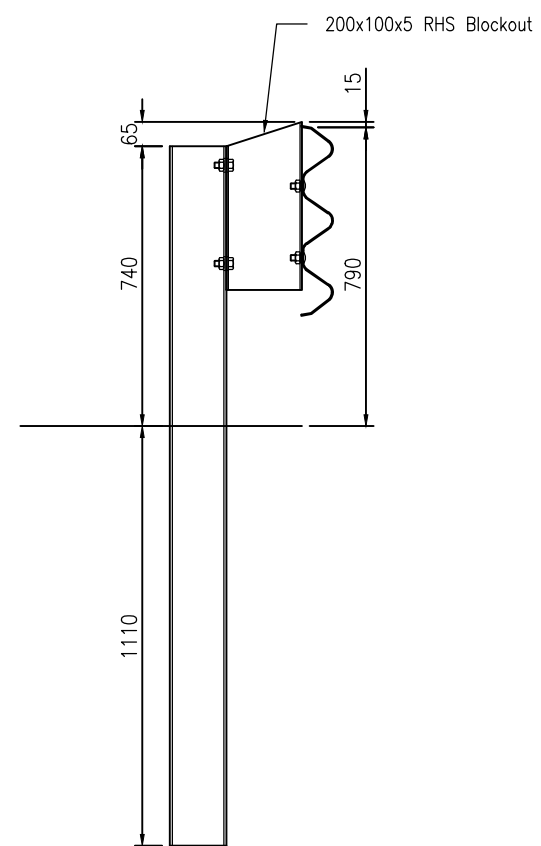
SECTION A
POSTS 13-15
NTS



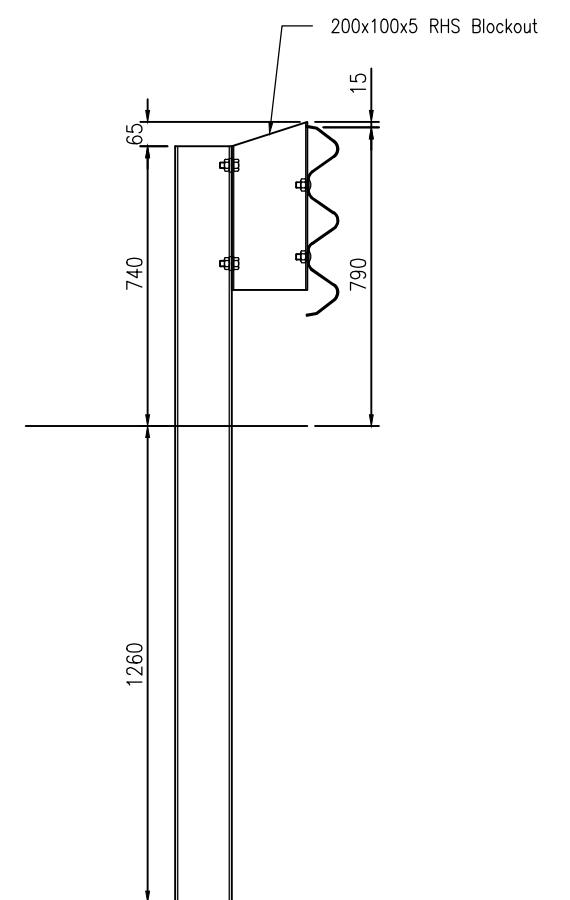
SECTION B
POST 12
NTS



SECTION C
POST 11
NTS



SECTION D
POSTS 7-10
NTS



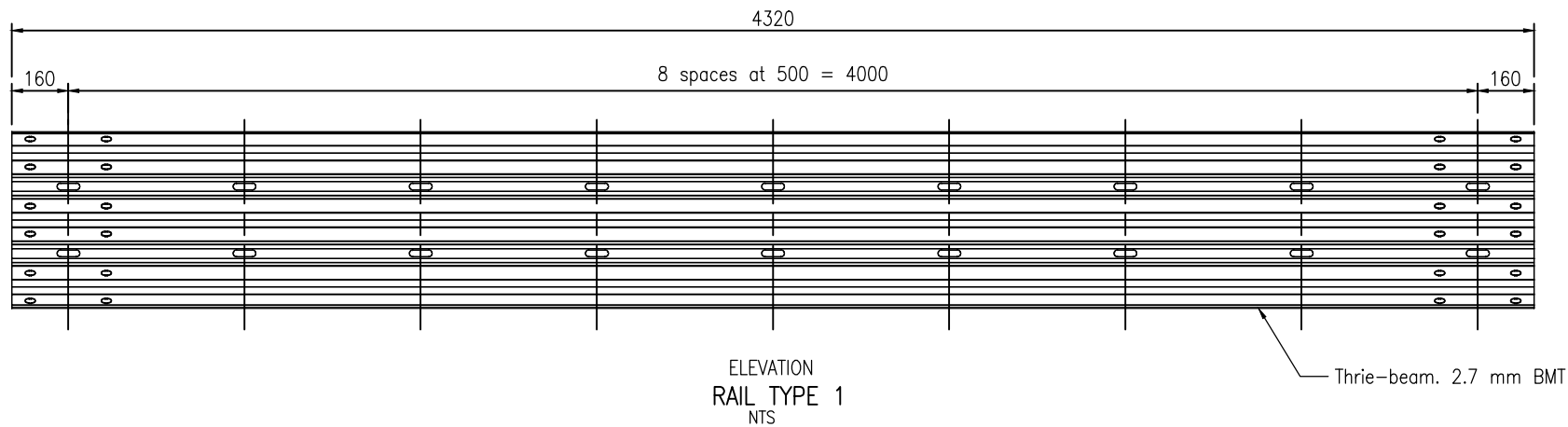
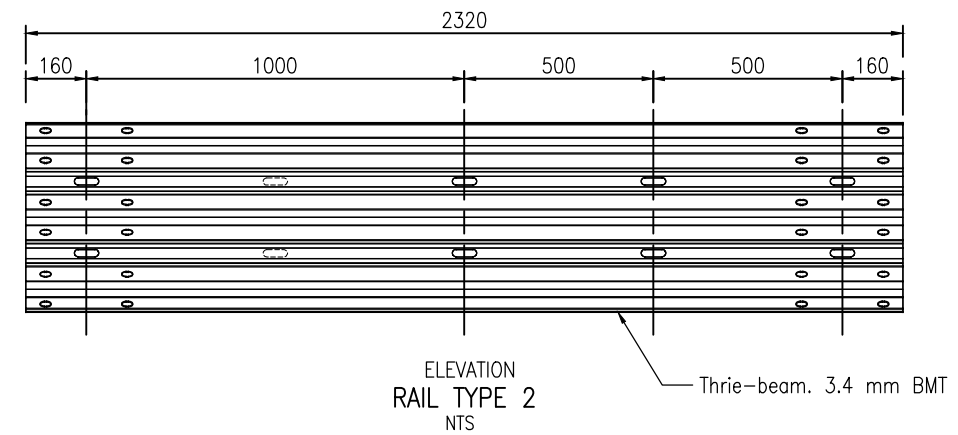
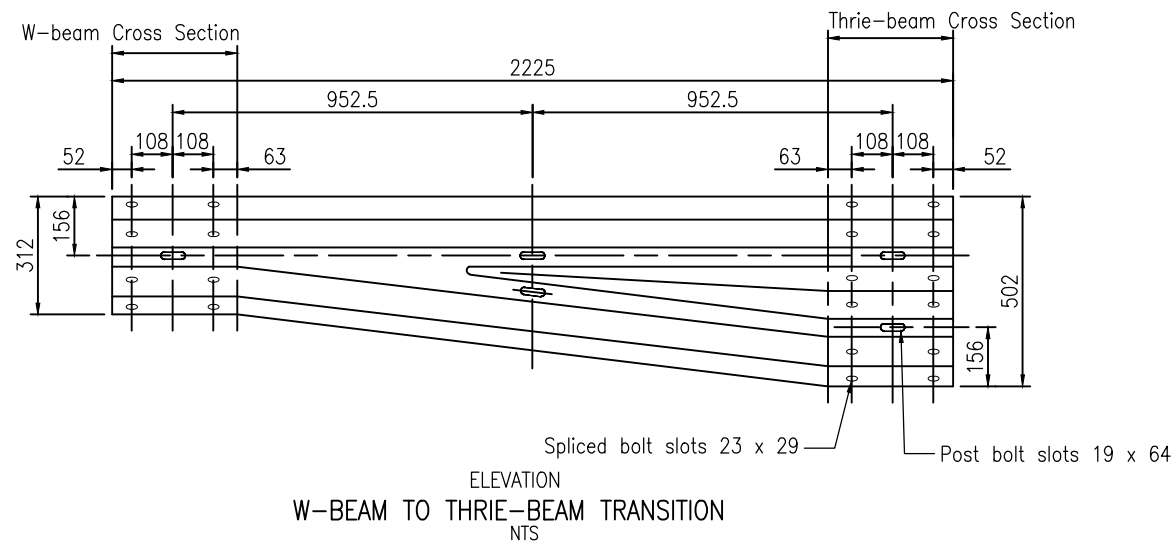
SECTION E
POSTS 1-6
NTS

No.	Revision	Date	Accepted	Date
			JC	03/2022
			JH	03/2022
1	ORIGINAL ISSUE	03/22		

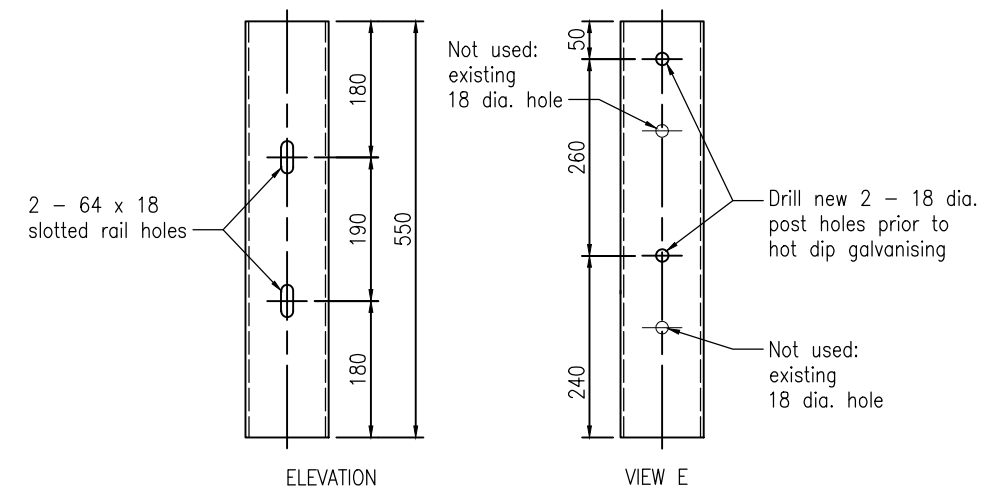
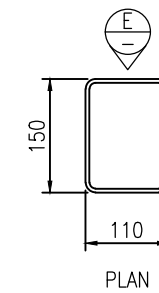
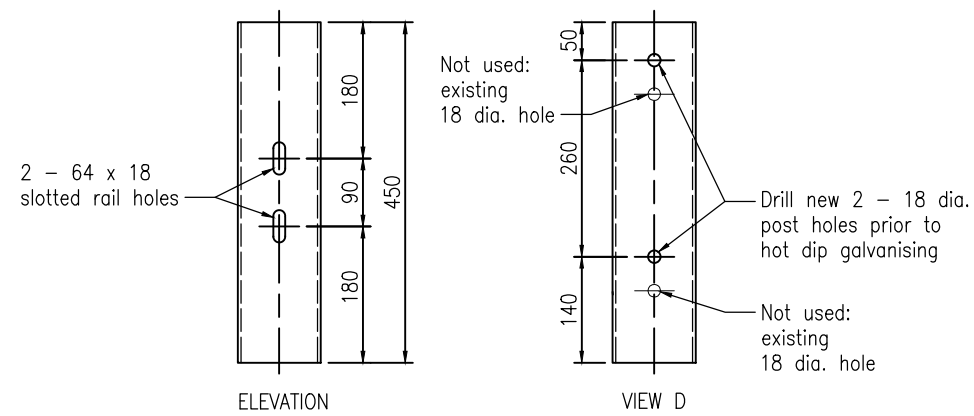
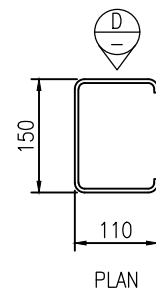
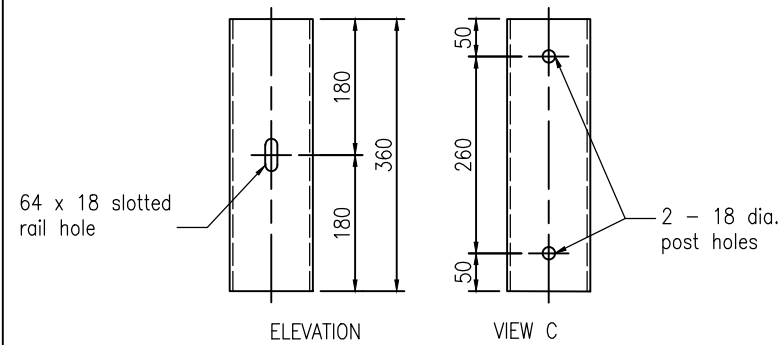
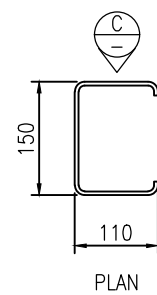
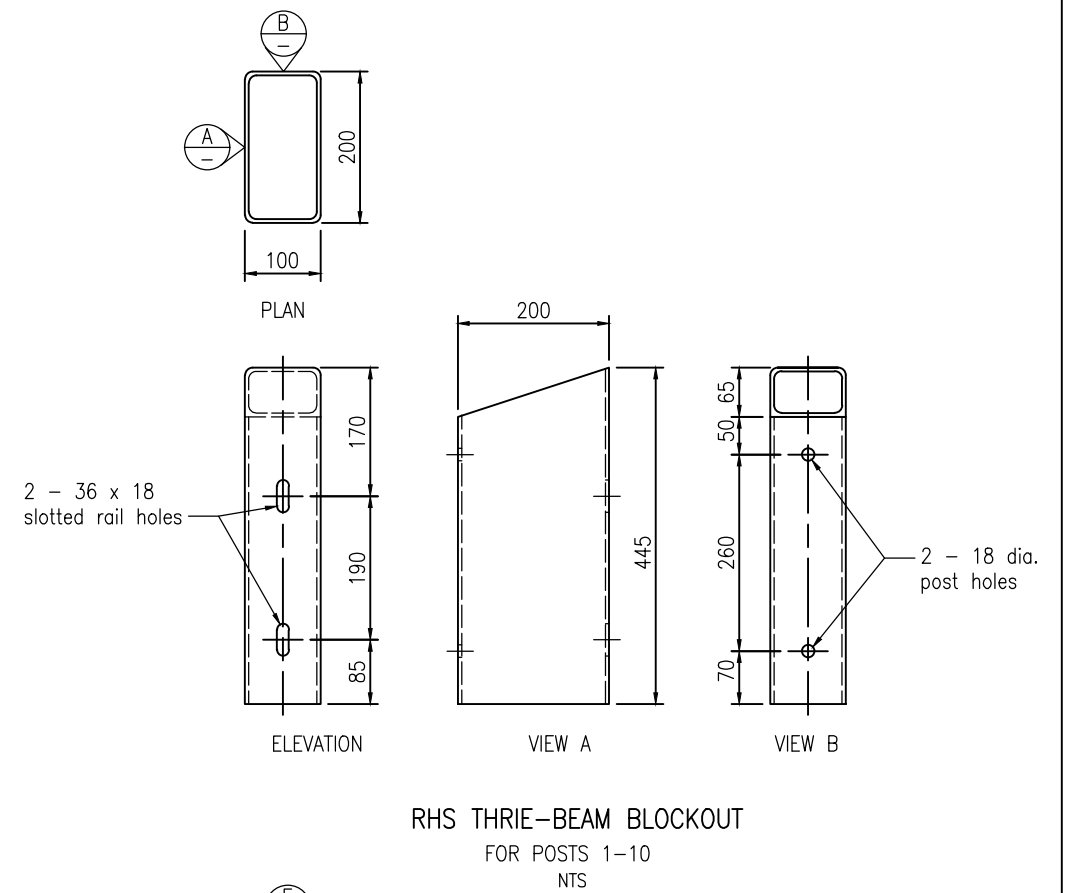
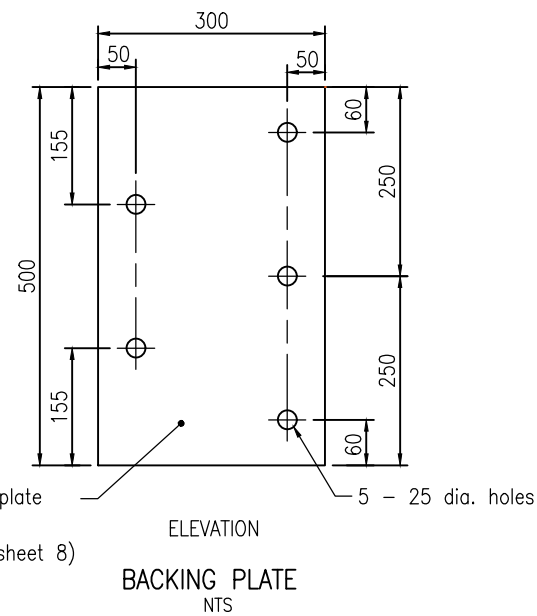
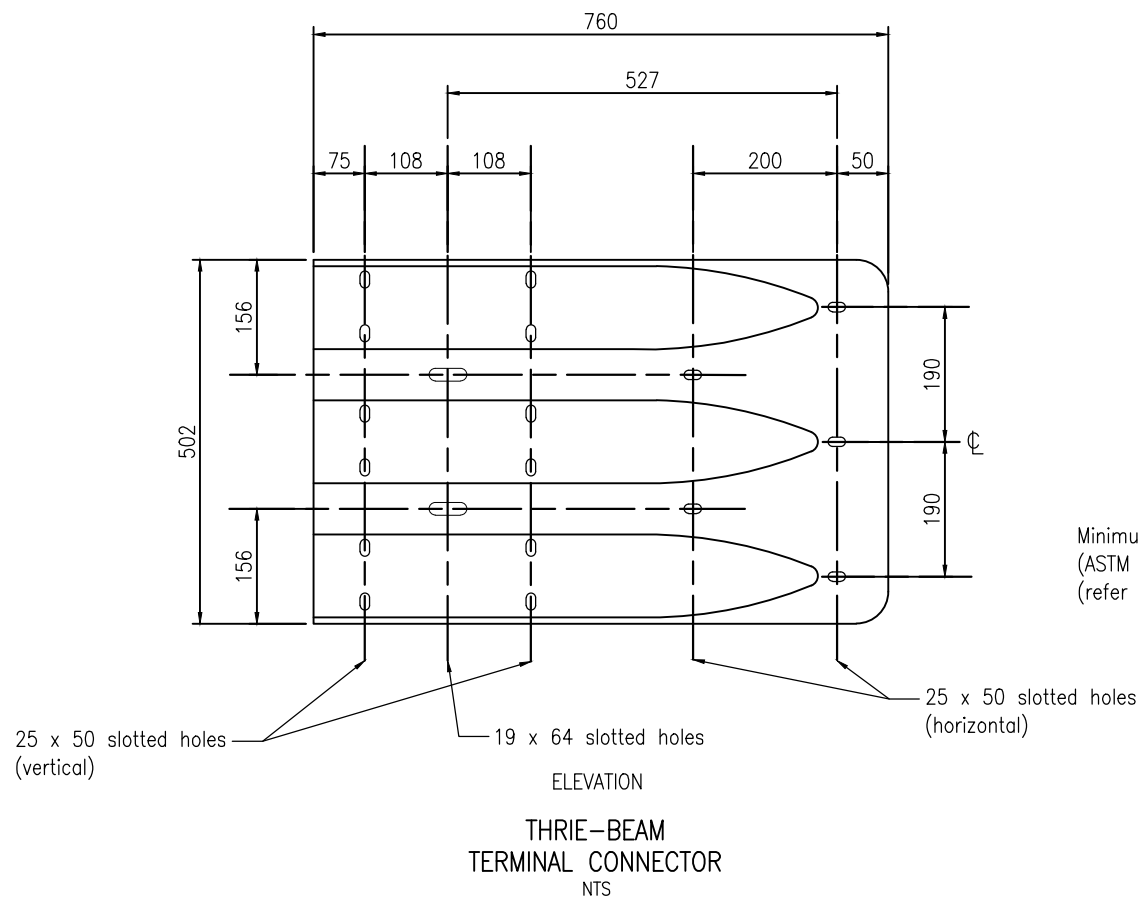


Series	Road Safety Barrier
Title	W-beam to Rigid Concrete Transition MASH TL-3

Ref./Number	RSB-5M	
Sheet	Sheet 2 of 8	Rev. 1



No.	Revision	Date	Accepted	Date	 Standard Detail	Series	Road Safety Barrier	Ref./Number	RSB-5M
			JC	03/2022		Title	W-beam to Rigid Concrete Transition MASH TL-3	Sheet	
			Endorsed	Date				Rev.	1
			JH	03/2022					
1	ORIGINAL ISSUE	03/22							

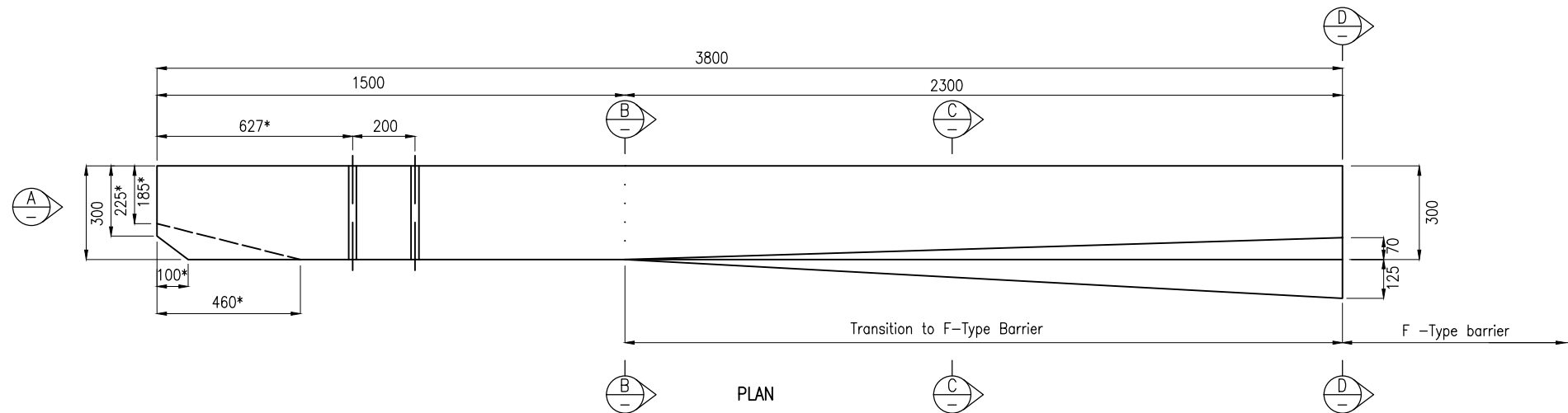
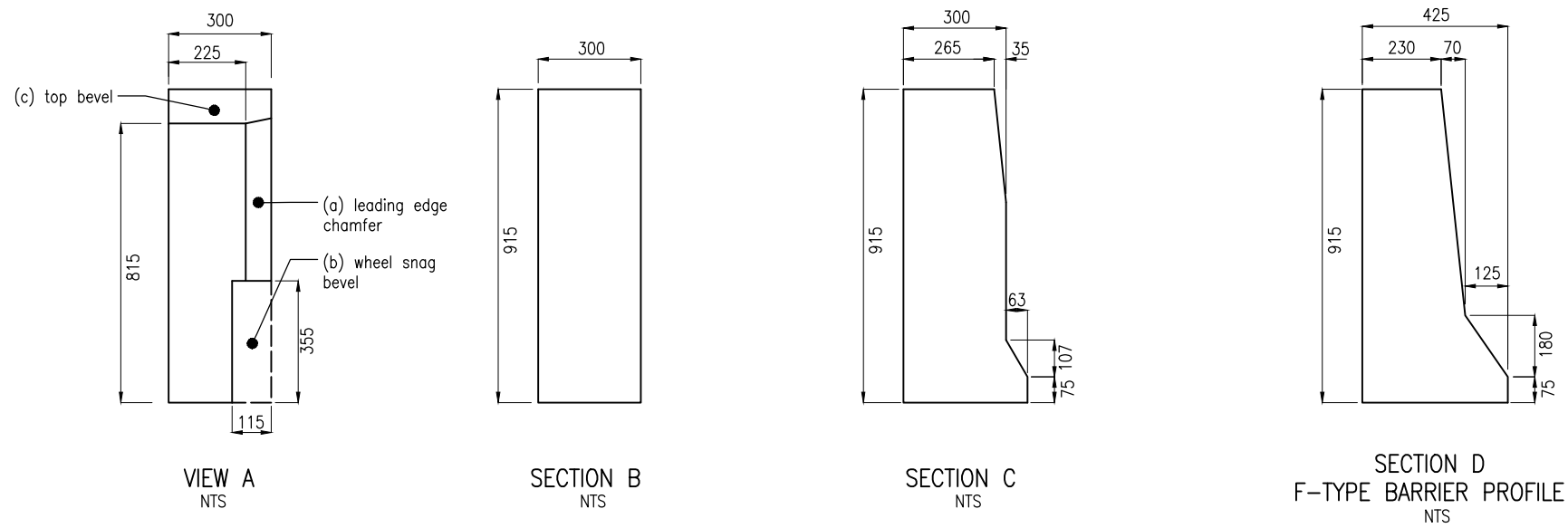


No.	Revision	Date	Accepted	Date
			JC	03/2022
			JH	03/2022
1	ORIGINAL ISSUE	03/22		



Series	Road Safety Barrier
Title	W-beam to Rigid Concrete Transition MASH TL-3

Ref./Number	RSB-5M
Sheet	Sheet 4 of 8
Rev.	1

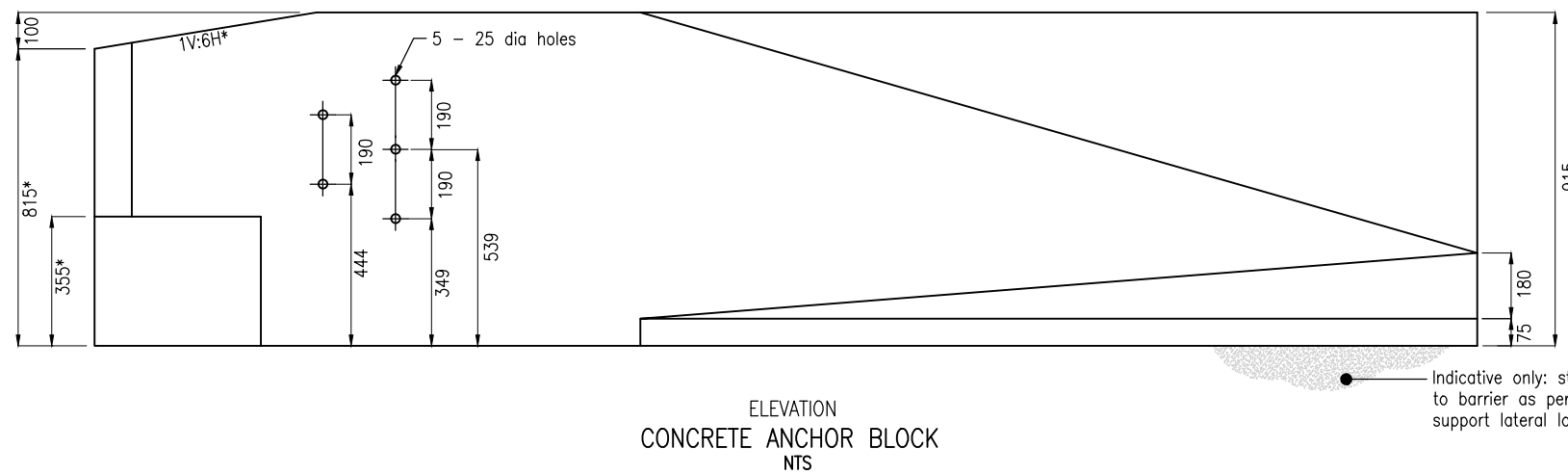


CRITICAL DIMENSIONS

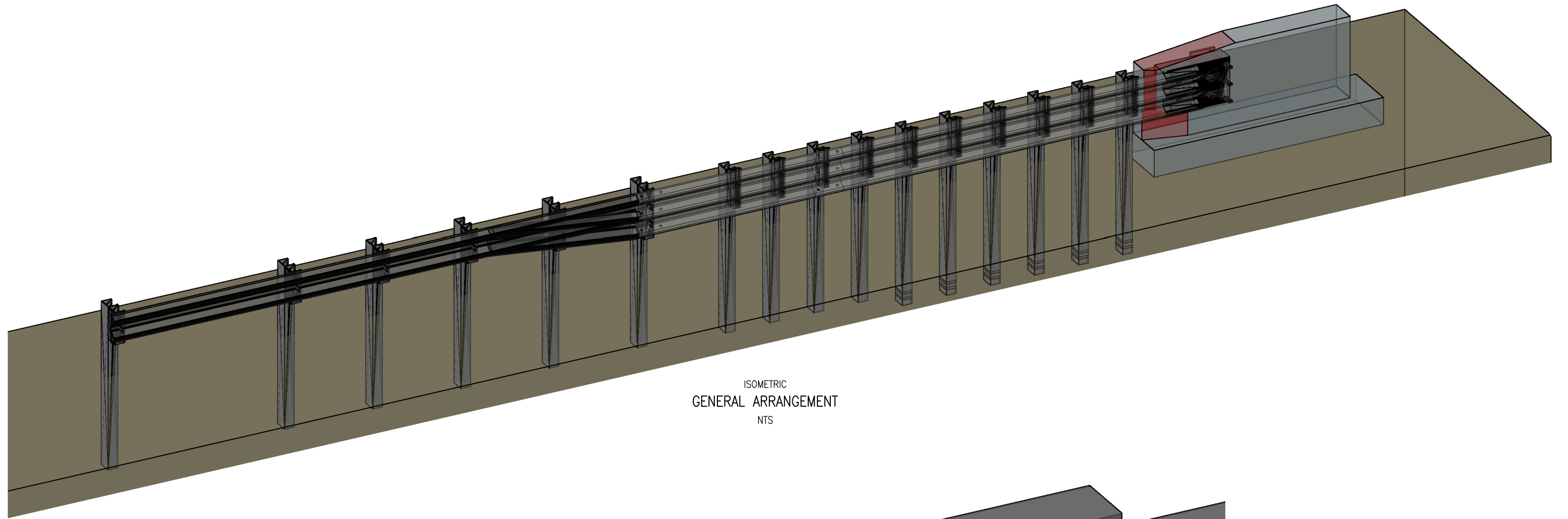
(not to be modified)

- (a) - leading edge chamfer
- (b) - wheel snag bevel
- (c) - top bevel

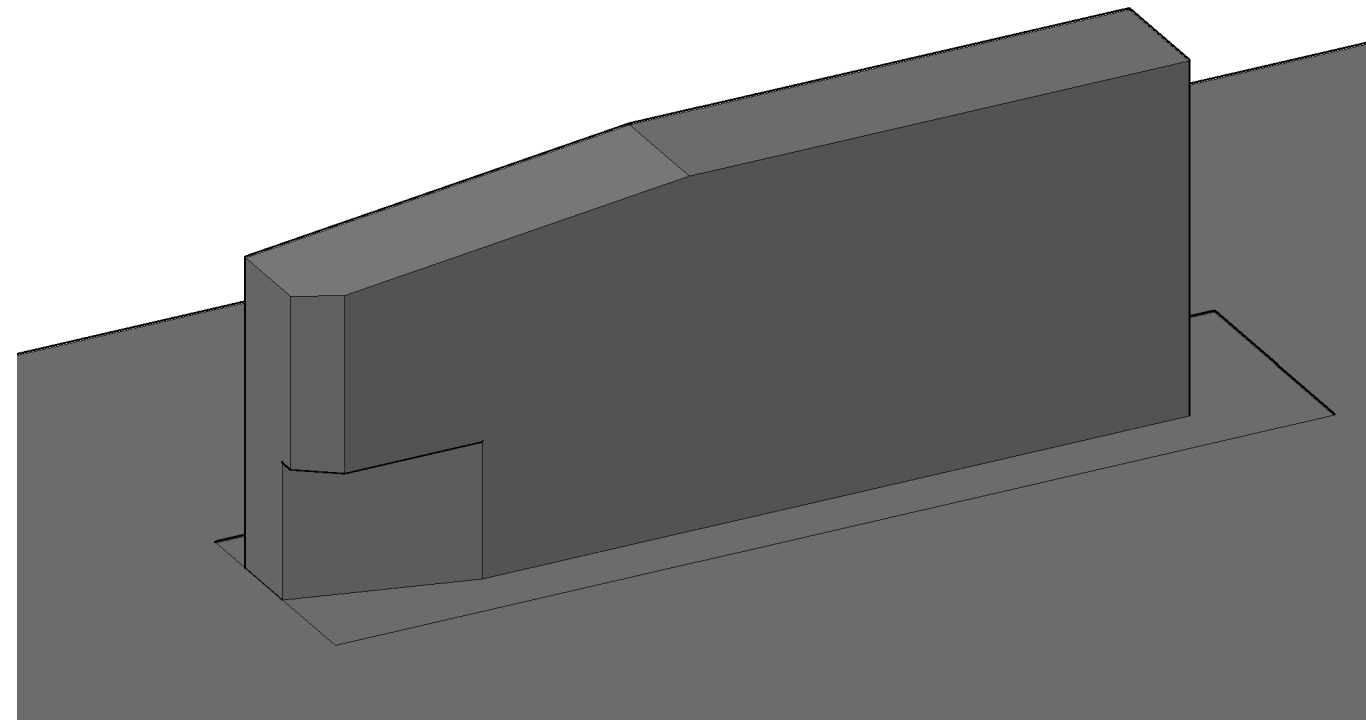
*Critical dimensions shown with an asterisk



No.	Revision	Date	Accepted JC	Date 03/2022		Series Road Safety Barrier	Ref./Number RSB-5M
			Endorsed JH	Date 03/2022		Title W-beam to Rigid Concrete Transition MASH TL-3	
1	ORIGINAL ISSUE	03/22			Standard Detail		Sheet Sheet 5 of 8
							Rev. 1

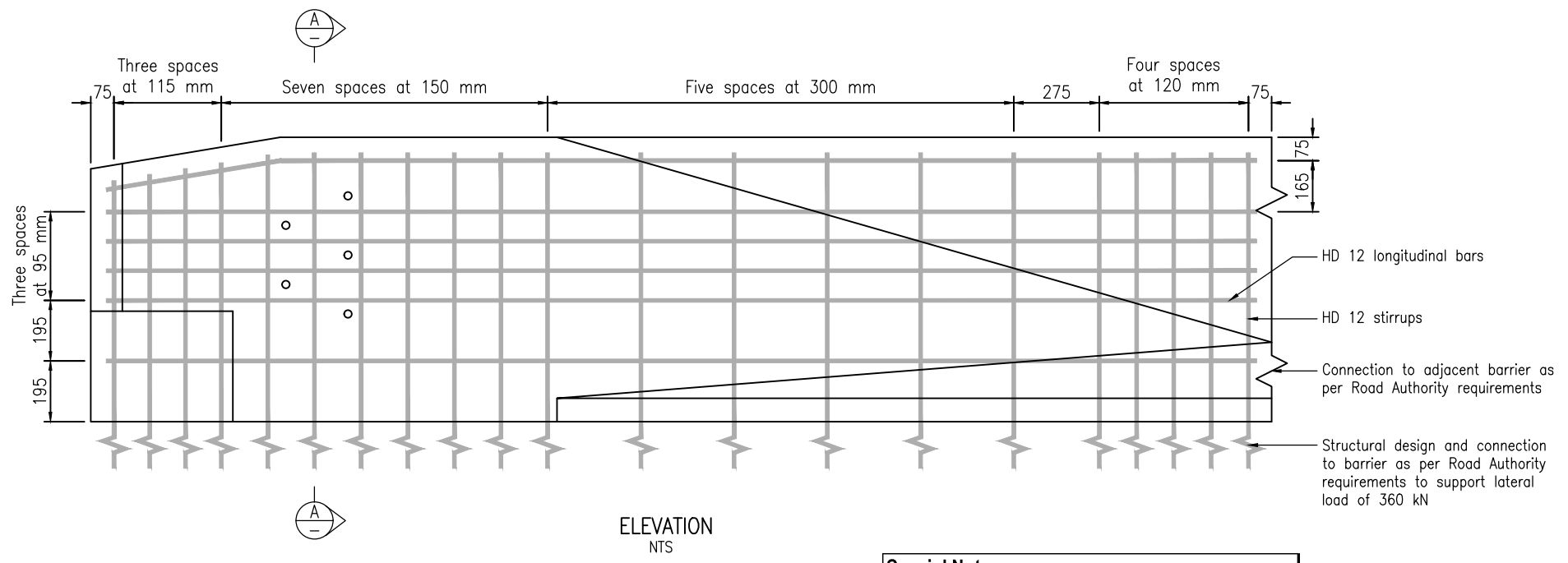
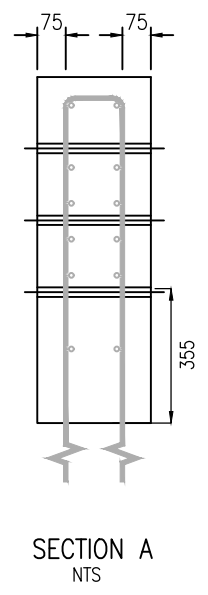


ISOMETRIC
GENERAL ARRANGEMENT
NTS




ISOMETRIC
CONCRETE ANCHOR BLOCK
NTS

No.	Revision	Date	Accepted JC	Date 03/2022	 Standard Detail	Series	Road Safety Barrier	Ref./Number	
			Endorsed JH	Date 03/2022		Title	W-beam to Rigid Concrete Transition MASH TL-3	RSB-5M	
1	ORIGINAL ISSUE	03/22						Sheet	Rev.
								Sheet 6 of 8	1




Special Note
Structural design is indicative only - to be confirmed by Road Authority or Installation Designer

No.	Revision	Date	Accepted JC	Date 03/2022	 <p>Standard Detail</p>	Series Road Safety Barrier	Ref./Number RSB-5M	
			Endorsed JH	Date 03/2022		Title W-beam to Rigid Concrete Transition MASH TL-3		
1	ORIGINAL ISSUE	03/22					Sheet Sheet 7 of 8	Rev. 1

Item	Quantity	Dimensions	Location	AASHTO Reference	Notes
Long C post	6	2000 long, 110 x 150 x 4.3 (typical)	Posts 1-6		Bolt holes on both faces
Standard C post	9	1850 long, 110 x 150 x 4.3 (typical)	Posts 7-15		Bolt holes on both faces
W-beam rail	1				Half-length rail, 3.4 mm BMT
W-beam to Thrie-beam transition	1			RWT 02a-b	Opposite asymmetry required for trailing installation
Thrie-beam rail type 1	2			RTM08a-b	Nested
Thrie-beam rail type 2	1				
Thrie-beam terminal connector	1			RT E01b	Otherwise known as structure connector
Backing plate	1			FPB07	May be replaced by an accepted alternative, such as 80 x 80 x 6 mm washers
RHS blockout	10	200 x 100 x 5	Posts 1-10		Grade 350
Transition Thrie-beam C blockout	1	550 long, 110 x 150 x 4.3 (typical)	Post 11		Grade HA300
Modified Thrie-beam C blockout	1	450 long, 110 x 150 x 4.3 (typical)	Post 12		Drill additional holes, refer to sheet 4. Grade HA300
Standard W-beam C blockout	3	360 long, 110 x 150 x 4.3 (typical)	Posts 13-15		Grade HA300
M16 button head bolt & oversized nut	44	M16 x 32	Rail splices	FBB01-05	Grade 8.8
M16 button head bolt & nut	27	M16 x 50	Rails to posts		Grade 4.6
M16 hex head bolt & nut	30	M16 x 30	Posts to blockouts		Grade 4.6
M24 hex-head terminal connector bolt, with nut and washer	5	350 long (nominal)	Structure connector		Grade 8.8 May be substituted for grade 8.8 threaded rod cut to length (no protrusion >25 mm on barrier face and at least two threads protruding beyond the nut, cut surface to be treated with two coats of zinc rich paint)

General Notes

- All work to be as per Road Authority specifications.
- All dimensions in millimetres unless noted otherwise.
- Drawings are not to scale and some non-critical dimensions have been rounded to the nearest 5 mm or nearest 10 mm. Tolerances are as per AS/NZS 3845.1.
- Posts to be stamped with identification e.g. length (2000/1850) or post location (posts 1-6/posts 7-13).
- Concrete barriers shall be as per Waka Kotahi NZTA Specification M23.
- Upstream rail sections should overlap downstream rail sections, with respect to the nearest travel dimension.
- Structure connector backing plate may be replaced by an accepted alternative such as five 80 x 80 x 6 mm washers.
- Trailing concrete transitions installed on roads divided by median barrier may have the entire nested section with posts 1 through 8 omitted.

No.	Revision	Date	Accepted JC	Date 03/2022	 Standard Detail	Series Road Safety Barrier	Ref./Number RSB-5M
			Endorsed JH	Date 03/2022		Title W-beam to Rigid Concrete Transition MASH TL-3	
1	ORIGINAL ISSUE	03/22				Sheet Sheet 8 of 8	Rev. 1